

GOWRIE NSW ERSKINEVILLE NEWSLETTER

ISSUE: TERM 3 2023



Gowrie NSW Erskineville

Outside School Hours & Vacation Care

7am to 8.30am & 3pm to 6pm,
Monday to Friday
7am to 6pm (Vacation Care)

A Erskineville Public School
Malcolm St (Enter through Bridge St),
Erskineville NSW 2043

M 0402 021 613

E erskinevilleoshc@gowriensw.com.au

W www.gowriensw.com.au

REMEMBRANCE DAY AT GOWRIE

As a part of observing the Remembrance Day in Gowrie Erko OSHC, we thought we would reach out to our wonderful community by inviting a family affiliated with the Defense Forces to share their experiences in our Yarning Circle.

So, on a sunny Wednesday morning, we were honored to welcome Mr. Stephen Davies-Griffith. He explained the significance of Remembrance Day, provided insights into his role in the Royal Australian Navy, and underscored the global importance of safeguarding freedom.

Mr. Davies-Griffith responded to the children's inquiries with remarkable openness and honesty, conveying the challenges of being separated from his family for extended periods, sometimes up to 12 months. Despite this, he expressed immense pride in contributing to training new Army recruits. He elaborated on the specific ships and equipment he works with, reassuring the children that Australia is a secure and well-protected nation.

In celebrating our diverse and caring community, we take pride in being part of such impactful experiences.

FIND OUT MORE

To view our programs, make an online booking, or to find out more, please visit our website or scan the QR code below:

<https://www.gowriensw.com.au/out-of-hours-care/erskineville>



Visits to our program are always welcome and can be arranged by calling the Program Manager or emailing the centre.

We would love to hear from our families, if you wish to provide feedback, or if our have questions, comments or concerns, please feel free to contact the centre via email, in person or phone.

Our current team now consists of:

PERMANENT EDUCATORS

Joel

Program Manager

Claire

Assistant Program Manager & Compliance Officer

Edyta

Assistant Program Manager & Inclusion Support Lead

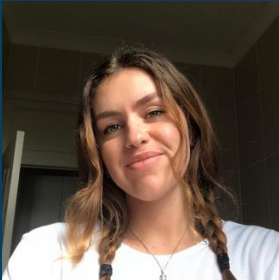
Kelly, Alice, Stephanie, Miya Jose, Juan, Moira, Harry

Educator

CASUAL EDUCATORS

Alex, Ella, Brigid

This month's featured educator



Alice

"For her outstanding work in preparation for the new Kindy transition. From giving a feedback to the Management Team, sharing her insight into Junior Hall needs to preparing resources for new families, visiting nearby Gowrie Childcare and participating in open school days for our newest students – she done it all!

SERVICE UPDATES

2024 waitlist update:

Many families that have been on our waitlist from 2022-2023 have now been offered positions for the next year. If you still require places please get in contact with the service asap before our 2024 places will be filled up. If you have children starting Kindergarten next year please be ensure you are on our waitlist for 2024.



Seasonal Menu update:

With the beginning of November, we are reaching the new season in the D'harawal calendar - Time of Parra'dowee. This season will last November and December, described as Goray'murra: warm and wet weather.

The season begins with the Great Eel Spirit calling his children to him, and the eels, which are ready to mate, make their way down the rivers and creeks to the ocean. It is the time of the blooming of the Kai'arrewan (Acacia binervia), which announces the occurrence of fish in the bays and estuaries.

Our revamped menu includes suggestions from children and families, returns of some of Gowrie's favorites and an extended breakfast menu.

Gowrie ERKO SEASONAL MENU
Goray'murra—Warm and wet

Afternoon Tea - Snacks	Sushi bowls Steamed rice served with seaweed wraps, shredded carrot and cucumber and kewpie mayo or soy sauce to taste. DF, GF, EF & VEGAN Options Available	Breakfast - Snacks	Fruit Smoothie Selection of frozen fruits (strawberries, mango, passionfruit) perfectly blended with milk and yogurt. DF, GF, EF & VEGAN Options Available
	Yoghurt cones Waffle cones served with a choice of Vanilla or Strawberry yoghurt and topped with a choice of frozen fruit (mango, dragon fruit, passionfruit). DF, GF, EF & VEGAN Options Available		Pancakes Hand-made pancakes, with honey, maple syrup, jam, lemon and sugar DF, GF, EF & VEGAN Options Available
	Bowrie's Famous Maccheese Elbow pasta mixed with cream cheese, pure cream, cheddar, garlic, salt, pepper DF, GF & VEGAN Options Available		Cheesy Toastie Breakfast classic: wholemeal bread toasted with cheddar (Vegemite optional) DF, GF, EF & VEGAN Options Available
	Tortilla wraps Wholemeal tortilla served with filling of choice: shredded chicken breast, cheddar, iceberg lettuce, cucumber, carrot DF, GF & VEGAN Options Available		Crepes Thin and light crepes served with freshly whipped cream and strawberry jam DF, GF, EF & VEGAN Options Available
	Corn nachos with salsa Crunchy corn nachos with a side of chunky tomato salsa and cheddar DF, GF, EF & VEGAN Options Available		Raisin toasts Wholemeal raising toasts with butter DF, GF, EF & VEGAN Options Available
		Fruit and Vegetables	The Fruit Village - Erskineville Each week, children collect fruit and Vegetables from the Erskineville Fruit Village on a Monday morning. We're provided with seasonal fruit options that are served each afternoon alongside the Afternoon Tea Snack.

The Gowrie ERKO OSHC community pays respect to the Gadigal People of the Eora Nation, and acknowledges them as the traditional custodians of this land, and pays tribute to elders past, present and emerging. Our program additionally recognizes, and thanks the D'harawal people, for sharing their wisdom and knowledge that guides our program's menu planning today.