



ERSKINEVILLE PUBLIC SCHOOL

Malcolm Street, Erskineville NSW 2043

T 02 9557 5206 F 02 9550 4593

E [erskinevil-p.school@det.nsw.edu.au](mailto:erskinevil-p.school@det.nsw.edu.au)

# Newsletter

YOUR COMMUNITY SCHOOL FOR THE FUTURE

Thursday 18 May \_ TERM 2 WEEK 4\_ 2023

## DATES FOR YOUR DIARY 2023

### Term 2

#### Wednesday 17th May

P & C Meeting\_6.45pm School Library

#### Sunday 28th May

Working Bee

#### Wednesday 24th May

Simultaneous Story time\_ Sleepy sloth

#### Wednesday 21 June

P & C Meeting\_6.45pm\_Zoom

**More to Come!!**



## Principal Communication

**Attendance – unexplained absences:** Please be aware that if your child is absent for whatever reason, a note must be provided to justify the absence. This does not include students who are involved in school approved activities where they are off site. Any periods of extended leave (such as for travel) must be applied for to the school under the department's guidelines.

**Readers returned:** Just a reminder that we still have many readers and books that have not been returned to school. Our books and readers are a core component of our English programs, our readers particularly as they are levelled and fit a sequence of learning that often provide the basis for later books in the series. They ensure a continuity of reading instruction and cover the reading development of a student.

**Tell Them From Me:** In a few weeks we will be taking part in the TTFM surveys for students, staff and parents. I'd encourage you to be involved and participate as the more of our community that do so the more accurate the data we collect from the surveys. There is no obligation to participate but if you decide to withdraw or not participate it is important that we are aware. May 26 is the deadline to do so.

**Buddy classes:** This week we continue our buddy class programs with a focus on the Erko school value of Respect. Buddy classes / peer support initiatives run alternately to assemblies.

**Bridge street works:** So far there seems to have been a smooth transition to the pedestrian and traffic changes brought about by the closure of Bridge St. If there are issues that need to be addressed, please contact the front office as I am in communication with council regarding the implementation of these changes. Thank you to everyone for their patience whilst this works continues.

**Assemblies -** a reminder that our next assemblies are our regular school assembly in week 5 (May 26th) and for reconciliation week the following week (June 2nd). Assemblies begin after 2 p.m. unless otherwise advised in the Lucy Woodcock Hall (LWH). Parents are always welcome to attend.

**Changes to personal details –** If you have any change to your personal details, please let the office know. This includes change of address, emergency contacts, phone numbers, medications or health conditions.



## WELLBEING AT ERKO

This term we are focusing on our value of Respect. Having respect in school environments helps to develop our school culture and it provides a sense of wellbeing, belonging and inclusiveness. This learning will be embedded in our Buddy lessons that are starting this week. Teachers have collaborated during staff meetings to produce this series of engaging lessons that will best support the needs of all the children at Erko.

During buddy lessons, children will have a chance to practise being respectful through modelling, roleplays and discussion. Teachers have also been speaking to their classes about respect and there has been a whole school effort to show respect at our events, such as assemblies. You could also take this opportunity to speak to your child about what respect looks like in your home environment. If you would like some advice or direction about the points you could raise with your child, you could follow this helpful link:

<https://www.respect.gov.au/respectful-relationships-start-at-home/>

### NIT ALERT!

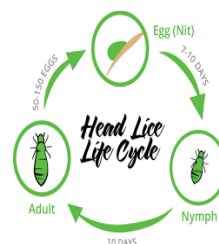
Head lice are very common so there is no need to be alarmed.

As children get their heads together, just one infested head can infest a whole class.

We all need to act together if we don't want uninvited guests coming home for a sleepover.

For more information on treatments available:

<http://www.health.nsw.gov.au/environment/headlice/pages/default.aspx>







## Erko Cross Country



On the 5th of May, Erko students went to Sydney park to compete in the annual Cross Country Carnival. Parkes won on 240 points with Ingram 12 points behind on 228. Knight came 3rd with 223 points and Cusack 4th on 200. We all agreed that it was a very close competition, with lots of team spirit and chanting for their houses.

**Hot off the press** Wednesday this week zone cross country saw a fantastic effort from all representing Erko with Ella, placing 1st, Myles 2nd, Dali , Olivier, Briella 4th, Clara, Laurence 5th. Congratulation to all, now its off to Regionals!







## Hatch & Grow

### Ducking's time with Kindy



We have been having an eggciting time in Kindergarten! Each class received a special delivery of an incubator with twelve duck eggs. Over the next few days the ducklings began to 'pip' their shell with their egg tooth. We watched closely as they wriggled, rolled and cracked open. Some of us were lucky enough to see one hatch! This last week we observed our ducklings getting bigger and stronger. They grow extremely quickly and are very fast learners! They can waddle from the moment they are born and we were amazed that they didn't need any swimming lessons!

We have enjoyed learning about their features, life cycle and habitat as well as how to take care of them. We will miss our fluffy, quacking friends.







## Hatch & Grow

## Ducking's time with Kindy







## Music Program



This term in Music, Stage 1 are learning to play the ukulele, and they are very excited to finally get their hands on the ukuleles! We've started by learning the basics and we have already mastered 2 chords- the C major chord & the A minor chord. We will learn to play these chords, and more, in simple chord sequences while playing simple strumming patterns.

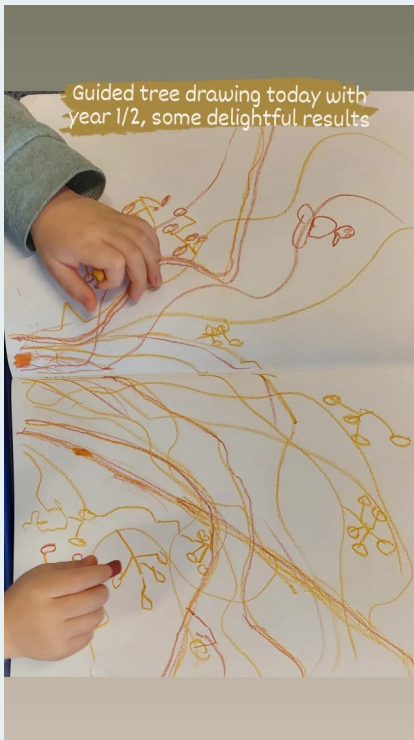
**Micaela Cecire**  
Music Teacher & Band Co-ordinator







## Guided tree drawing stage 1 Beat Around The Bush



**Art with Ms Stein**







## Merit Assembly

This week, we would like to congratulate:



Early Stage 1: Pina, Clara, George, Gigi, Leo, & Frankie



Stage 1: , Audrey, Freddie, Miles, Remy, Anika, Valo, Persie, Riley, Maksim, Innes, Abbie, & Emer-



Stage 2: Io, Eva, Hugo, Adele, Will & Jackson



Stage 3: Bailey , Aiden, Gordon , Henry, Sam, Skye & Jordan



Class of the week: Wattle



Student of the week : James, Liam, Jolly & Duncan





## Snow Australia

**"Snow Australia are holding the Interschools Sydney Regional Snowsports Championships at Thredbo in the next school holidays from 10-14 July.**

**The Interschools Snowsport Championships is a series of Snowsports competitions where students compete for their school as part of a team or as an individual in any of our nine ski and snowboard discipline events.**

**School students from all ability levels are encouraged to enter, with an emphasis on fun and participation in the initial Regional Championships. As the competitions move into the State and Australian Championships, the level of competition and the degree of difficulty increases.**

**Entries are open now. Please contact the parent coordinator, Jacinta, on 0433 732 742 if you are interested in participating or would like more information."**



School term	NSW student school term dates
Term 1 2023 NSW	Tuesday 31 January 2023 - Thursday 6 April 2023
Term 2 2023 NSW	Wednesday 26 April 2023 - Friday 30 June 2023
Term 3 2023 NSW	Tuesday 18 July 2023 - Friday 22 September 2023
Term 4 2023 NSW	Monday 9 October 2023 - Tuesday 15 December 2023





## Playground Safety correct use of Equipment



Dear Parents and Families,

Students continue to have fun on the climbing equipment that has been provided by the P&C. At the beginning of each year, and throughout the year, students are shown a slide presentation of the rules of the climbing equipment. Images, along with the 'Dos and Don'ts' of the climbing frame provide clear instructions for students to help them remain safe. When these are not adhered to, students may be requested to leave the climbing equipment and sit out of play for their own, and others', safety.

The rules for the use of the equipment are summarised here:

- We need to remember to walk around the dome so that we don't trip over the wooden frame.
- We need to climb sensibly. This means we always have at least one foot and one hand on the climbing frame at all times.
- We must stay inside the silver metal frame. It is **very unsafe** to climb over the outside or top of the silver frame.
- We need to use the blue slide safely.  
This means:
  - One person at a time.
  - Sit on your bottom and go feet first.
- We need to use the swinging chair safely. This means:
  - One person goes on the chair at a time
  - We take turns so nobody misses out
- We must keep our hands, feet, and objects to ourselves.
- Games involving tips or pushing are not safe games to play on the dome. You can play tips in the rest of the playground spaces.
- When we want to get down, we climb.
- We do not jump from the dome.

**If everyone follows these rules, everyone will be safer.**





## Knitting club

Wednesday 11.30

Learn French Knitting ( BYO paper towel cylinder) or knitting with needles.

Bring gold coin if you're interested in taking wool and needles home once you have learnt !

With Ms Stein years 3 – 6

All Welcome



# ERKO UKULELE ENSEMBLE



Erko Ukulele Ensemble is back for 2023!

**Who: Year 2-6**

**When: Monday lunchtime**

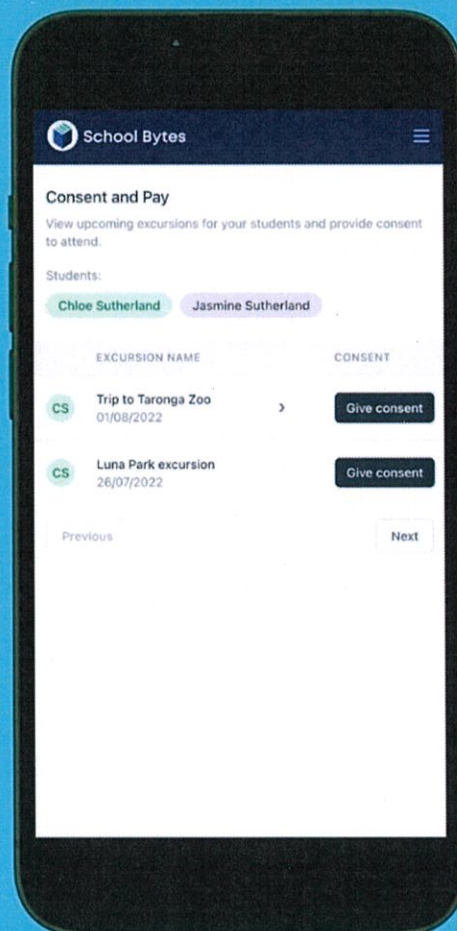
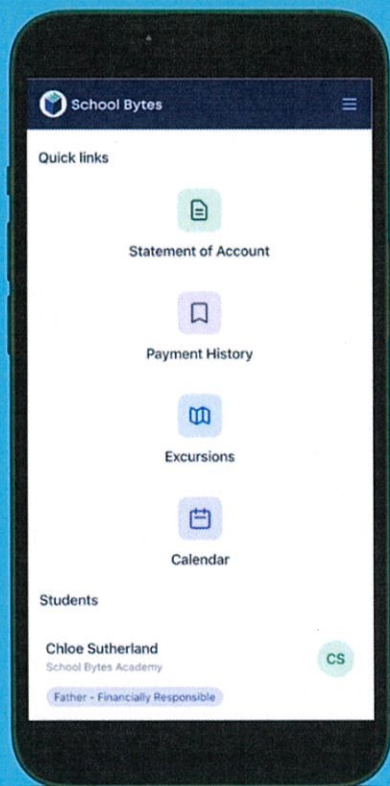
**Where: Music Room**





# AVAILABLE NOW!

We are excited to announce our school will be transitioning to a more flexible and simplified way parent/carers can make payments



## The Parent Portal

- Easily make a payment online
- Download your receipt
- Sign and return permission notes digitally
- Use any credits on your account to make payment
- View your complete payment history
- Request a refund



School Bytes

AVAILABLE DURING

# TERM 1

Register for the Parent Portal via the QR Code or visit

<https://portal.schoolbytes.education>







SYDNEY  
ACADEMY OF CHESS

Level 1 30A George St, Burwood 2134

Office: (02) 9745 1170

## CHESS!!

Learn to be a chess champion! Coaching for students at Erskineville Public School is held on Thursdays from 8:00am to 9:00am, starting on 27 April 2023.

Learning and playing chess helps children develop their logical thinking and problem solving skills, improves their concentration and focus, while also being a great source of enjoyment. Activities include group lessons on a demonstration chess board or interactive whiteboard, puzzle solving and fun practice games.

Students earn merit awards by making checkmates, or by displaying skills and positive qualities, which all good chess players strive to develop.

If your child is interested in taking part, you can collect an enrolment form from the school office, or email [enrol@sydneyacademyofchess.com.au](mailto:enrol@sydneyacademyofchess.com.au) for a copy. For all enquiries, please contact Sydney Academy of Chess on (02) 9745 1170.



# DRAMA GAMES!

*A Fun & Fast Paced Drama Program Where Students Learn Teamwork Skills & Impro Games to Perform for YOU at the end of Term!*



## ERSKINEVILLE PUBLIC SCHOOL

STARTING TERM 1, 2023!

**K - 2 : FRIDAYS**

**YEAR 3-4 : FRIDAYS**

**YEAR 5-6 : FRIDAYS**

Only  
\$230 /  
Term

ALL CLASSES RUN  
3-5pm  
ON SITE @ SCHOOL

Limited  
Spots!  
Hurry!

To Register Now - Go To [www.redroar.com.au](http://www.redroar.com.au) - Click on the 'Register Online Today' Button, Fill In the Form & Send!  
Check Out Our History & Testimonials There Too! For Any Other Querles, Email [director@redroar.com.au](mailto:director@redroar.com.au)





# 2023 Athletics

Expression of Interest Forms Now Available  
[www.lucyestela.com/erkoathletics](http://www.lucyestela.com/erkoathletics)

There's a new short course  
each term in 2023.  
Visit the website  
to find out more.

## YEARS 3-6

**Mondays 3-4.30pm**  
**May 1st - June 26th**  
**8 weeks \$155**

please note: public holiday 12th June

Athletes will be put through their paces with a weekly training session focusing on fitness, strength, coordination and agility.

As part of each session they will be introduced to the various events that they will encounter at the School Athletics Carnival which will be in term 3. Sprinting, Relays, Shot Put, Discus Long Jump and High Jump will be covered.

Kindy athletes may now join

## YEARS K-2

**Tuesdays 3-4.15pm**  
**7th Feb - 4th April**  
**9 weeks \$160**

Join us in the lower playground where athletes will be following a modified Athletics Australia Play program which provides them with a range of games and drills designed to develop and practice the fundamental movement skills of beginner athletes.

Athletes will perform activities that focus on ball skills, jumping, running, agility courses, hurdles, skipping, balance and coordination as well as the Luna Park Run!



sprints



jumps



discus



hurdles



javelin



relays



shot put



high jump





# You can learn French at Erskineville PS

Our classes are designed to be creative and playful, whilst encouraging your child to make serious progress in their ability to understand, read and speak French.

**TERM 2**

**Save \$100 with Creative Kids**

**4 May to 29 June**  
1 hr per week for 9 weeks



Enrol before **Friday 21 April** to enjoy 5% off  
Re-enrollers enjoy an additional 5% off  
As little as \$27/hr with Early Bird discount



[www.afsydney.com.au](http://www.afsydney.com.au)  
[school-activities@afsydney.com.au](mailto:school-activities@afsydney.com.au)  
(02) 9292 5700



Alliance Française  
Sydney





# CODING FOR KIDS

Term 1, 2023

Y1 - Y6 Students

## CREATIVE CODING

**Erskineville PS**

In-person

**Every Monday**

6 Feb - 3 April | 9 weeks

### BEGINNER

**3:00 - 4:15 pm**

Y1 - Y5 beginner students

### INTERMEDIATE

**4:30 - 5:30 pm**

Y3 - Y6 experienced students

**Laptops are provided**

---

\$243 per student per term



## Learn to code and build your own online projects with CODE4FUN

Year 1 to Year 6 students are welcome to join. STEM focused programs - students develop critical thinking and problem solving skills by learning to code.



**SAVE \$100  
ON YOUR CHILD'S  
ENROLMENT**

**ENROL NOW AT**  
[code4fun.com.au/eps](https://www.code4fun.com.au/eps)

If you have any questions email us at  
[info@code4fun.com.au](mailto:info@code4fun.com.au)  
or call **0452 525 453**

Learn more about CODE4FUN:  
[www.code4fun.com.au](https://www.code4fun.com.au)



# Compulsory school attendance

## Information for parents

Education for your child is important and regular attendance at school is essential for your child to achieve their educational best and increase their career and life options. NSW public schools work in partnership with parents to encourage and support regular attendance of children and young people. When your child attends school every day, learning becomes easier and your child will build and maintain friendships with other children.

### What are my Legal responsibilities?

Education in New South Wales is compulsory for all children between the ages of six years and below the minimum school leaving age of 17 years. The Education Act 1990 requires that parents ensure their children of compulsory school age are enrolled at, and regularly attend school, or, are registered with the NSW Education and Standards Authority for home schooling.

Once enrolled, children are required to attend school each day it is open for students.

### The Importance of arriving on time

Arriving at school and class on time:

- Ensures that students do not miss out on important learning activities scheduled early in the day
- Helps students learn the importance of punctuality and routine
- Give students time to greet their friends before class
- Reduces classroom disruption

Lateness is recorded as a partial absence and must be explained by parents.

### What if my child has to be away from school?

On occasion, your child may need to be absent from school. Justified reasons for student absences may include:

- being sick, or having an infectious disease
- having an unavoidable medical appointment
- being required to attend a recognised religious holiday
- exceptional or urgent family circumstance (e.g. attending a funeral)



Following an absence from school you must ensure that within 7 days you provide your child's school with a verbal or written explanation for the absence. However, if the school has not received an explanation from you within 2 days, the school may contact you to discuss the absence.

Principals may decline to accept an explanation that you have provided if they do not believe the absence is in the best interest of your child. In these circumstances your child's absence would be recorded as unjustified. When this happens the principal will discuss their decision with you and the reasons why.

Principals may request medical certificates or other documentation when frequent or long term absences are explained as being due to illness. Principals may also seek parental permission to speak with medical specialists to obtain information to collaboratively develop a health care plan to support your child. If the request is denied, the principal can record the absences as unjustified.

## Travel

Families are encouraged to travel during school holidays. If travel during school term is necessary, discuss this with your child's school principal. An Application for Extended Leave may need to be completed. Absences relating to travel will be marked as leave on the roll and therefore contribute to your child's total absences for the year.

In some circumstances students may be eligible to enrol in distance education for travel periods over 50 school days. This should be discussed with your child's school principal.

## My child won't go to school what should I do?

You should contact the principal as soon as possible to discuss the issue and ask for help. Strategies to help improve attendance may include a referral to the school's learning and support team or linking your child with appropriate support networks. The principal may seek further support from the Home School Liaison Program to develop an Attendance Improvement Plan.

## What might happen if my child continues to have unacceptable absences?

It is important to understand that the Department of Education may be required to take further action where children of compulsory school age have recurring numbers of unexplained or unjustified absences from school.

Some of the following actions may be undertaken:

- Compulsory Schooling Conferences

You may be asked, along with your child, to attend a Compulsory Schooling Conference. The conference will help to identify the supports your child may need to have in place so they attend school regularly. The school, parents and agencies will work together to develop an agreed plan (known as Undertakings) to support your child's attendance at school.

- Application to the Children's Court – Compulsory Schooling Order

If your child's attendance at school remains unsatisfactory the Department may apply to the Children's Court for a Compulsory Schooling Order. The Children's Court magistrate may order a Compulsory Schooling Conference to be convened.

- Prosecution in the Local Court

School and Department staff remain committed to working in partnership with you to address the issues which are preventing your child's full participation at school. In circumstances where a breach of compulsory schooling orders occurs further action may be taken against a parent in the Local Court. The result of court action can be the imposition of a community service order or a fine.

## What age can my child leave school?

All New South Wales students must complete Year 10 or its equivalent. After Year 10, and up until they reach 17 years of age, there are a range of flexible options for students to complete their schooling.

## Working in Partnership

The NSW Department of Education recognises that working collaboratively with students and their families is the best way to support the regular attendance of students at school.

We look forward to working in partnership with you to support your child to fulfil their life opportunities.

# Days missed = years lost

A day here and there doesn't seem like much, but...



## More information

Further Information regarding school attendance can be obtained from the following websites:

### Policy, information and brochures:

Please visit the Department of Education's Policy Library AND The Department's Attendance Matters Website

### The school leaving age:

Please visit the Department of Education's Wellbeing and Learning website

### Do you need an interpreter?

Interpreting services are available on request, including for the hearing impaired. The Telephone Interpreter Service is available 24 hours a day, seven days a week on **131 450**. You will not be charged for this service.