



ERSKINEVILLE PUBLIC SCHOOL  
Malcolm Street, Erskineville NSW 2043  
T 02 9557 5206 F 02 9550 4593  
E [erskinevil-p.school@det.nsw.edu.au](mailto:erskinevil-p.school@det.nsw.edu.au)

# Newsletter

YOUR COMMUNITY SCHOOL FOR THE FUTURE

Thursday 3 November\_ TERM 4 WEEK 4\_ 2022

## DATES FOR YOUR DIARY 2022

### TERM 4

- Friday 4th November\_** State Final Spelling Bee  
**Tuesday 8th November\_** 2023 Kindy Orientation  
**Thursday 10th November\_** Pact theatre healing country  
**Friday 11th November\_** Remembrance Day Assembly 10.30\_ All Welcome  
**Thursday 17th November\_** 2023 Kindy Orientation  
**Saturday 26th November\_** School Spectacular  
**Thursday 1st December\_** Cadenza  
**Friday 9th December\_** Field of Mars\_ Stage 1  
**Wednesday 14th December\_** Year 6 Graduation, Party & Presentation **Thursday 15th December\_** Erko's got talent **Tuesday 13th December\_** Stage 3 picnic  
**Friday 16th December\_** Year 6 clap out

**Last Day of School for students**  
**Friday 16th December**





## Principal's Update

Erko Berzerko - Thank you so much to you our community for another successful Erko Berzerko. The sheer number of people who put the hands up to support in some capacity, the running of the fete was a sight to behold. I know our students loved it as did many of the wider community who came into the school. Thank you to our tireless and hard-working P & C who made this happen - your efforts are very much appreciated by the staff. Thank you to the terrific erko staff for being patient and helping out in so many ways on the day and behind the scenes. We now come to the part I enjoy the most - spending! Staff have been discussing what resources will meet the needs of our students and programs and this will be discussed in due course with the P & C.

School leadership - next week we begin the process of electing our new school leaders for 2023 all of whom will be announced at our year 6 presentation on Wednesday week 10. We have reviewed our policy and have made some changes; the major changes being interviews with exec. for all candidates and students choosing the leadership role they wish to apply for rather than defaulting to a position if they are unsuccessful. Students have been asked to choose based on where they feel their strength lies and where they can add value to our school leadership.

Kindy orientation – Our Kindy orientations begin next week on Tuesday with an introduction to school presentation. The second meeting in the following week will concentrate on important community aspects that support our school such as P & C, Gowrie and Pickles (uniforms). We currently have over 60 students for kindergarten and these numbers are still going up. Ms. Russo, Ms. Hopkins (our counsellor) and I will then briefly interview all new enrolments and their parents so we can plan for a successful introduction to school next year.

State spelling bee - good luck to Annabel who has made it to the state spelling bee on Friday

A reminder too that the next P & C I will be talking about our Naplan results for this year and some identified trends from the data received.





# ERKO LEARNING

TERM 4, WEEK 4 AND 5

## ENGLISH

### PHONICS, SPELLING AND WRITING

In spelling, ESI students continue vowel diagraphs with the long /i/ sound (i\_e, y) as in 'ice' and the long /o/ sound (o\_e, oa) as in 'boat'.

S1, S2, and S3 are focusing on /ow/ sound (ow, ou) as in 'cloud' and the /ch/ (ch, tch) and /sh/ (sh, si, ti, ci) sounds.

In writing, S1 students have begun a unit on explanation texts linked to their science unit on living things. They are writing about the process of growing a bean plant from seed.

S2 students are beginning a unit on persuasive texts also linked to their science unit on living things. They will argue that living things need our protection.

S3 students are continuing with their structured English unit focused on narrative and informative texts. This is also linked to their science unit on living things, sustainability and climate change.

How can you help?

Spelling: Log on to find your child's spelling focus words and extension words that they may use in class. Play some of the online games to reinforce phonics knowledge and the skill of segmenting ([https://online.fireflyeducation.com.au/services/student\\_login](https://online.fireflyeducation.com.au/services/student_login)).

Writing: Involve your child in writing for a purpose. Is it time to write to a relative or friend? Would they like to write a journal/letter?

ESI and S1- Can your child use capital letters, full stops and understand sentence boundaries?

S2 and S3- Can your child begin a topic with a general statement, write in full sentences that are linked by a common idea and take a new paragraph at an appropriate time?

## MATHEMATICS

### NUMBER AND ALGEBRA, MEASUREMENT AND GEOMETRY

In Term 4, weeks 4 and 5, students will particularly focus on:

ESI: Whole number, Patterns and Algebra

S1: 2D shape, Multiplication and division

S2: Time, Multiplication and division

S3: Area and perimeter, 2D and 3D space

How can you help?

K-2: Practice skip counting. Can your child count by 2s, 5s, 10s? If so, practise 3s, 4s, 6s, and even 7s, 8s and 9s.

3-6: Does your child know their times tables? And the matching division facts? Try the fives and sixes this week! AND Can your child tell the time on an analog clock? Can they calculate elapsed time?

## MORE WELLBEING

After analysing the results of our Be You surveys, last week staff began their Be You professional learning to support us in creating 'Mentally Healthy Communities'. From our survey results, we found that in general staff, students and families have a strong understanding about how wellbeing and mental health impacts physical, social, emotional and cognitive development. As our learning progresses we will delve into how we can use the Mental Health Continuum to more confidently identify children who need support and learning how we can go about supporting them to flourish at school, home and into their futures.

For Buddy classes over the rest of the term, children will be working to create signage for our playground that will clearly communicate the expectations of our school. We have talked about how meeting these expectations helps everyone to stay safe and happy. The children whose signage is selected will have their design displayed around the school and in the newsletter.

If you require additional information regarding any of the above, please contact your child's teacher.

\*\*please note that due to school events, some areas may be taught at different times





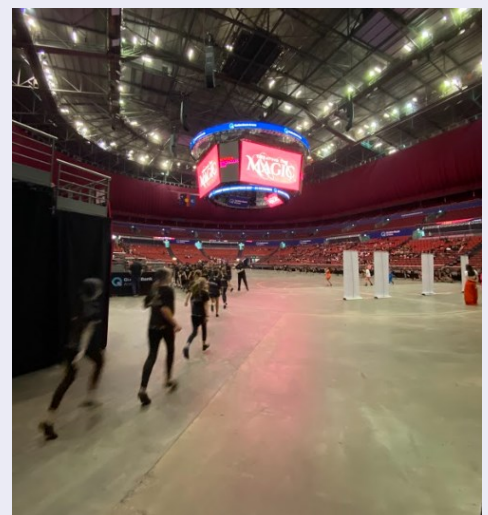
## We're a Spectacular School!

This year a group of K-2 students will be participating in the annual Schools Spectacular 2022! The event will be held at Qudos Bank Arena over the 25<sup>th</sup> and 26<sup>th</sup> of November.

This remarkable annual event will celebrate youth, education, culture, diversity and young Australian talent and will feature over 5,000 students from across New South Wales public schools.

Tickets are still available to purchase from Ticketek! We would love to see you there!

<https://premier.ticketek.com.au/shows/show.aspx?sh=SCHOOLSP22>





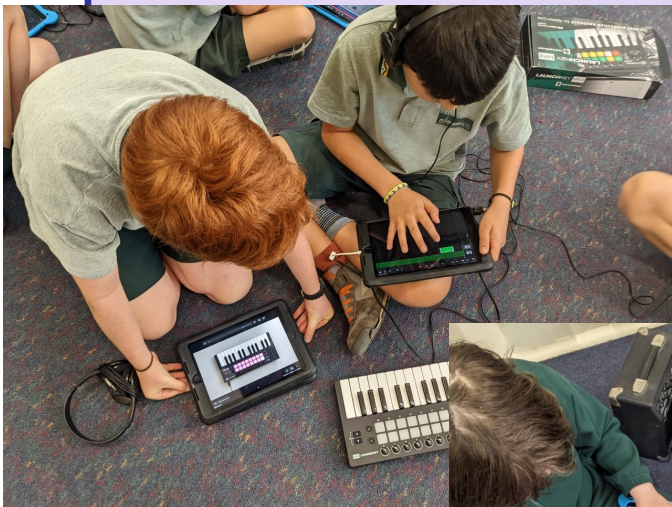


## Music Program

In Stage 3 Music, students have been using technology to compose songs. Using Launchkey Mini MIDI keyboards and Garageband, students have been able to recreate familiar songs and classic video game themes, such as Tetris. We are currently learning how to use the Launchkey Mini to record loops, focussing on drum and percussion loops. Students are working towards composing their own video game theme songs, inspired by those we have studied and recreated this term.

**Micaela Cecire**

Music Teacher & Band Co-ordinator







**Art Stage 2 - Clay Faces**  
**Stage 1 Animal Patterns**  
**Art Program Ms Stein**

Year 3 and 4 clay faces, so much fun!







## Band Program

The Intermediate and Concert Band were the opening performances at Erko Bezerko on the weekend! Both bands played amazingly - congratulations to all the students involved, and to Brendan and Emily, too!

Later this term we have auditions for training/intermediate band students to move up a band in 2023 (date to be confirmed) and of course, our end of year concert - Cadenza! On December 1st. Save the date! Details to come, but certainly all bands will be performing.

EOIs are now open for training band 2023. The program is open to students in year 3-6 (or year 2 with previous music experience).

Contact Emily - [erkomuso@gmail.com](mailto:erkomuso@gmail.com) for more information.



Rocky competed in the State Athletic Championships at Sydney Olympic Park, representing Erskineville and the Sydney East PSSA in the discus event.

He threw a mammoth 27m to achieve 13th out of 40 in the state. Only 5 metres off the leader in the event.

Fantastic result, Well done Rocky





## ERSKINEVILLE PS PARENTS & CITIZENS (P&C) ASSOCIATION NEWS

### UPCOMING P&C MEETINGS

Meetings are held in the School Library, entry via the Bridge St gate. Please arrive at 6:45pm for a prompt 7pm start.

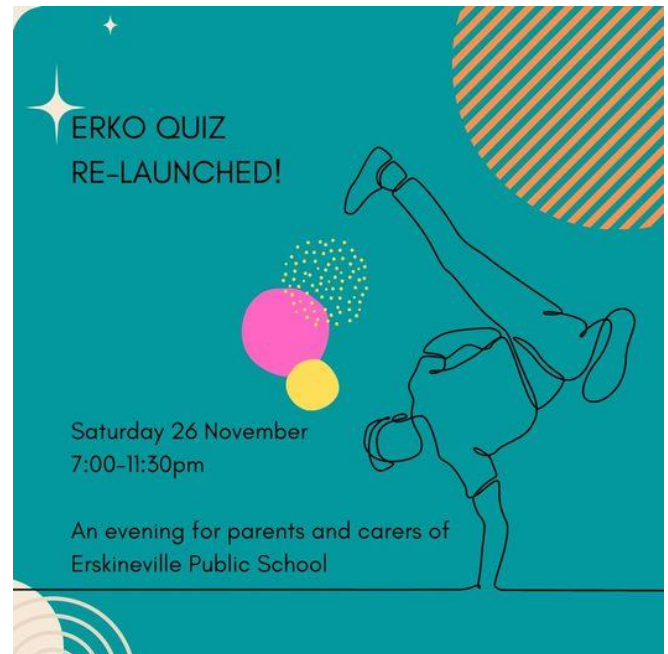
Our next meeting dates are:

**Tuesday 16 November**  
**Tuesday 6 December**

Everyone is always welcome to drop into a meeting whenever you can, so come along anytime.

**To vote at a meeting** you need to have become a member of the P&C prior to the close of the previous meeting. You can join anytime online:

<https://erkopandc.bigcartel.com/>



### ERKO QUIZ

**Saturday 26 November (end of Week 7)**

Erko Quiz 2022 is fast approaching! Dust off your dancing shoes and brain cells for a night with fellow parents and carers.

This great social evening will be on at Erskineville Public School on Saturday 26 November from 7:00-11:30pm. Enter from Bridge Street gates.

The evening will consist of a hosted trivia event followed by local parent DJ and Hive DJ regular the "JDawg" spinning records till 11:30pm. A fully stocked bar and pre-purchased pizzas will be available on the night.

For more information and to purchase tickets and pizzas please visit: [www.erkopandc.bigcartel.com](http://www.erkopandc.bigcartel.com) (and pick up a cheeky P&C membership while you're there!)

Any direct questions or you would like to help out with setting up on Friday or Saturday please contact Mel or Mark Smith (parents of Lola Smith, Lilly Pilly Yr 4) on:

0403 401 244 - Mel  
 0418 220 928 - Mark

We look forward to seeing you on the night!



### THANK YOU

**... for your contribution to Erko Berzerko**

What a day! The weather cooperated and the crowds certainly turned up to enjoy Erko's big day out.

Thank you to everyone who volunteered for a stall or behind the scenes, set- and packed-up, watched the kids so others could help, or spent up big on the day!

Everyone's fantastic efforts led to an incredibly successful event. We're still tallying final numbers (so if you have receipts requiring reimbursement, please get them in ASAP!) but we hope to have an updated fundraising tally at our P&C meeting on Tue 16 Nov.

Huge thanks to our Platinum Sponsors, Shaun Stoker & Ercan Ersan of Ray White Erskineville, whose donation of a commission-free sale sold for an astounding \$34,000 - all of which goes to our school.





## FRESH CHRISTMAS TREES

**Order now, collect on Saturday 3 Dec**

Bring home a touch of magic with a real Christmas tree. All this rain means that our trees, currently happily growing in the Southern Highlands, are looking especially lush this year.

Order at [www.erkoberzerko.com/buy-online](http://www.erkoberzerko.com/buy-online) and all profits go to our school. Collect your tree from the school carpark on Sat 3 December.

## ERKO COMMEMORATIVE TEATOWELS

**Pre-orders delivered from today**

Our cute tea-towels featuring kids' and teachers' self-portraits will be heading home from Friday this week.

If yours doesn't make it, don't panic! It can take a few days for teachers to distribute them all.

However, if your child goes to Gowrie or Drama after school, check that they haven't received their order and left it behind.

**Forgot to order?** A small number of extra tea towels may be available for late orders. Check [www.erkoteatowels.bigcartel.com](http://www.erkoteatowels.bigcartel.com).

**We need a new tea towel coordinator!** Huge thanks to Amy who has coordinated the tea towel orders single-handedly for the past four years. Next year, we're looking for a new face to join "Team Tea Towel" and learn how it's done.

If you're keen to see the Erko tea towel tradition continue, and would like to know what's involved, please contact Amy (mum of Arlo from Wollemi) on 0414 430 159.

## CALLING ALL KINDY FAMILIES

**It's time to welcome Kindy 2023**

It's hard to believe the year is drawing to a close, and we're preparing to welcome our newest Kindy class.

Continuing our Erko tradition, Kindy 2022 is already making plans to help new Kindy families feel welcome.

This will include:

- Hosting morning tea and running a 'small sizes' uniform co-op at the second Kindy Orientation Day on Thursday 17 November.
- Planning 'Playdates in the Park' for new families to get to know each other (and to ask current Kindy families lots of questions!) towards the end of term and in late January.
- Hosting the Kindy Welcome BBQ in Term 1, 2023.

**Current Kindy parents and carers who would like to attend or help organise these activities** should contact Ajanta (AJ) Malhotra, mum of Anika in Kindy and Aarav in Yr 3, on 0430 221 196.

## SPENDING P&C FUNDRAISING

**Proposals to be emailed in advance**

If you would like to propose a project to be funded from P&C fundraising (including Erko Berzerko), you must formally propose your idea at the November P&C Meeting – coming up on Tuesday 16 November. This allows us to distribute details of all proposed projects before voting at the December meeting.

**To propose a project, please email [erkopandc@gmail.com](mailto:erkopandc@gmail.com) by Friday 11 December** to ensure your idea is included in the agenda.

If you can't make it in person to the meeting, please mention this in your email and a member of the P&C Exec will present your idea on your behalf.

**YOU MUST BE A MEMBER TO VOTE:**

To vote on spending P&C funds (or on any proposal at all), you **MUST** be a P&C member by the end of the meeting prior. This means, to vote on spending our Erko Berzerko and other fundraising profits, you must have joined before the end of the meeting on Tuesday 16 November.

You can join online anytime:  
[www.erkopandc.bigcartel.com](http://www.erkopandc.bigcartel.com)

**Don't forget that memberships expire** at the end of each year! If you're a long-time member, make sure you've renewed your membership in 2022 to be eligible to vote.





# How to pack your waste-free lunch



## Yes please

- ✓ Food in reusable containers
- ✓ Drinks in refillable containers
- ✓ Reusable utensils where required
- ✓ A reusable lunchbox or bag

## No thanks

- ✗ Food packed in plastic wrap, single-use plastic bags, foil or wax paper
- ✗ Single-use drink boxes, cans, pouches, cartons and bottles
- ✗ Single-use plastic forks and spoons
- ✗ Pre-packaged single-serve snack items



## Did you know?

The average student's lunch generates around 3kg of waste per school year.

Spend less. Waste less. Eat well.





SYDNEY  
ACADEMY OF CHESS

Level 1 30A George St, Burwood  
2134

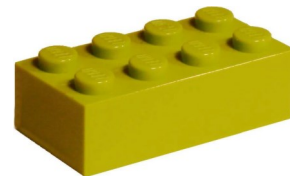
Office: (02) 9745 1170

## CHESS!!

CHESS!! Learn to be a chess champion! Coaching for students at Erskineville Public School is held on Thursdays from 8:00am to 9:00am, starting on 13 October 2022. Learning and playing chess helps children develop their logical thinking and problem solving skills, improves their concentration and focus, while also being a great source of enjoyment. Activities include group lessons on a demonstration chess board or interactive whiteboard, puzzle solving and fun practice games. Students earn merit awards by making checkmates, or by displaying skills and positive qualities, which all good chess players strive to develop. If your child is interested in taking part, you can collect an enrolment form from the school office, or email [enrol@sydneyacademyofchess.com.au](mailto:enrol@sydneyacademyofchess.com.au) for a copy.

For all enquiries, please contact Sydney Academy of Chess on (02) 9745 1170.

# Lego Masters



### INFO:

Lego Masters is a club where you can have fun, use your imagination and creativity and make new friends you will make awesome builds and complete hard challenges like this



Well, maybe that is a little too big but our builds will be awesome!

Lego masters club is on Tuesdays, 1st half of lunch. Lego masters club will be in Wollemi







## Have you changed your contact details?

It's important we know in case of sickness or emergency.

Child's Name: ..... Class: .....

Change of address: .....

.....

New telephone numbers: .....

Change to emergency contacts: .....

.....

.....



EMERGENCY

### Early Pick-up & Late Arrival

If your child is leaving the school early or arriving late for any reason, they must sign in/out at the office.

### NEW BELL TIMES

8.30AM	Supervised Playground Duty
9.00 - 11AM	CLASS Time
11.10 - 12.00PM	LUNCH & PLAY time
12.00 - 1.30PM	CLASS Time
1.30 - 2.00PM	RECESS
2.00 - 3.00PM	CLASS Time
3PM	HOME TIME

### NIT ALERT!

There has been an outbreak of head lice at the school.

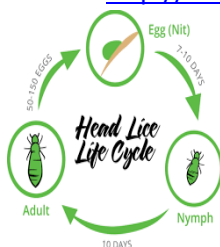
Head lice are very common so there is no need to be alarmed.

As children get their heads together, just one infested head can infest a whole class.

We all need to act together if we don't want uninvited guests coming home for a sleepover.

For more information on treatments available:

<http://www.health.nsw.gov.au/environment/headlice/pages/default.aspx>





## HERO'S JOURNEY!

*A Fun & Fast Paced Drama Program Where Students Learn Storytelling & Solo Acting for Performance to YOU at the end of Term!*



**ERSKINEVILLE PUBLIC SCHOOL**

**STARTING TERM 3, 2022!**

**K - Year 2 : Fridays**

**Year 3-4 : Fridays**

**Year 5-6 : Fridays**

**ALL CLASSES RUN 3-5PM ON SITE @ SCHOOL**

Only  
\$230 /  
Term

Limited  
Spots!  
HURRY!

To Register Now - Go To [www.redroar.com.au](http://www.redroar.com.au) - Click on the Big Red 'Register Online Today' Button, Fill in the Form & Send! Check Out Our History & Testimonials There Too! For Any Other Queries, Email [director@redroar.com.au](mailto:director@redroar.com.au)

## ENROL NOW FOR KINDERGARDEN 2023

If you have a child or know of anyone who would like to enrol their child for Kindy 2023, please direct them to our website for the Erskineville PS, Department of Education online;

<https://enrol.education.nsw.gov.au/#/?schoolCode=4147>





# CODING FOR KIDS

Term 4, 2022

Y1 - Y6 Students

## CREATIVE CODING

### Erskineville PS

In-person

### Every Monday

17 Oct - 12 Dec | 9 weeks

### BEGINNER

4:30 - 5:30 pm

Y1 - Y5 beginner students

### ADVANCED

3:00 - 4:15 pm

Y4 - Y6 experienced students

**Laptops are provided**

---

\$243 per student per term

## ENROL NOW AT

[code4fun.com.au/eps](https://code4fun.com.au/eps)

If you have any questions email us at

[info@code4fun.com.au](mailto:info@code4fun.com.au)

or call **0452 525 453**

Learn more about CODE4FUN:

[www.code4fun.com.au](https://www.code4fun.com.au)



## Learn to code and build your own online projects with CODE4FUN

Year 1 to Year 6 students are welcome to join. STEM focused programs - students develop critical thinking and problem solving skills by learning to code.



**SAVE \$100  
ON YOUR CHILD'S  
ENROLMENT**

# EXTRACURRICULAR FRENCH COURSES



Our classes are designed to be creative and playful, whilst encouraging your child to make serious progress in their ability to understand, read and speak French.



## TERM 4

**17 October to 15 December**

1 hr/week for 9 weeks

Enrol before **Friday 7 October** to enjoy **5% off**

Re-enrollers enjoy an additional **5%**

Only **\$215** with **10% off**

Less than **\$25/hr** with the early bird discount

## Save \$100 with Creative Kids Rebate

As a registered provider for the Service NSW Creative Kids program, school-aged children between the ages of 4.5 – 18 years are eligible for one \$100 voucher per calendar year to put towards their enrolment into any of our Kids and Teens Courses. Visit our website for details.



[www.afsydney.com.au](http://www.afsydney.com.au)  
[school-activities@afsydney.com.au](mailto:school-activities@afsydney.com.au)  
(02) 9292 5700

*af*  
Alliance Française  
Sydney