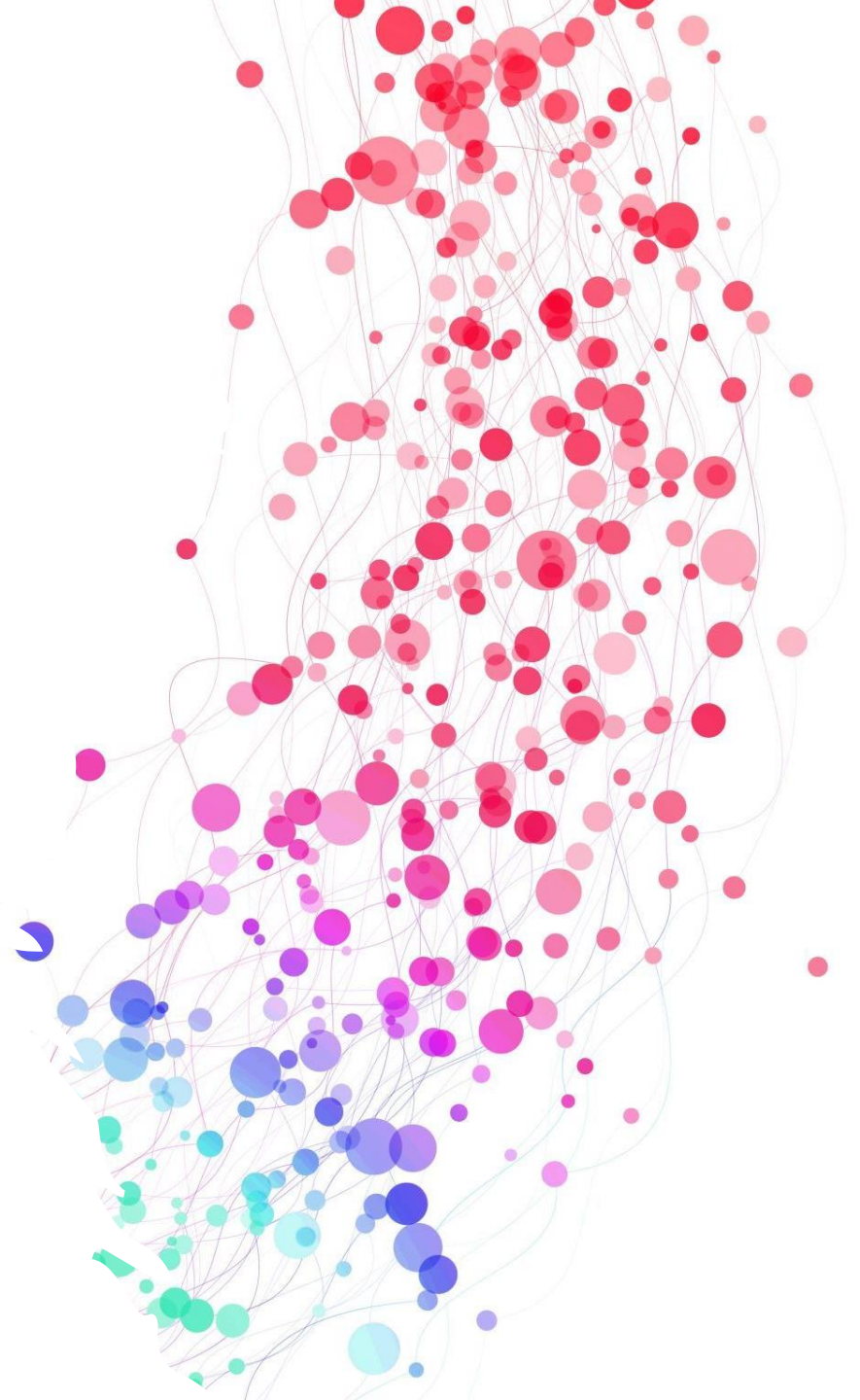


Welcome to BPPS

2024



Classes 2024

- KB – Robin Bentley

Stage 1

- 1H – Rowan Heath
- 1W – Carina Weir
- 2BG – Jenny Beynon / Kevin Gallagher
- 2C – Jo Cooper (Stage 1 Assistant Principal)

Stage 2

- 3W – Lydia Whiston
- 3R - Susanna Robertson (Stage 2 Assistant Principal)
- 4W – Kat White
- 4D – Danni Duffield (Sam Kelly Fridays)

Stage 3

- 56M – Maddy Goldrick (Stage 3 Assistant Principal)
- 56G – Rachael Goodhue



Specialist Subjects

-

K to 6



Brent Robens
Coding, Robotics, and Technology



Gemma Deacon
Music



Rebecca Seelinger
Library



Jorrel Burazer
Physical Education

Class Timetables

	Coding & Robotics	Music	PE	Library
KB	Tues	Tues	Tues	Thurs

	Coding & Robotics	Music	PE	Library
1H	Mon	Tues	Mon	Mon
1W	Mon	Mon	Tues	Mon
2BG	Tues	Mon	Mon	Mon
2L	Mon	Mon	Mon	Thurs

	Coding & Robotics	Music	PE	Library
3W	Mon	Tues	Tues	Tues
3R	Tues	Tues	Mon	Tues
4W	Tues	Tues	Tues	Mon
4D	Tues	Mon	Tues	Tues

	Coding & Robotics	Music	PE	Library
56M	Mon	Mon	Mon	Tues
56G	Mon	Mon	Mon	Tues



Learning
Support
+
High
Potential
Gifted
Education



Sally Rainbow
Learning Support Coordinator
High Potential and Gifted Coordinator
[Learning Support Team](#)
[High Potential & Gifted Education Team](#)



Trent Gardiner
Principal
[Learning Support Team](#)
[High Potential & Gifted Education Team](#)



Edward Johnston
Assistant Principal – Curriculum & Instruction
[Learning Support Team](#)
[High Potential & Gifted Education Team](#)



Susanna Robertson
Assistant Principal – Stage 2
High Potential and Gifted Coordinator
[High Potential & Gifted Education Team](#)



Anna Gibson
EALD (English as an Additional Language or Dialect) Teacher
[Learning Support Team](#)



Cliona Mulloy
School Counsellor & Registered Psychologist
[Learning Support Team](#)

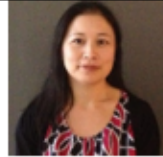
Learning
Support
Coordinator +
School Learning
and Support
Officers



Sally Rainbow
Learning Support Coordinator
High Potential and Gifted Coordinator
[Learning Support Team](#)
[High Potential & Gifted Education Team](#)



Denise Barret
School Learning Support Officer
[Targeted Literacy and Numeracy Programs](#)



Liza Walsh
School Learning Support Officer



Micheal Yun
School Learning Support Officer



Leanne Foster
School Learning Support Officer



Jenny Goddard
School Learning Support Officer



Emily Dunn
School Learning Support Officer



Mel Howes
School Learning Support Officer

Learning Support

What the BPPS Learning support and HPGE team do:

- EAL/D support for students who speak a language other than English at home.
- MiniLit and MacqLit reading support and targeted numeracy support
- Targeted High Potential Gifted and Talented extension programs, extra-curricular opportunities and support.
- Collaborate with relevant stakeholders to develop personalised learning plans and support plans.
- Encourage and support our teachers to create a classroom culture that is inclusive and upholds best practice.

Communication

Communication with our parents is vital. Afternoons are always a better time to meet as before school can be busier for all.

Please arrange a meeting if you would like to discuss your child's progress.

beautypt-p.school@det.nsw.edu.au

Parents and carers, **please respect that our teachers are professionals and have multiple responsibilities outside of their direct teaching commitments.** It may therefore be difficult to arrange meetings at short notice during a school day.

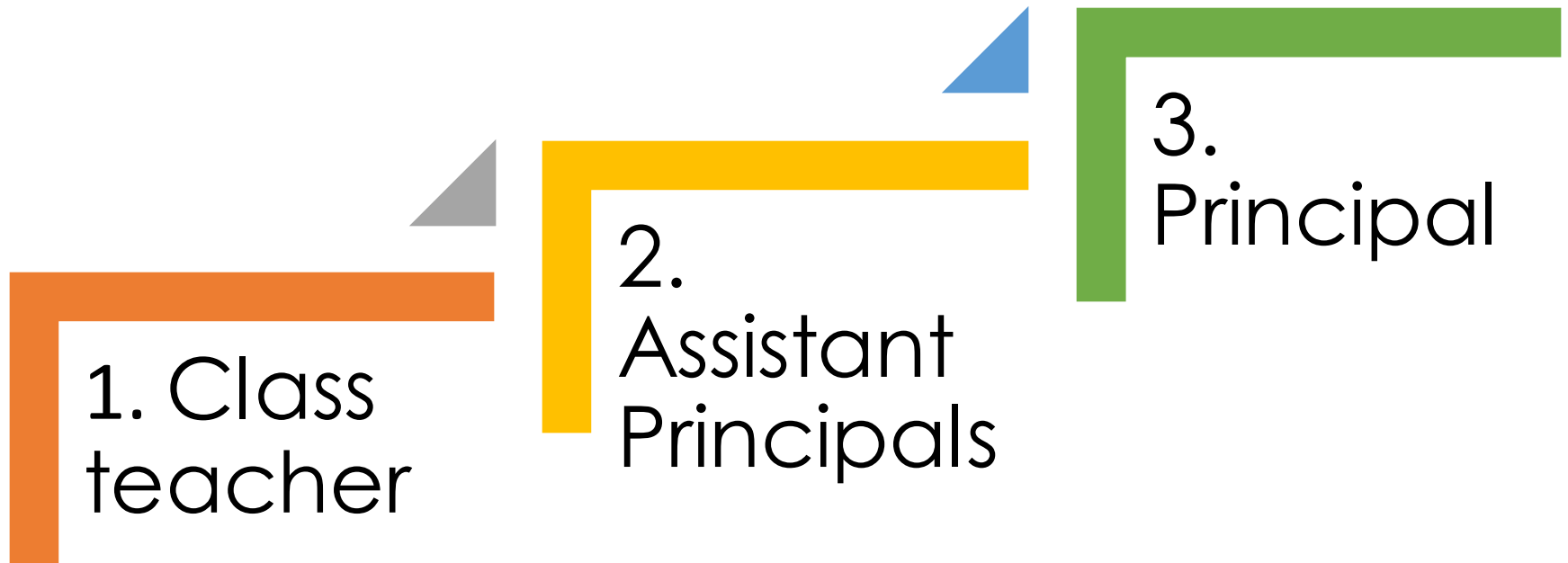
Meetings can be arranged **via email or by contacting the school office on 9969 4260.** Emails sent to the classroom teacher will be responded to within 48hrs.

For urgent matters, the office should be contacted as teachers are not always able to check their emails throughout the day. The office staff will ensure that messages are conveyed to relevant teachers and students before 2.45pm.



Communication

If you have an issue always speak with your classroom teacher first.



Bell Times

From 8.30am: Playground supervision commences

9.00am - School commences for all students K-6

9.00 - 11.00am Learning session 1

11.00 - 11:40am Break 1

11:40 - 1:40pm Learning session 2

1.40-2.20pm Break 2

2.20-3.00pm Learning session 3

3.00pm - End of school



School Communication

Communication with our parents is vital. Please ensure you download the following apps:



Download the Beauty Point Public School app from the App Store to receive school communication alerts and our school newsletter. Please ensure you allow notifications and select your relevant school year and newsletter.



School Bytes

Download the School Bytes app from the App Store to easily make payments, digitally sign permission notes and view your payment history with the school.



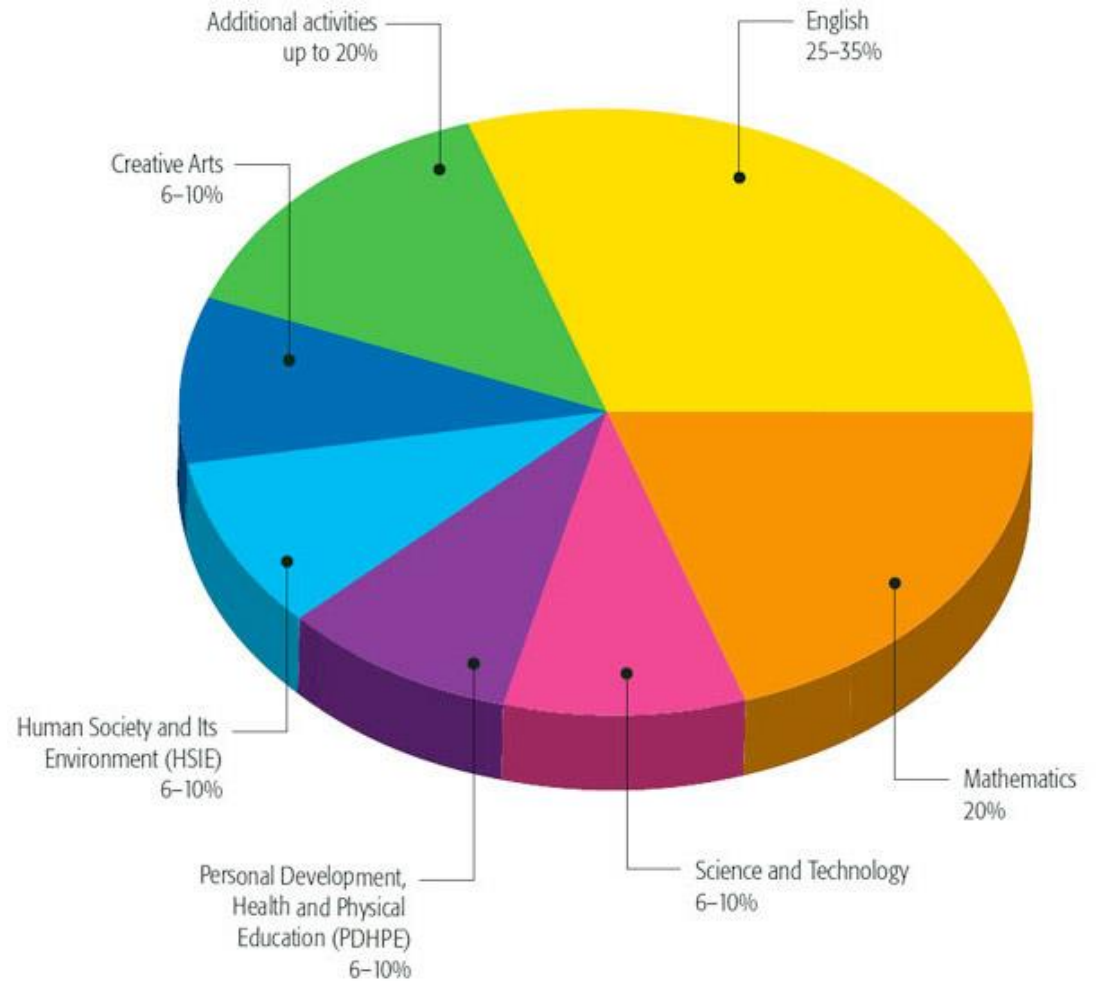
Download the Flexischools app from the App Store for making canteen orders.



Download the Xplor Home app from the App Store to make before and after school care bookings with OOSH.

Key Learning Areas - KLAs

- English
- Maths
- Science
- Geography (formerly HSIE)
- History (formerly HSIE)
- CAPA (Art, Drama, Dance, Music)
- PD/H/PE



Transdisciplinary (TD) Learning at BPPS

Big Ideas and Real-World Thinking

What is transdisciplinary learning?

Transdisciplinary learning enables students to create connections between all school subjects while exploring a relevant concepts, issues, or problems. It supports a deeper understanding of key concepts.

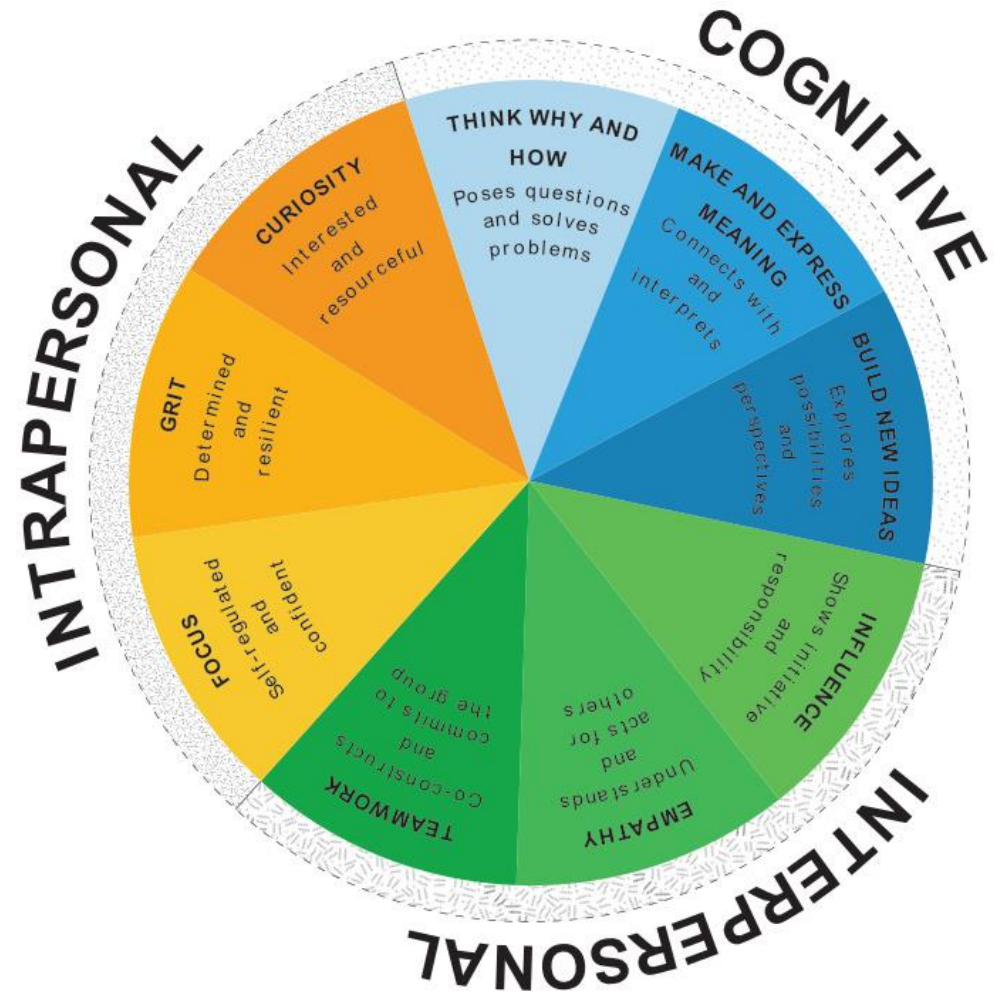
We partner our TD learning with problem solving, creative thinking and critical analysis skills to prepare students for the real world.

Positive
Behaviour for
Learning
Our Core Values

Respect,
Responsibility
Personal Best

What is the Learning Disposition Wheel (LDW)?

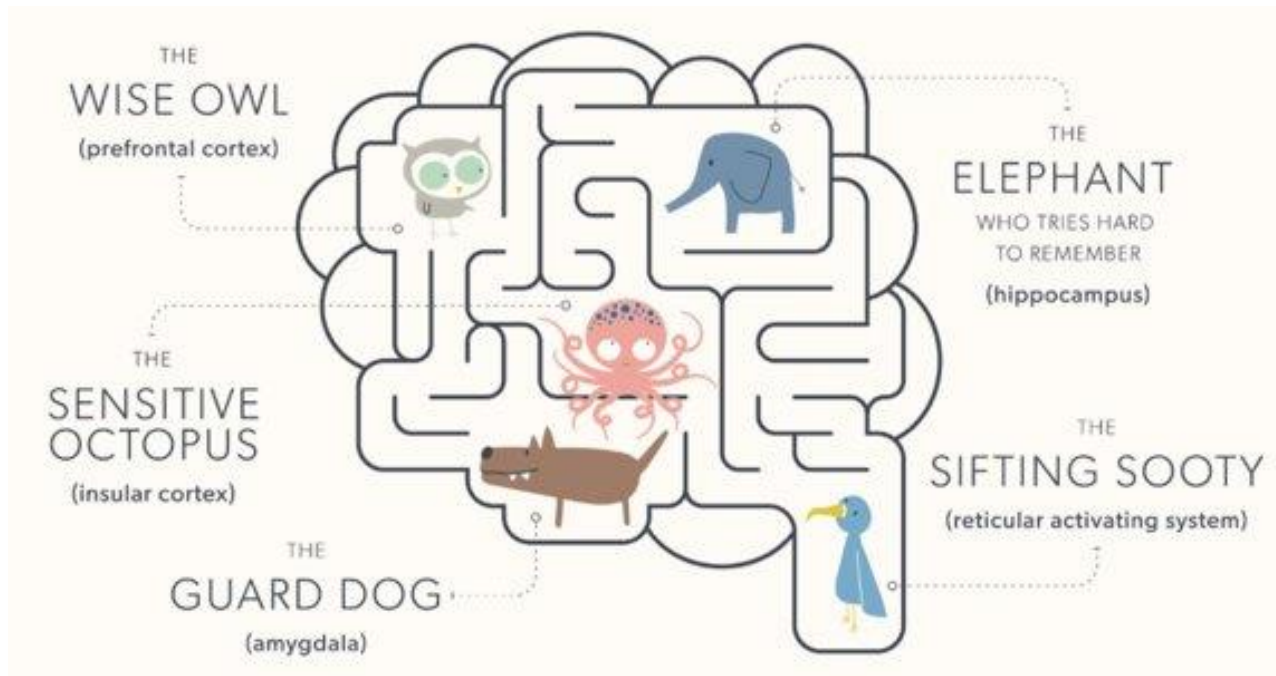
- These are the characteristics that make up a good learner.
- Learning is not just cognitive, it relies on the development of intrapersonal and interpersonal dispositions such as teamwork and grit to learn effectively.



Grow Your Mind

- Personal Development – Wellbeing program

Students at BPPS engage with the Grow Your Mind wellbeing program. The lessons focus knowing your mind, making better choices, kindness and being of benefit.




Bringing Home Waste

Parents Monitor Eating Habits - Students are encouraged to **take all waste and uneaten food home** with them in their lunchbox. This **helps parents monitor which foods students are eating**. You can make sure healthy foods are not ending up in the bin.

Sustainable Practices - Having students **take control of their own lunchbox** helps them engage in discussions about healthy eating and sustainable practices. They can take control of their own recycling.

Bring your lunchbox and cutlery everyday - We are trying to get students to consider the impact single use cutlery has on the environment. **Our lunch suppliers no longer provide plastic cutlery at our request**. Although we have alternative options available, when necessary, we encourage students to bring their own cutlery every day.



Beauty Point students are encouraged to sit calmly each break and eat during their designated eating time.

Time to Eat - This helps teachers to **ensure children are taking the time to eat**. Without encouragement, some children tend to get too caught up in their conversations and/or rush out to play without eating.

Parents Monitor Eating Habits – It is likely that the **food coming back used to end up in the bin**. This **helps parents monitor which foods students are eating**.

Quiet eating places are available for students who take longer or have their eating time interrupted.

SUSTAINABLE ME!

Student Learner Profiles

My name is

Photo

About me...

I like...

I dislike...

I am really good at...

When I grow up, I want to...

An opportunity for:

- Students to express who they are, their aspirations and passions to their new teacher
- Teachers to get to know their students and meaningfully differentiate for individual student needs

About me

Interests

Likes

Dislikes

Insert picture

My Support Team

School is...

No phones or smart watches to be used or worn at school

Phones, smart phones and smart watches must be switched off and put away in students' bags. They are brought to school and left in bags at the student's own risk.

If these devices are used during the school day, they will be confiscated by the classroom teacher and brought to the school office. The school accepts responsibility and liability for confiscated devices. Students can collect their device from the office at the end of the day.

Digital devices are electronic devices that can receive, store, process and share digital information and connect to applications (apps), websites and other online services.

- They include:
 - desktop computers;
 - laptops;
 - tablets;
 - smartwatches;
 - smartphones and other devices.





Respectful

Understand online behaviour and its effects.



Responsible

Think critically and be digitally aware.



Safe

Protect your security, privacy and wellbeing.

Digital Citizenship

- The NSW Government has released a new digital technology policy for all NSW public Schools.
- It now covers student use of smartphones, smartwatches, tablets, laptops and any other device that allows connectivity to the internet and applications.
- You have been sent a copy of the digital policy and it is important that this is signed.
- At BPPS we are promoting Respectful, Responsible and Safe use of digital technology.

Absences

Procedure

If your child is going to be absent from school, please email the office (beautypt-p.school@det.nsw.edu.au) detailing the reason for their absence, so we can update class records. If we do not receive an email, you will receive an automated SMS message from the school, which you will need to respond to. (*Please note: there is no need to call the school.*) If you are going on holiday during term time, please inform both the office and your child's teacher. For absences 5 days or more, you will need to complete an Extended Leave form which is available from the office.



Note Pack (via email)

Please make sure that you sign the following notes that have been emailed home

1. Digital Technology Policy – already emailed to parents
2. Permission to Publish – already emailed to parents
3. P&C Parent Contact List – already emailed to parents
4. Food Allergy Policy – will be sent shortly to parents
5. Declaration for Child Related Workers (and volunteers) - this form needs to be completed if you are volunteering at school or in the classroom. If you have already completed this form at the office, there is no need to complete it again. It only needs to be completed once while you are a parent at the school. If you need to complete it for the first time, please visit the office.

