



Tower Talk

Term 1, Week 5
20 February 2023

Tower Street Public School
74 Tower Street, Panania NSW 2213
Phone: 9773 6017 Fax: 9792 3905
Email: towerst-p.school@det.nsw.edu.au
Web: towerst-p.schools.nsw.edu.au



TowerStreetPS



School Enews app

Coming Events

22 February
Meet the Teacher/BBQ

1 March
Scripture begins

10 March
K - 6 Assembly

Principals Message

On Friday we held the first complete Swimming Carnival in two years. It was fantastic to have all 3-6 students attend the carnival and participate in competitive swimming events or novelty events.

The East Hills PSSA District Swimming Carnival will be held on **Tuesday 7 March at Revesby Swimming Pool**. Further information regarding the District Carnival has been sent home with students who have qualified to attend.

Swimming carnival certificates and ribbons will be presented to our Swimming Carnival place getters at our next assembly on Friday 10 March.



Student Leaders 2023

Congratulations to our 2023 Student Leadership Team who were presented with their official leadership badges during a special assembly held on Friday 10 February.

It was wonderful to share this special moment with family members.

We know our school is in great hands with this fantastic team!



Awards

Silver
Oliver x 2
Jackson

Gold
Oliver
Tori

Platinum
Emily

PBL – Whole School Focus

Each fortnight we have a whole school PBL focus that we address and work on across the school. Classes complete lessons based on the PBL focus and practice the skills in the classroom, playground and at home. We include the fortnightly focus in each edition of Tower Talk so parents and carers can be included in the learning happening at school. Our whole school PBL focus for the fortnight is:



'We clean up after ourselves in the classroom and on the playground'

Courage tool – We have the courage to do the right thing

Caring tool – We care about our school

- Picking up rubbish on the playground
- Packing away toys and equipment
- Making sure our desks are clean before going to recess and lunch
- Reminding others to put their rubbish in the bin

Captain Tower is our PBL mascot and he is here to help parents / carers be involved with our PBL focus.

Here are some questions you could ask your child to help them learn and practice our PBL focus this fortnight at home and school.

Why is it important to clean up after ourselves?



How can you clean up after yourself at home?

Did you remember to keep your area clean after lunch/recess?



New and Improved PBL Toolbox

This year our PBL toolbox tools have been streamlined to ensure all students have a deep understanding of each tool and when to use them.

The number of tools has been reduced from the previous 12 tools to the new consolidated 6 tools. Each fortnight during PBL lessons, we teach students which tools will help them follow our PBL focus and how to use them.



Third Party Online Apps & Class Dojo commencing




This year the Department of Education is requiring schools to seek parental consent before utilising online learning and communication tools that require the sharing of data.

Thank you for returning the Third-Party Permission notes to school so quickly! We are now able to begin using our Third-Party Apps including Class Dojo.

Information regarding the use of Class Dojo will be explained at our Meet the Teacher sessions this week.

Below is information regarding the different communication channels we use at Tower Street PS, including Class Dojo and when to utilise each communication channel.

Communication Tool	Purpose	When is it used?
School Enews App 	<p>Our School Enews App is the main communication channel the school uses to send messages directly to TSPS families.</p> <p>We encourage all parents/carers to download this app to ensure they receive notifications and messages from the school.</p>	<ul style="list-style-type: none"> • Important messages and reminders for the school community. • Announcing if our school is non-operational. • Tower Talk • Weekly Update • Permission Notes • Canteen menu, P&C Uniform price lists • PSSA Competition draws
Tower Street PS Facebook Page 	<p>Our Facebook page is a place where we build our community and school spirit.</p> <p>We celebrate the positive and showcase everything that makes Tower Street PS such a fantastic school community.</p>	<ul style="list-style-type: none"> • Share updates and photos from school events. • Share all the great things that happen at Tower Street PS with parents/carers and the wider community. • Only students who have permission to publish will be included in posts. • Posts will not identify students by name
Class Dojo	<p>This year each class will have a Class Dojo account to share updates and give parents/carers an insight into the</p>	<ul style="list-style-type: none"> • Share insights from each class directly with parents/carers. • Share students learning with their parent/carer

	<p>learning happening in their child's classroom.</p> <p>Class Dojo accounts will be monitored by teachers on school days during set hours and will not be monitored outside these times or over weekends or school holidays.</p>	<ul style="list-style-type: none"> • Class based reminders or messages • Parents/carers will be able to comment on their child's learning and share information with their child's teacher - however, please be aware that important or urgent messages should be directed to the school office.
<p>School Email</p> 	<p>Our school email address: towerst-p.school@det.nsw.edu.au</p> <p>Our school email account is monitored on school days. The email account is not monitored over the weekend or during school holidays.</p>	<p>Please use the school email:</p> <ul style="list-style-type: none"> • Email absence notes including medical certificates and COVID test results. • Non-urgent enquiries or messages for teachers and staff. • Requests for appointments with school staff
<p>School Phone Number</p> 	<p>Our school phone number is:</p> <p style="text-align: center;">97736017</p> <p>Our school phone line is available between the hours of 8.30am – 3.15pm.</p> <p>If you child is sick, hurt or unwell we will phone parents/carers or emergency contacts using this number.</p>	<p>Please contact the school office via the school phone number for:</p> <ul style="list-style-type: none"> • general enquiries • payment advice • urgent messages • enrolment information • booking an appointment with a teacher, school counsellor or the principal.

High School Expression of Interest (EOI) Process

Preparations for the enrolment process for High School entry into Year 7 2024 is currently underway. It is essential that the Tower Street school office has all Year 6 students **CURRENT RESIDENTIAL ADDRESS** please be aware that any updates to residential addresses cannot be made without a 100-Point residential address check. Changes to addresses are recorded on our Department wide system and High Schools can see any changes made.

As a matter of urgency, please contact the Tower Street PS office if you have recently changed residential address or are unsure which address we currently have on our system for your family. The Tower Street office use this information to prepare the High School EOI with your local High School options based on the residential address we have on our system.

We have included a list of documents that can be used to provide 100 points of residential address. All high schools will also conduct a 100-point residential address check as part of the enrolment process. It is highly encouraged that **ALL FAMILIES** start preparing to have these documents ready for High School Enrolment.

Document showing the full name of the child's parent	Points
1. Only one of (i.e. no additional points for additional documents) <ul style="list-style-type: none"> 1.1. Council rates notice 1.2. Lease agreement through a registered real estate agent for a period of at least 6 months or rental board bond receipt 1.3. Exchanged contract of sale with settlement to occur within the applicable school year 	40
2. Any of the following <ul style="list-style-type: none"> 2.1. Private rental agreement for a period of at least 6 months 2.2. Centrelink payment statement showing home address 2.3. Electoral roll statement 	20 each
3. Any of the following documents <ul style="list-style-type: none"> 3.1. Electricity or gas bill showing the service address* 3.2. Water bill showing the service address* 3.3. Telephone or internet bill showing the service address* 3.4. Drivers licence or government issued ID showing home address* 3.5. Home building or home contents insurance showing the service address 3.6. Motor vehicle registration or compulsory third party insurance policy showing home address 3.7. Statutory declaration stating the child's residential address, how long they have lived there, and any supporting information or documentation of this. 	15 each

* up to three months old

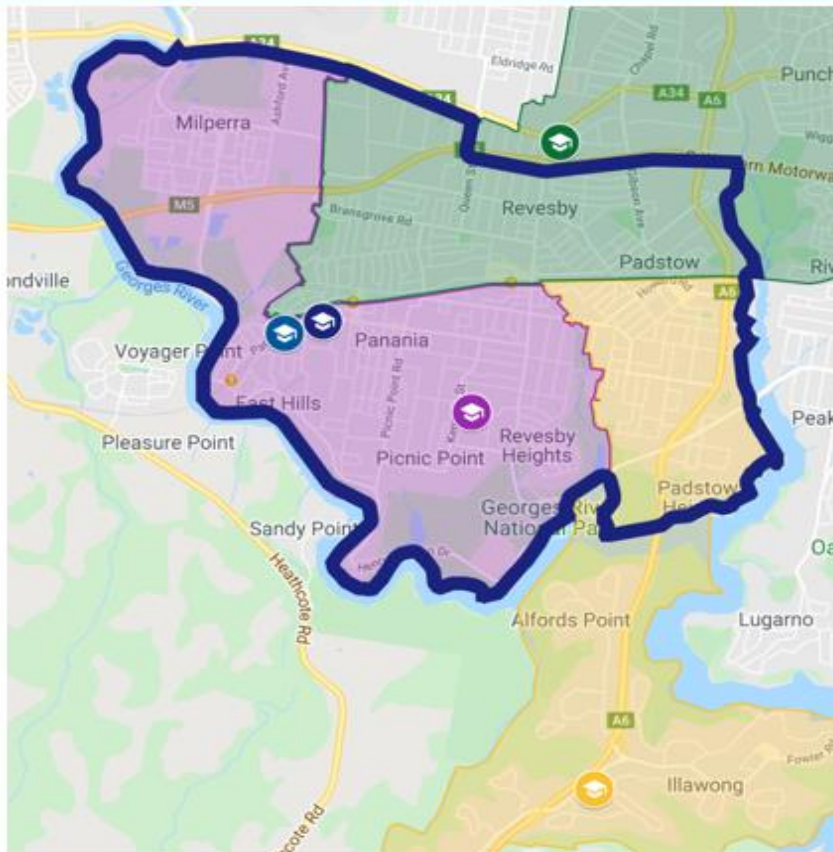
High School Intake Boundaries for Year 7 2024

The intake areas for **Picnic Point HS, Menai HS, Sir Joseph Banks HS, East Hills Girls Technology HS** and **East Hills Boys HS** were changed in 2021 for **prospective Year 7 students** in the East Hills area to provide a choice of both co-ed and single-sex options from 2022 and beyond.

These boundaries will apply for **Tower Street PS Year 6 students** completing the **High School Expression of Interest (EOI) process** in Term 1, 2023 for high school entry in Term 1, 2024. The intake areas apply to **Year 7, Year 8 & Year 9 enrolments in 2023 and will gradually extend to all grades by 2025.**

This map indicates the enrolment areas for East Hills Boys & Girls High Schools as the local single-sex option and the enrolment areas for the 3 Co-Educational High School options depending on your residential address.

East Hills Boys and East Hills Girls Technology intake area expansion highlighted by a dark blue outline to provide single-sex options to all in this area



Co-ed option Picnic Point HS

- Milperra PS
- East Hills PS
- Panania PS
- Picnic Point PS
- Tower Street PS
- Revesby South PS

Co-ed Option Menai HS

- Padstow Heights PS
- Padstow Park PS (south of railway only)

Co-ed Option Sir Joseph Banks HS

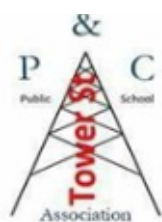
- Panania North PS
- Revesby PS
- Padstow North PS
- Padstow Park PS (north of railway only)

If you have any questions or concerns about high school catchment boundaries, please contact the school office to speak with Mrs Ambrose.

P&C NEWS

The P&C Uniform Shop is open every Friday morning from 8.30 in the OSH Club room. The Uniform Shop is accepting NSW Government 'Back to School Vouchers' for uniform purchases.

Our first P&C meeting for 2023 will be held **at 6pm on Wednesday 22 February**, following the school 'Meet the Teacher' sessions. This is the perfect opportunity to meet our current P&C team and find out more about what the P&C does and what a P&C meeting looks like. All parents and carers are invited and welcome to attend this informal event. We are looking forward to seeing some new faces!



P&C Welcome for 2023

The first Tower Street Public School P&C meeting for 2023 will be held:

Wednesday, 22nd February, at 6pm

This will be following the Meet the Teacher sessions and the Welcome BBQ.
The meeting will be held in the school library and will go for approximately 1 hour.

We would like to welcome all parents to attend, both new and current,
to learn what the P&C is all about.

As a small school, our P&C is also small, so we need as much assistance from parents as possible to keep the P&C running. Each year, we have some parents who leave the P&C as their children get older and move on to High School. We need new parents to join so we can continue to provide support to all the children and families that attend Tower Street.

What does the P&C do?

We provide support to Tower Street Public School by running the Uniform Shop and fundraising events to raise money to fund resources that benefit the children of Tower St.

Over the last few years, the P&C has donated new home readers for K-2, **the green grass play area, the shade-cloth over the canteen waiting area, and funding to contribute towards the installation of new bi-fold doors in between many of the classrooms.**

We meet once a month, in the school library to discuss the Uniform Shop, fundraising events, and ideas for donations. The meetings go for 1 hour and children are welcome to attend with you. They can bring devices or read the books in the library.

We encourage anyone who is interested to join us!



Who is the P&C?



Student Parliament News

Congratulations to our first Birthday Bucket recipients! Birthday bucket order forms are available from the office.

Fun Food Friday will be continuing this week with Zooper Doopers on sale from the canteen for \$1 during recess.

All money raised from these fundraisers will support the Year 6 Farewell event at the end of the year.





This week we officially launch Year 6's newest fundraiser
'THE BIRTHDAY BUCKET!'
Fundraising that helps Year 6 students and you!

BIRTHDAY BUCKETS!

1x Qlech ice block for everyone in your class.

A birthday card from your teacher and classmates.



\$20

A Happy Birthday balloon and sticker for you to keep.

A special birthday song and dance for you, performed by Year 6

Place your order at the front office or online a week prior to your child's birthday for an exciting delivery of a Birthday Bucket to your child's classroom so he/she can celebrate with classmates.

NOTE: Advance booking is required- last minute orders will not be accepted.

Fun Food Friday!

To cool you down and quench your thirst, Year 6 students will be selling Zooper Doopers at recess each Friday during Term 1.

Zooper Doopers

\$1.00 each



NAPLAN Online

This year NAPLAN Online is being completed from the 15 March for Year 3 and Year 5 students. Please see the information below regarding NAPLAN Online.

NAPLAN Information for parents and carers

2023

Why do students do NAPLAN?

NAPLAN is a national literacy and numeracy assessment that students in Years 3, 5, 7 and 9 sit each year. It is the only national assessment all Australian students have the opportunity to undertake.

As students progress through their school years, it's important to check how well they are learning the essential skills of reading, writing and numeracy.

NAPLAN assesses the literacy and numeracy skills that students are learning through the school curriculum and allows parents/carers to see how their child is progressing against national standards and over time.

NAPLAN is just one aspect of a school's assessment and reporting process. It doesn't replace ongoing assessments made by teachers about student performance, but it can provide teachers with additional information about students' educational progress.

NAPLAN also provides schools, education authorities and governments with information about how education programs are working and whether young Australians are achieving important educational outcomes in literacy and numeracy.

Your child will do the NAPLAN tests online

Schools have transitioned from paper-based to computer-based assessments. All Year 3 students will continue to complete the writing assessment on paper.

Online NAPLAN tests provide more precise results and are more engaging for students. One of the main benefits is tailored (or adaptive) testing, where the test presents questions which may be more or less difficult depending on a student's responses.

Tailored testing allows a wider range of student abilities to be assessed and measures student achievement more precisely. A student's overall NAPLAN result is based on both the number and complexity of questions they answer correctly. Your child should not be concerned if they find questions challenging; they may be taking a more complex test pathway.

What does NAPLAN assess?

NAPLAN assesses literacy and numeracy skills that students are learning through their regular school curriculum.

Students sit assessments in writing, reading, conventions of language (spelling, grammar and punctuation) and numeracy. The questions assess content linked to the Australian Curriculum: English and Mathematics.

All government and non-government education authorities contribute to the development of NAPLAN test materials.

To find out more about NAPLAN, visit nap.edu.au.

Participation in NAPLAN

NAPLAN is for everyone. ACARA supports inclusive testing so all students have the opportunity to participate in the national assessment program.

Adjustments are available for students with disability who have diverse functional abilities and needs.

Schools should work with parents/carers and students to identify, on a case-by-case basis, reasonable adjustments required for individual students with disability to access NAPLAN. Adjustments should reflect the support normally provided for classroom assessments.

To help inform these decisions, you may consult the [NAPLAN public demonstration site](#), the [Guide for schools to assist students with disability to access NAPLAN](#), or our [series of videos](#) where parents/carers, teachers and students share their experiences in using NAPLAN adjustments.

In exceptional circumstances, a student with a disability that severely limits their capacity to participate in the assessment, or a student who has recently arrived in Australia and has a non-English speaking background, may be granted a formal exemption.

Your school principal and your local test administration authority can give you more information on adjustments for students with disability or the process required to gain a formal exemption.

What if my child is absent from school on NAPLAN days?

Where possible, schools may arrange for individual students who are absent at the time of testing to complete missed tests at another time during the school's test schedule.

What if my school is closed on NAPLAN days?

Schools with compelling reasons may be given permission to schedule tests after the 9-day test window.

What can I do to support my child?

Students are not expected to study for NAPLAN. You can support your child by reassuring them that NAPLAN is a part of their school program and reminding them to simply do their best. Some familiarisation and explanation of NAPLAN is useful to help students understand and be comfortable with the format of the tests. Teachers will ensure students are familiar with the types of questions in the tests and will provide appropriate support and guidance.

ACARA does not recommend excessive preparation for NAPLAN or the use of services by coaching providers.

See the types of questions and tools available in the online NAPLAN assessments at nap.edu.au/online-assessment/public-demonstration-site.

NAPLAN timetable

The NAPLAN test window is 9 days. This is to accommodate schools that may have fewer devices.

The NAPLAN test window starts on Wednesday 15 March and finishes on Monday 27 March 2023. Schools are advised to schedule the tests as soon as possible within the testing window, prioritising the first week.

How is my child's performance reported?

Individual student performance is shown on a national achievement scale for each assessment. This scale indicates whether the student is meeting expectations for the literacy and numeracy skills needed to participate fully in that year level.

A NAPLAN individual student report will be provided by your child's school later in the year. If you do not receive a report, you should contact your child's school.

How are NAPLAN results used?

- Students and parents/carers may use individual results to discuss progress with teachers.
- Teachers use results to help identify students who need greater challenges or extra support.
- Schools use results to identify strengths and areas of need to improve teaching programs, and to set goals in literacy and numeracy.
- School systems use results to review the effectiveness of programs and support offered to schools.
- The community can see information about the performance of schools over time at myschool.edu.au.

Where can I get more information?

For more information about NAPLAN:

- contact your child's school
- contact your local test administration authority at nap.edu.au/TAA
- visit nap.edu.au

To learn how ACARA handles personal information for NAPLAN, visit nap.edu.au/naplan/privacy.

Test	Scheduling requirements	Duration	Test description
Writing	<ul style="list-style-type: none">• Year 3 students do the writing test on paper (on day 1 only)• Years 5, 7 and 9 writing must start on day 1 (schools must prioritise completion of writing across days 1 and 2 only, with day 2 only used where there are technical/logistical limitations)	Year 3: 40 min Year 5: 42 min Year 7: 42 min Year 9: 42 min	Students are provided with a 'writing stimulus' (sometimes called a 'prompt' – an idea or topic) and asked to write a response in a particular genre (narrative or persuasive writing)
Reading	<ul style="list-style-type: none">• To be completed after the writing test• To be completed before the conventions of language test	Year 3: 45 min Year 5: 50 min Year 7: 65 min Year 9: 65 min	Students read a range of informative, imaginative and persuasive texts and then answer related questions
Conventions of language	<ul style="list-style-type: none">• To be completed after the reading test	Year 3: 45 min Year 5: 45 min Year 7: 45 min Year 9: 45 min	Assesses spelling, grammar and punctuation
Numeracy	<ul style="list-style-type: none">• To be completed after the conventions of language test	Year 3: 45 min Year 5: 50 min Year 7: 65 min Year 9: 65 min	Assesses number and algebra, measurement and geometry, and statistics and probability



The first weeks of school: How to support your child

Although many children settle in relatively quickly, the start of school can cause some children to regress into some separation anxiety. This can result in tears and clinging as you try to leave at school. Separation anxiety is a child's normal fear of being away from their parents or carers. If you feel that your child might feel anxiety at being separated there are tips to help overcome this for the day.

Top tips

- **Make sure your child knows that you will be back**, waiting outside when they finish (or whoever is picking them up).
- **Say goodbye and leave when it is time to go**. Lingering can make it more difficult for your child to part with you and get on with their day.
- **Teachers are expert at looking after children when they begin**. So don't stress too much if you are leaving them with a nervous or upset child.
- **Most children don't worry or cry for as long as you imagine**. They often stop when you leave and are fine.
- **Know that if there is a problem the school will contact you**.

When separation anxiety is a problem

Some children experience separation anxiety that doesn't go away, even with your best efforts. If intense separation anxiety continues for months rather than days, it may be a sign that more support is needed.

If separation anxiety continues and is excessive enough to interfere with normal activities like school and friendships, it may be a sign of a larger problem: separation anxiety disorder.

If you're worried about your child's separation anxiety speak to your child's teacher at preschool or school and work through the situation together.

Matthew Probert

Fathering Project Co-ordinator