



# RIVERBANK PUBLIC SCHOOL

Learning to Live • Living to Learn  
SCHOOL NEWSLETTER • 18 October • TERM 4 WEEK 2

## IMPORTANT DATES

**Term 4**

**Week 2**

**18 October**

**Year 6 Powerchair Football World Cup  
BYOD Information Session**

**20 October**

**PSSA**

**KJL, 2S, 4H, 6L Assembly**

**Week 3**

**23 October**

**Dwarfism Awareness Day**

**27 October**

**World Teacher's Day**

**PSSA**

**1T, 3T, 5K Assembly**

**Week 4**

**30 October**

**Grandparents & Friends Day 1:45pm - 2:30pm  
Dance School Spec Rehearsal**

**2 November**

**Inclusive Education Assembly**

**3 November**

**KC, 2W, Year 4, Year 6 Assembly**

## PRINCIPAL'S REPORT

Welcome to Term 4. I trust that all families enjoyed the opportunity to spend quality time together over the break. Another busy term awaits, and we look forward to a productive term filled with learning and many exciting events.

A warm welcome to 23 new families who have joined our school community this term.

This term we welcome back to school from maternity leave Mrs Lambert, Deputy Principal, Mrs Collard and Mrs Copperfield classroom teachers.

### Remembrance Day Service

Remembrance Day is a day of special significance for all Australians, commemorating the loss of Australian lives in all wars, conflicts and peace operations. Our ceremony will commence at 9:15am on Friday 10 November. All parents are welcome.

### **Hills Public Speaking Regional Grand Final**

Vriha (Year 2), Ayra (Year 3) and Ariana (Year 6) represented Riverbank PS in the Grand Final of the Hills Public Speaking Competition. Their prepared and impromptu speeches were exceptional.



### **Colour Fun Run**

Our Colour Run was spectacular! Congratulations to all our students for their have a go attitude. It certainly was a colourful blast! My sincere thanks to all families and friends who made donations. As a community, we raised an exceptional amount of \$60 100.

Congratulations to the classes who will be receiving a pizza party for raising the most funds.

- Early Stage 1 – KW
- Stage 1 – 1J, 2R
- Stage 2 – 3N, 4S
- Stage 3 – 5E, 6A
- Inclusive Education – 3-6J

It is an exciting time, as we now focus on the prizes being delivered that you have worked so hard to achieve.

### **Crazy Sock Fundraiser**

Our students participated in a Crazy Sock Day with the aim to raise funds for the Cerebral Palsy Alliance. This is a part of an initiative raised through the student body. We raised \$2150. Shout out to Northwest Community Childcare for raising an additional \$120.



### **Sydney West Area Athletics Carnival**

Congratulations to the Naturelle, Avani, Sienna, Ovi, Neveah and Arnav who proudly represented Riverbank and Ridges at the Sydney West Athletics Carnival last week at Sydney Olympic Park Athletics Centre.

### **Parent eSafety Webinar**

Do your kids know how to be cyber safe? There's still time to register for the eSafety webinar for parents to support young people with navigating safe and respectful online friendships.

Date and time: 18 Oct 7:30 – 8:00 pm.

<https://register.gotowebinar.com/rt/1578436230242883596>





### School Spectacular

Students from our Stage 3 Choir and Dance Troupe have been dedicated to their rehearsals in preparation for 2023 Schools Spectacular at Sydney Olympic Park.

Tickets for the 2023 Schools Spectacular - Fabulous, at Qudos Bank Arena, Sydney Olympic Park, are now on sale. **40 years of Fabulous!**

There are **four shows**:

- **Friday 24 November** at 11am and 7pm
- **Saturday 25 November** at 1pm and 7pm

It is a wonderful event for the whole family. The atmosphere of Schools Spectacular must be seen to be believed! **Visit the official *TICKETEK* website for tickets** - [Ticketek website](https://www.ticketek.com.au/schools-spectacular)



### Yug – Chess Competition

Congratulations to Yug (2J) who recently won the Kids Enrichment Expo 6-12 years Chess Competition. We are very proud of Yug's achievement.



### **Grandparents Day Afternoon**

Grandparents Day 2023 is celebrated in Australia on the last Sunday in October. It is a special occasion that celebrates grandparents, grand-friends, relatives, and those who generally take on the role of a grandparent within their family or community. It is a beautiful time to celebrate those older members of the family for all that they do. Grandparents Day gives us a chance to make a special effort in letting our older relatives know just how much they mean to us. It is that moment to take a pause and give thanks for the contributions these wonderful family members make to our lives, our families, and our communities.

**This year we are welcoming our grandparents into classrooms on Monday 30 October from 1:45-2:30pm.**



### **Australian Girls Choir (AGC) Open Day**

**Experience the magic of the Australian Girls Choir at Open Day. AGC are delighted to invite girls who are at school in 2024 to attend their November Open Day.**

Join AGC for a complimentary class, meet their lovely tutors and experience what it's like to be a part of the Australian Girls Choir.

Does your daughter love to sing, dance and perform? Look no further than the AGC because they encourage, challenge, and inspire girls as they grow musically and socially in fun and dynamic classes. Your daughter will develop confidence, public speaking and presentation skills, resilience and friendships that will last a lifetime.

AGC November Open Days are available for girls at school in 2024 to attend. Open Days are only offered at selected venue locations; however, the full regular venue list is included below. Attendance is free but places are limited; registration essential to attend. Bookings can be made by completing the Registration Form. <https://ausgirlschoir.com.au/joinagc>

### **Open Classrooms Learning Goal Sharing**

**Student Goal Sharing Tuesday 5 December 8:15am to 8:45am**

We look forward to welcoming parents into classrooms on Tuesday 6 December from 8:15 to 8:45am.

### **2025 Selective High School Information – Year 7 Entry in 2025**

Selective High Schools provide a learning environment designed for academically gifted and high potential students.

For more information go to - [Selective High Schools and Opportunity Classes](#)

Important dates:

9 October 2023 – Applications open

20 November 2023 – Applications close

4 May 2024 – Selective High School Placement Test



### **Operation Art**

Theona (KR), Hrithika (1K), Sargun (4C) and Avani (5E) currently have their Operation Art artwork on display at the 2023 Operation Art exhibition. Congratulations to our exhibiting artists.

The 2023 Operation Art exhibition is still on at Sydney Olympic Park until Sun 29 October, open weekends 10am - 4pm. Don't miss it!

Hrithika's artwork has also been selected as part of the Touring 50 and will become part of the permanent collection at The Children's Hospital at Westmead and tour NSW regional galleries in 2024.



### **Boundary Change and Moving Outside the School Catchment Zone**

Due to the continued and sustained growth in new housing, adjustments to some school intake areas are necessary to ensure the best placement of students and their families. Riverbank Public School's intake area (catchment) has been adjusted effective from Term 2 2023. Please refer to the School Finder <https://schoolfinder.education.nsw.gov.au> for these changes. If your child is already enrolled as a local student based on a previous intake area, they do not have to change schools. You have the choice to keep them at their existing school or move them to the school you are now allocated to.

**If you relocate outside the Riverbank Public School catchment, unfortunately we are unable to enrol younger siblings.**

### **Starting Kindergarten in 2024**

Kindergarten transition program dates held in Term 4.

Thursday 9 November 10am -11am	Parent and Student session
Monday 13 November – Friday 17 November 10am – 11:00am	Students only attend one session in the school hall

### **Key events this term – Save the Dates**

- Year 6 Dinner Thursday 7 December
- Excellence Assemblies -
  1. Monday 4 December Kindergarten, Years 1-3
  2. Wednesday 6 December Years 4-6
- Year 6 Graduation Assembly Friday 15 December 1:30pm
- Last day of school – Friday 15 December

### **Planning for 2024**

I am busy planning in preparation for next year. To allow the school to plan as effectively as possible, we would like those families who know they will not be returning in 2024 to confirm these details as soon as possible. A form has been sent out via School Bytes. If you are aware that your child will return to school late next year, I ask that you confirm these details immediately. It is important for all students to return on day 1 of the new school year. Taking leave at this time of a new school year can have a significant impact on the formation of classes and the school's enrolment audit.

**Please remember the first day of the 2024 school year is Thursday 1 February for Years 1-6 and Monday 5 February for Kindergarten.**

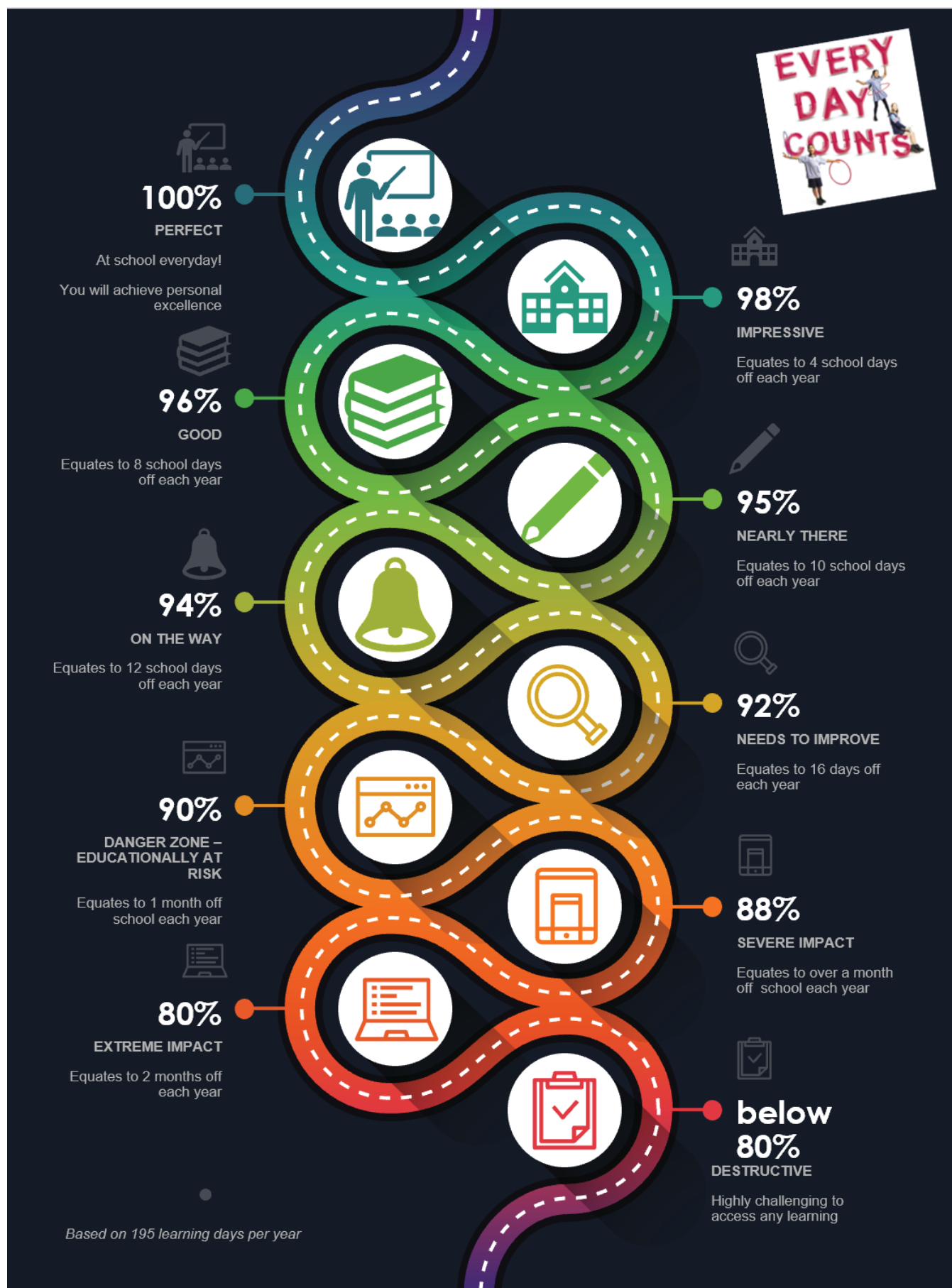
We are anticipating 2200 students, with 83 mainstream classes and 4 Inclusive Education classes.

Have a wonderful fortnight.

**Mrs Jeanie Brown**  
**Principal**



## Attendance Road Map



## In the gate by half past 8

Parents, we are seeing over 100 students arrive late to school every day. Students are required to be at school before the morning bell and in their class lines by 8:45am. Thank you for your ongoing support.

NSW Department of Education

### Why attendance matters

When your child misses school they miss important opportunities to...



Learn



Make friends



Build skills through fun

education.nsw.gov.au



### Days missed = years lost

A day here and there doesn't seem like much, but...

When your child misses just...

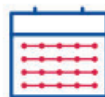
they miss weeks per year

and years over their school life

**1** day per fortnight  
M ~~W~~ T F  
M T W T F

=

**4** weeks



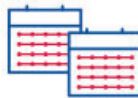
=

Over **1** year missed

**1** day per week  
M ~~W~~ T F  
M T W ~~F~~

=

**8** weeks



=

Over **2.5** years missed

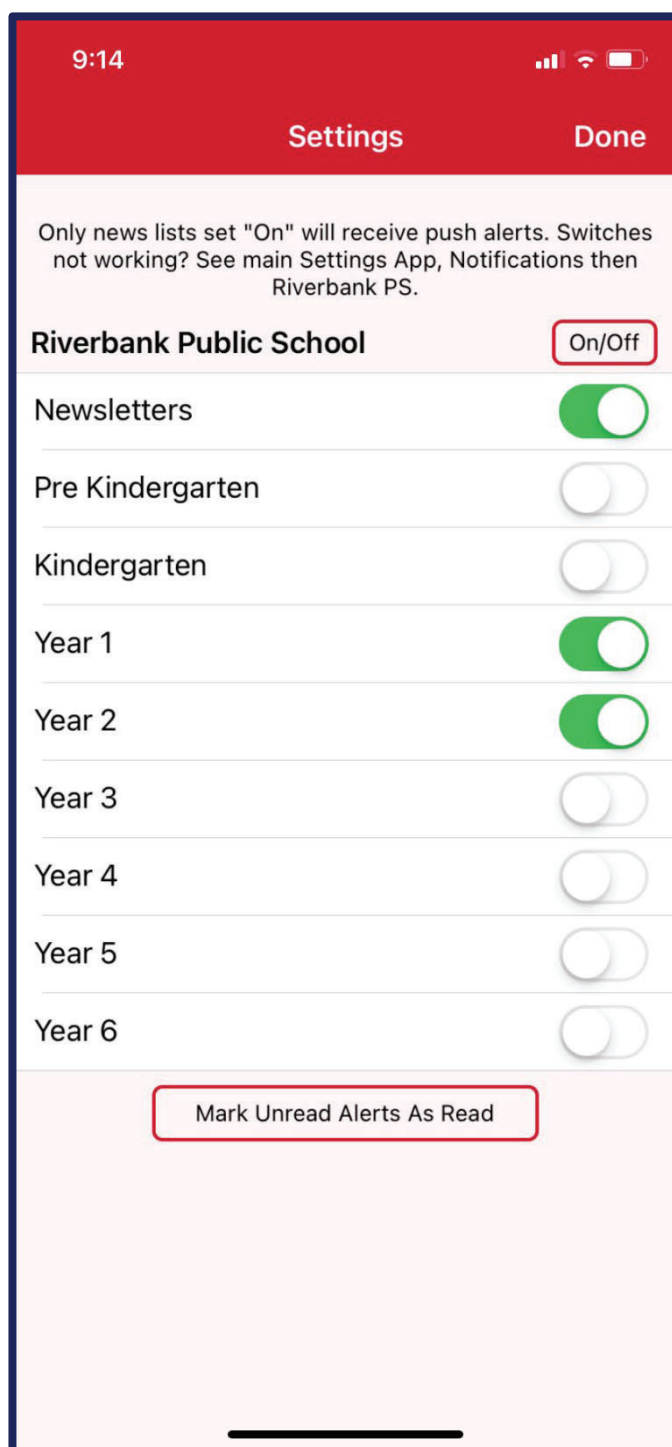
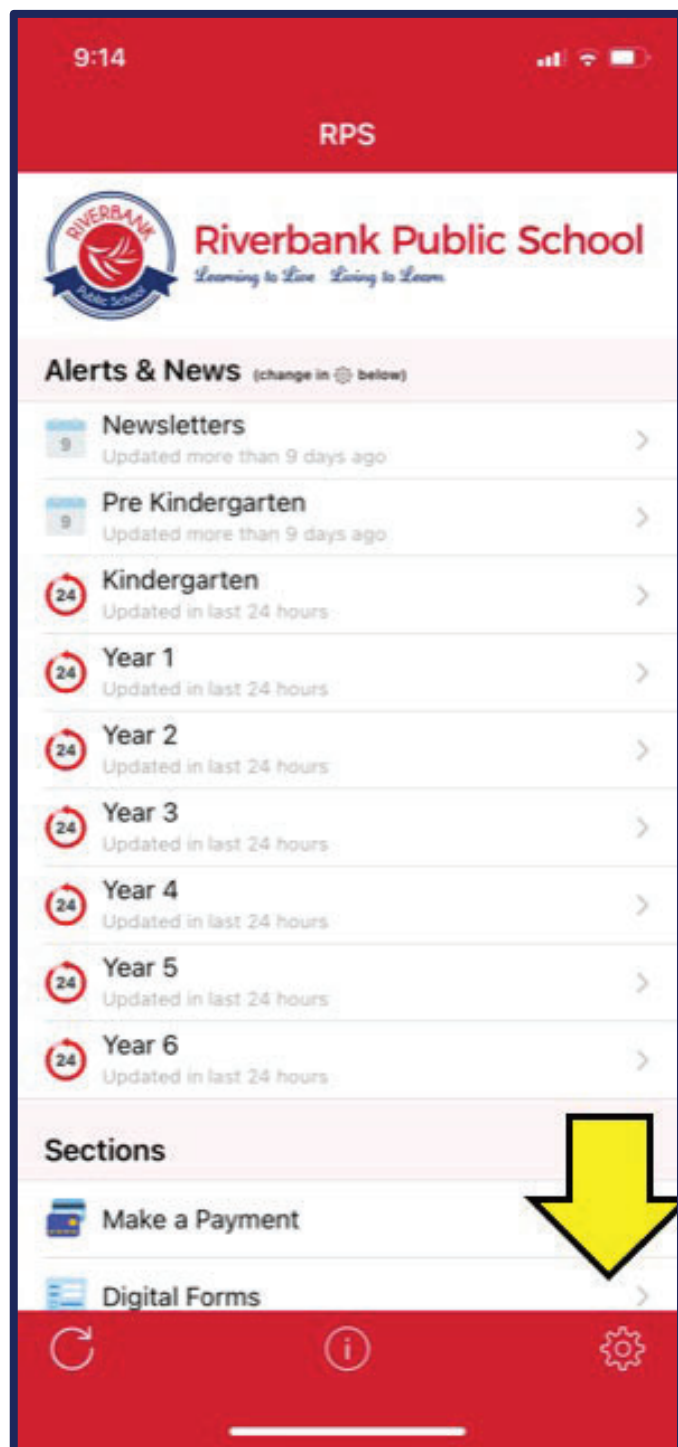
education.nsw.gov.au



### School App Tip

Did you know that you can tailor the push alerts that you receive from our school app to the grade/stage your child is in?

Select the cog wheel on the bottom right-hand corner and select Newsletters and the grade/stage your child is in to ensure that all relevant communication is received.

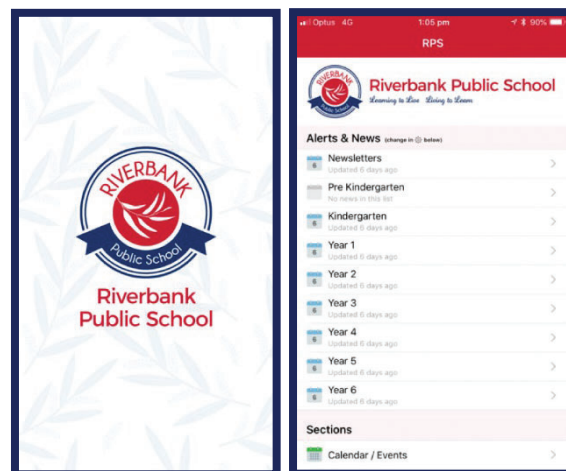


## Parent Communication

We use a variety of platforms to communicate information about upcoming events and highlight the great things that happen at Riverbank Public School.

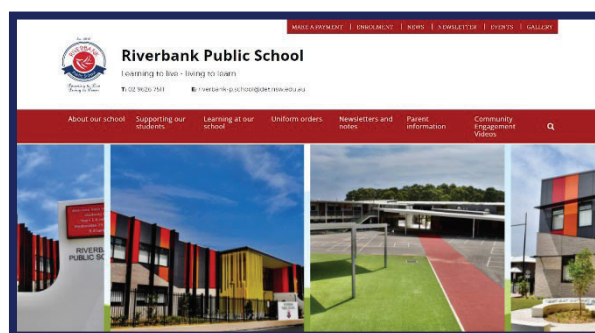
### School Enews App

Important notifications are posted and emailed on the School Enews App. School Enews is a free app available for all mobile devices. Just download the app from the App Store or Play Store by searching for Riverbank Public School. Please ensure that push notifications alerts are turned on so that you can receive information as soon as it is distributed.



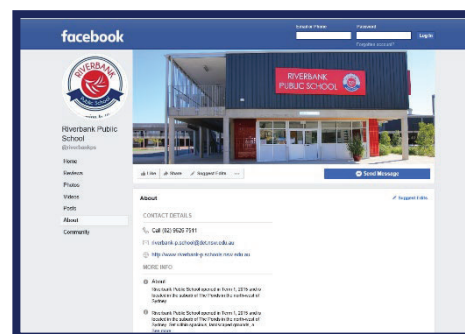
### School Website

Our school website is updated frequently. Some notes such as the Canteen Price List, Uniform Shop and our newsletter are all available online. Our school website is <https://riverbank-p.schools.nsw.gov.au>



### Facebook

Riverbank Public School has its own Facebook page where we celebrate student's achievements. Parents are unable to post any news items but can comment on reports and photos. The page is designed to keep the community up to date regarding all the wonderful things that happen at Riverbank Public School.



### Twitter

In addition to Facebook, Riverbank Public School use Twitter to share events as they happen throughout the school. You can follow us on Twitter [@RiverbankPublic](https://twitter.com/RiverbankPublic).





## **Restorative Practices**

Restorative Practices form the relational basis for Quality Teaching and Learning at Riverbank Public School. Our Restorative Practice Framework, because of its explicit nature, offers a common language and practice capable of fostering healthy relationships.

Student achievement is enhanced through Restorative values being embedded as a way of being and learning together. Our approach fosters individual responsibility and helps develop empathy. Inappropriate behaviour or choices and mistakes can be viewed as an opportunity for insight, learning and development in both the academic and social domains.

The explicit framework is inextricably linked to the Quality Teaching Framework and includes the following sets of questions to be asked by children, teachers, and parents.

When Things Go Wrong.... When Someone Has Been Hurt

- What happened?
- What were you thinking of at the time?
- What have you thought about since?
- Who has been affected by what you have done? In what way?
- What do you think you may do to make things right?
- What did you think when you realised what happened?
- What impact has this incident had on you and others?
- What has been the hardest thing for you?
- What do you think needs to happen to make things right?

The process is empowering as it takes students from the past to the present and gives them hope for the future. It empowers them to make things right and heal any harm that has been done.

A restorative classroom setting is one that values dialogue through an inclusive approach where everyone expects to be heard and through this participatory process, students develop the capacity to learn that emotions are an important and legitimate expression of healthy dialogue. This process helps students to deal with conflict, tensions and difference in respectful ways that engender trust and foster healthy relationships.

## **School Motto**

The school's motto, 'Learning to Live, Living to Learn', reinforces a broad and enriching curriculum, which not only focuses on the development of literacy and numeracy skills but also on the social and emotional wellbeing of the students whilst respecting a culturally diverse community.

## **Riverbank Public School Code of Behaviour**

- We share the voice space by listening actively to others and expressing ourselves confidently.
- We follow instructions by being in the right place, at the right time, doing the right thing.
- We use build-ups by saying encouraging, affirming things to others.
- We keep our hands, feet, and objects to ourselves so that everyone is safe.
- We own our own behaviour because we choose how we behave.

## **Our Help Increase the Peace (HIP) Keys – School Rules:**

Our school values will incorporate the 'Help Increase the Peace Keys' to promote a harmonious, nurturing, and challenging living and learning environment.

The HIP program offers a whole school approach to building relationships through communication, co-operation, trust building and conflict resolution.

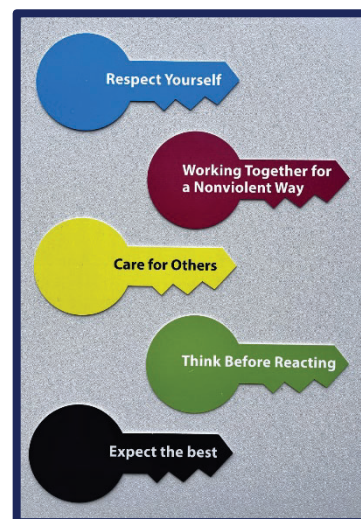
**YELLOW KEY** Care for Others

**GREEN KEY** Think Before Reacting

**BLUE KEY** Respect Yourself

**RED KEY** Work Together for a Non-Violent Way

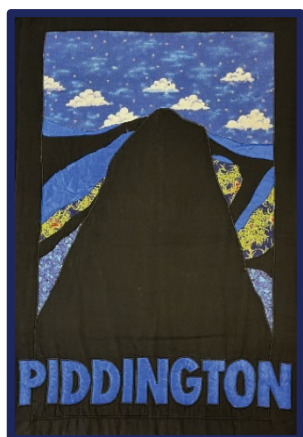
**BLACK KEY** Expect the Best





## Sport Houses

There are Four Sports Houses that reflect the wonderful view the school has of the Blue Mountains.



Team Name	Named After	Famous For	Team Colour
<b>PIDDINGTON</b>	Mount Piddington	One of the highest peaks and is very famous for rock climbing.	<b>BLUE</b> (For the abundance of Eucalypts that give the mountains their blue colour)
<b>TOMAH</b>	Mount Tomah	Is very famous not only for its height but the Botanical Gardens.	<b>GREEN</b> (For the gardens)
<b>BOYCE</b>	Mount Boyce	Is almost the highest point in the mountains and is famous for a major Bureau of Meteorology station.	<b>RED</b> (For the flowering red natives: Waratah, Lambertia or Mountain Devil and Red Grevillia)
<b>YORK</b>	Mount York	Is very famous because it is where Blaxland, Lawson and Wentworth first saw the western plains.	<b>YELLOW</b> (For the viewing of the western plains by the explorers)

## **Sport Update**

### **Ridges Summer PSSA**

Summer PSSA commenced last Friday 13 October.

Summer PSSA will continue each Friday until 17 November.

### **Round 1 Results 13.10.23**

NRL Tag:	Jnrs W 8-6	Snrs W 10-4
Cricket:	Jnrs W 35-8	Snrs W 47-23
AFL:	Jnrs L 13-47	Snrs W 45-28
T-Ball/Softball:	Jnrs L 3-13	Snrs L 1-2

### **2023 Sydney West Athletics Carnival**

Another congratulations to seven Riverbank students who represented Ridges at the Sydney West Athletics Carnival on Thursday of Week 1 at Sydney Olympic Park Athletics Centre. Naturelle, Avani, Sienna, Ovi, Neveah and Arnav showcased their superb athletic skills as well as positive and determined attitudes.

**Peter Lawrence**

**Sports Coordinator**

## Library Update

Each week, students have the opportunity to visit the library to return and borrow books. The Library is open before school on Monday and Tuesdays and after school on Monday, Tuesday, Thursday and Fridays. Please remember your library bags. Thank you to our fantastic Library Perfects that regularly give up their own time to help scan, return, and shelve books during these times.



**Book Club - Issue 7:** The current issue of Book club is now open. The Scholastic Book Club has some wonderful books available to purchase and is a fabulous way to order books for your children while benefiting our school library. The last day for ordering online is Thursday 26 October. Only online ordering is available - no cash purchases please.



### The **EASIEST** way for parents to order and pay for **Book Club!**

Linked **Online** **Ordering** & **Payment** platform

It's easy to order and pay online for your child's **Book Club** order using your credit card. Your order will electronically be linked to your school when you order and pay by **LOOP**.

Also available as an app:



**End of Year borrowing:** The last week for all students borrowing is Friday Week 5. For Year 6, their last day for borrowing is Friday Week 3. Students are still welcome to come and read in our Library during the open times before and after school. All class library sessions will continue until the end of the school year.



Library opening times:



**LIBRARY**

**Opening Hours**

**BEFORE SCHOOL:  
MONDAY & TUESDAY**

**AFTER SCHOOL:  
MONDAY, TUESDAY,  
THURSDAY, FRIDAY**

STUDENTS MUST HAVE A  
LIBRARY BAG TO BORROW

K-2 STUDENTS MUST BE  
ACCOMPANIED BY AN  
ADULT AFTER SCHOOL

Kate Martin  
Teacher Librarian

Kate Martin  
Teacher Librarian



## **RPS Medical Procedures**

### **Prescribed Medication:**

When a medical practitioner has prescribed medication that must be administered during the school day, parents/carers must:

- notify the school.
- provide up to date information as required.
- supply the medication and any 'consumables' necessary for its administration in a timely way.
- complete the Riverbank Public School Medical Permission Note (please see the office for a copy of this note).

The administration of prescribed medication in schools is carried out by staff who volunteer and who are trained. Students must not carry medication unless there is a written agreement between the school and the student's parents/carers.

### **Individual Health Care Plans:**

An individual health care plan must be developed for:

- severe asthma, type 1 diabetes, epilepsy, and anaphylaxis
- any student who is diagnosed as having a condition that may require an emergency response.
- any student who requires the administration of health care procedures

**If your child has any health conditions and does not already have an existing individual health care plan, please contact the office to collect the required forms.**

If your child has an adrenaline auto injector (EpiPen) prescribed by a medical practitioner, an [Action Plan for Anaphylaxis](#) must be completed. If the school does not have a current, Action Plan for Anaphylaxis please have your child's doctor complete one immediately.

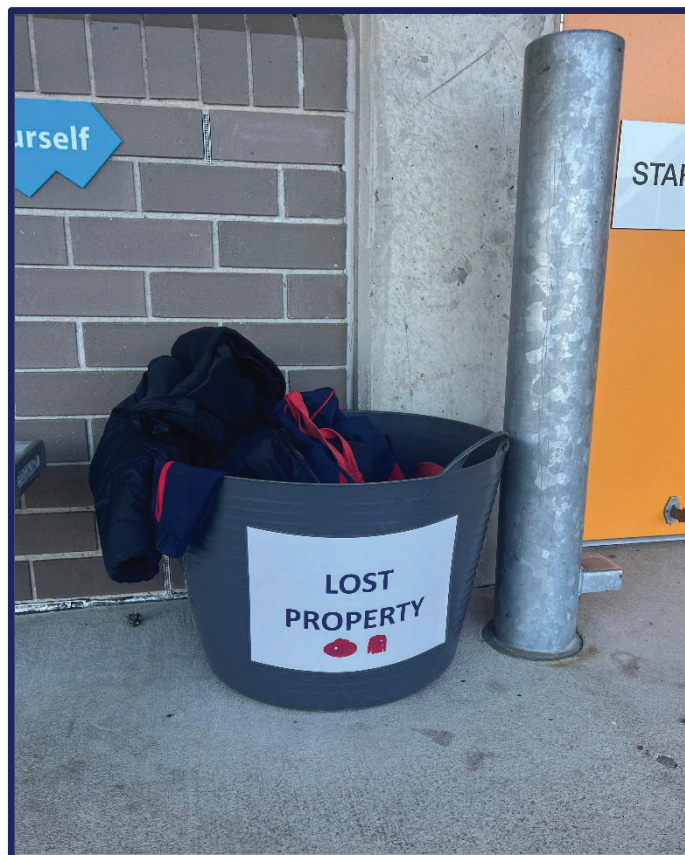
If your child has allergic reactions where no adrenaline autoinjector is prescribed by a medical practitioner, an [Action Plan For Allergic Reactions](#) must be completed. If the school does not have a current Action Plan for Allergic Reactions, please have your child's doctor complete one immediately.

If your child has been prescribed by a medical practitioner as having asthma, an [Asthma Action Plan](#) is required. If the school does not have a current Asthma Action Plan, please have your child's doctor complete one immediately.

# Lost Property

Our lost property tubs are located outside the staffroom and are checked daily by staff. Lost property which is labelled will be returned to students the following day.

Please ensure that all uniforms, lunchboxes, and water bottles are labelled with your child's name.



## Dropping Off and Picking Up students

A 'Kiss and Ride Zone' or 'Drop-off and Pick-up' area utilises existing 'No Parking' zones around schools. In these areas, drivers may stop to drop off or pick up children, however **No Parking** rules apply:

- Maximum stop time is 2 minutes.
- Driver must remain in or within 3 metres of the vehicle.
- Vehicle must not be left unattended.

Additional safety tips for school zones:

- Always drop-off or pick-up your child from the designated area, following the school's procedures.
- Make sure children use the footpath-side door when getting in and out of a car.
- Make sure the hand brake is applied when the vehicle is stationary.
- Never double park
- Never Park across a pedestrian crossing
- Never undertake a U-turn near the school.

Safety Tips for Students:

- Stay buckled up until the vehicle has stopped in the 'Drop-off and Pick-up' area.
- Make sure your school bag and other items are in a safe position, e.g., on the floor.
- Be ready to get out of the car with your belongings when the car has stopped, and you have unbuckled your seatbelt.
- Always get in and out of the backseat of the vehicle through the safety door - the rear footpath-side door.

## No Stopping



**What does it mean?** You cannot stop in this area FOR ANY REASON (including queuing or waiting for space).

**Why is it there?** Keeps clear sight lines between drivers and children/pedestrians.

**Penalty** \$330 + 2 Demerit Points (School Zone)

## No Parking



**What does it mean?** You can stop in a NO PARKING zone for a maximum of two minutes to drop off and pick up passengers. If no spaces are available, you cannot queue on the roadway or in any other zones while waiting for a space. You will need to drive away and park elsewhere, only returning when there is space to pull up.

You must always stay within three metres of your vehicle.

**Why is it there?** To provide a safe place for children/pedestrian set down and pick up.

**Penalty** \$183 + 2 Demerit points (School Zone)

### Bus Zone



**What does it mean?** You must not stop or park in a bus zone for any reason (including queuing or waiting for a space) unless you are driving a bus.

**Why is it there?** To provide a safe place for large buses to set down and pick up school children.

**Penalty** \$330 + 2 Demerit Points (School Zone)

### Pedestrian Crossings

You must not stop within 20 metres before a pedestrian crossing or 10 metres after a crossing unless there is a control sign permitting parking.

**Why is it there?** To ensure that children can be clearly seen by vehicles approaching the crossing.

**Penalty** \$439 + 2 Demerit Points (School Zone).



### Footpaths, Driveways and Nature Strips

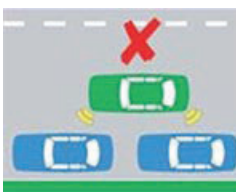


You must not stop on any footpath or nature strip, or even a driveway crossing a footpath or nature strip FOR ANY REASON.

**Why is it there?** You could easily run over a child or force pedestrians onto the road to get around you.

**Penalty** \$183 + 2 Demerit points (School Zone)

### Double Parking



You must not stop on the road adjacent to another vehicle at any time even to drop off or pick up passengers.

**Why is it there?** Double parking forces other cars to go around you cause traffic congestion and reduces the view of drivers and children crossing the road.

**Penalty** \$330 Demerit points (School Zone)

The school is very fortunate to have dedicated volunteers who assist in the safe pick-up of students in this area. Please follow any instruction given to you by these volunteers in order to keep the children safe.



## School Student Travel

### Term 4 2023

#### 2024 school travel applications are now open

Students who need a new or replacement School Opal card or travel pass for 2024 can [apply](#) now. A new application will need to be submitted if they are applying for the first time, or if they are requesting an additional travel entitlement because of a new shared parental arrangement (e.g. joint custody).

Students who change address, school, campus location, have repeated a year or received an expiry notification for their school travel entitlement should [renew or update](#) their details **before the end of term 4**. This will ensure that schools can endorse applications, and travel passes remain valid for the start of the 2024 school year. School Opal card holders will have the changes applied to their existing card.

If a student's distance eligibility has changed based on their grade (i.e. grade two to grade three), the system will automatically update their entitlement if they meet the new criteria. If they do not meet the new [eligibility criteria](#), we will send an expiry notification via email.

Students who have an entitlement approved under a medical condition that is due to expire will receive a notification advising them to re-apply.

[Term Bus Pass](#) holders will receive a notification to re-apply.

Students in the Opal network applying for an Opal card (including a Term Bus Pass) for the first time will receive their Student Opal card at their nominated postal address. Cards will be mailed out from January 2024.

Students living in rural and regional (R&R) areas should receive their travel pass at the start of the new school year from their nominated transport operator. It may come via the school or be sent directly to them at home. **Note:** some R&R operators do not issue travel passes. Students/parents should confirm with their nominated operator if they do not receive a pass.

#### Changes to your bus service provider

Within Greater Sydney, a number of bus service providers have changed their names.

Parents intending to lodge an application for a School Opal card will need to visit [transportnsw.info trip planner](https://transportnsw.info/trip-planner) to obtain the correct bus operator name servicing your area prior to lodging an application.

#### Travel from Term 1 2024

We ask that parents plan ahead and make sure their child knows which service/s to use and has a valid ticket to travel; either a School Opal card or Child/Youth Opal card (within Greater Sydney) or a School Travel Pass (outside Greater Sydney), from the start of the school year.

Applications for 2024 School Student Transport Scheme (SSTS) travel open at the start of Term 4 2023, so parents/students can [apply](#) or [update](#) details early and be ready for the start of the new school year.

Most students using the Opal network will not need a new Opal card and can continue travelling on their existing card each year.

The start of the year is a busy period for local transport operators, and students travelling without a valid ticket make service planning and operations difficult.

We recognise that for some families last minute changes to school enrolments mean they may not have a School Opal card or Travel Pass for the start of term. In the Opal network, we strongly encourage these families to have their children travel with a Child/Youth Opal card until they receive their valid School Opal card. If outside Greater Sydney, parents should contact their [local bus operator](#) to discuss their travel needs.

Bus operators are flexible and understanding, particularly at the start of the school year, and will ensure students can travel safely to and from school. But to best support our operators we encourage all students to have a valid ticket, as early as possible, from the start of the school year.

Students using School Opal cards are also reminded that they must tap on and tap off in line with the [Student code of conduct](#) and [Opal terms of use](#).



Further information can be found at [Plan your trip to school | transportnsw.info](https://transportnsw.info/plan-your-trip-to-school)

Enquiries can be submitted at [Fares, concessions, tickets & top-up feedback | transportnsw.info](https://transportnsw.info/fares-concessions-tickets-top-up-feedback)

# After School Language Class & Creativity Workshop

Fun & creative way to master Chinese language and culture



## North Kellyville PS

Language Class: Monday  
Creativity Workshop: Wednesday  
Time: 3.00-5.30pm

## Beaumont Hills PS

Language Class: Wednesday  
Creativity Workshop: Friday  
Time: 3.00-5.30pm

## William Clarke College

Language Class: Monday & Wednesday  
Time: 3.00-5.30pm

## Riverbank PS

Language Class: Thursday  
Creativity Workshop: Monday  
Time: 2.45-5.15pm

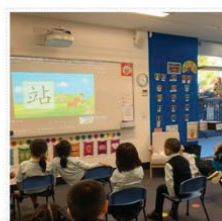
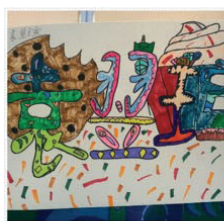
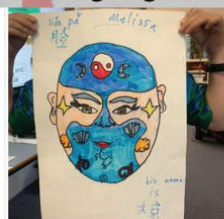
## Kings Langley PS

Language Class: Friday  
Creativity Workshop: Tuesday  
Time: 3.00-5.30pm

\$25 Language Class  
\$32 Creativity Workshop  
\$52 if enrol for both classes

## Sydney Northwest Education Centre

Website: [www.sydneychinese.org.au](http://www.sydneychinese.org.au)  
Email: [snwchinese@gmail.com](mailto:snwchinese@gmail.com)  
Contact: 0491-164-230



**CREATIVE KIDS**  
REGISTERED PROVIDER  
Claim your \$500 voucher here



LEARN CHINESE THROUGH CULTURE & ACTIVITIES





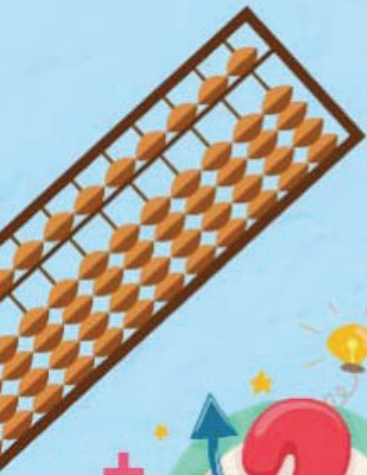
Term - IV

# ABACUS CLASSES

By

## Einstein Kidz Abacus

ABACUS CLASS  
VEDIC MATHS CLASS  
CHESS  
RUBIK'S CUBE



9th October  
to 20th  
December

**SAVE  
\$50**

Creative kids voucher



Age Group:  
4.5 to 15  
years

Call : 1300 75 57 75  
[www.einsteinkidzabacus.com.au](http://www.einsteinkidzabacus.com.au)

Classes at The Ponds  
High School  
Monday: 4:30-5:45 &  
6-7:30pm  
Thursday: 4:30-6pm



**ULTRA**  
**Kidz OSHC**

An Extension  
of NWCC



# BEFORE & AFTER SCHOOL CARE + VACATION CARE

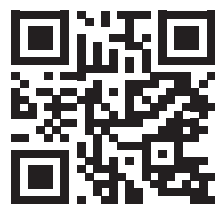
available at selected services

**CONTACT OUR BOOKINGS TEAM TODAY!**

P: [02 8678 0279](tel:0286780279)

E: [bookings@nwcc.com.au](mailto:bookings@nwcc.com.au)

W: [nwcc.com.au](http://nwcc.com.au)



Scan the  
QR CODE  
to visit our  
website

**Northwest**  
Community Childcare  
*happy caring connected*



# FUN IS IN FULL SWING!

## Join Woolworths Cricket Blast

A safe way to have fun and stay active for kids of all abilities.

Find your local club today by scanning the QR code  
Skills Blast for beginner cricketers  
Competition Blast for those who can bat & bowl  
Junior Cricket for those ready to play competitively



**SIGN UP TODAY!**

 **Play Cricket**

PROUDLY  
PRESENTED BY







NSW Department of Education



# Information for applicants

---

For entry to selective high schools  
in Year 7 in 2025







# Ready to apply?

For the latest updates visit: [Selective high schools and opportunity classes](#)

Key dates	
Application website opens	9 October 2023
Application website closes	20 November 2023
Test centre and test authority advice released	25 April 2024
Selective High School Placement Test	9 May 2024
Illness/misadventure requests submitted	16 May 2024
Placement outcome expected to be released	Late-August 2024

## Contents

02	Stages of the placement process	13	What do I need to know about the test?
03	What are selective high schools?	16	How are placement decisions made?
04	Types of selective high schools	17	How do I find out the outcome?
05	Equity placement	20	Selective high schools with Year 7 vacancies in 2025
06	Is selective high school the right fit for my child?	26	Contact us
07	Who can apply?	27	Hyperlinks used in this document
09	How to apply		

**Tip:** Print this page out and stick it to your fridge so you can refer to it regularly.

Applicants should monitor their application dashboard for messages throughout the placement process, from the time of application to the time of placement or any other stages as below.

Stages of the placement process	
What	When
Parents register, verify email, log in and then create, complete and submit the application online	From 9 October to 20 November 2023
Parents request reasonable adjustments for disability when applying, and upload documentation	From 9 October to 20 November 2023
Principals provide information about applicants from their school. Boarder agricultural high schools may invite students to an interview	From 20 November to 9 December 2023
Parents update the primary school the student will attend in 2024 if changed	By 2 February 2024
Parents are sent test centre information and the 'Test authority'	By 25 April 2024
Students sit the Selective High School Placement Test for entry to Year 7 in 2025 in allocated test centres.	On 9 May 2024
'Report of academic merit' due for interstate or overseas students	
Requests for special consideration for illness/misadventure are submitted	By 16 May 2024
Last day to change selective high school choices	16 June 2024
Selection committees meet	In July 2024
Placement outcome expected	Late-August 2024
Parents can submit results enquiries or appeals	Within 7 days of outcome release
Parents accept or decline offers. Schools send enrolment documents to parents who accepted offers	From late-August 2024 to the end of Term 1 2025
Results enquiry outcomes expected to be released	Mid-September 2024
Appeals outcomes are released to parents who submitted appeals	Late-October 2024
Names of students who have accepted offers are withdrawn from any higher choice school reserve lists they may be on	At 3:00pm on 18 December 2024
'Authority to attend' letters are released for students to take to the school on the first day of school in 2025.	Late-January 2025



# What are selective high schools?

Selective high schools cater for high potential and intellectually gifted students.

They help students learn by:

- grouping them with other gifted students
- using special teaching methods so students can learn concepts in more detail and more quickly
- supporting their wellbeing needs.

Most students in selective high schools enjoy learning more when their classmates have similar abilities and interests.

As well as providing for students' academic development, selective high schools also offer a

broad range of classes and extra-curricular activities, such as:

- sports
- creative and performing arts
- music
- and special interest clubs.

Selective high schools are unzoned so you can apply no matter where you live.

Applying for selective high school is a separate process from the one applicable to specialist high schools, such as performing arts or sports high schools.

The Conservatorium High School is a specialist high school but applicants take the Selective High School Placement Test as part of their application to the Conservatorium High School.

# Types of selective high schools

## There are 4 types of selective high schools:

- Fully selective high schools
- Partially selective high schools
- Agricultural high schools
- Aurora College.

### Fully selective high schools

These schools offer only academically selective classes for high-potential and gifted students.

There are 17 fully selective high schools in NSW.

### Partially selective high schools

These schools include classes for academically selective students and also classes for non-selective local students.

Some partially selective high schools do this to better organise the timetable. The school can offer more electives than would be possible if the selective students were kept as a separate group. However, since high-performing students tend to make similar subject level choices, they are quite often still grouped together.

For example, students in the selective classes participate in separate English, mathematics and science classes. They generally join the non-selective students for classes in other subjects.

There are 25 partially selective high schools.

**Note:** Richmond High School - Richmond Agricultural College is a partially selective high school where students study agriculture through the Centre of Excellence in Agricultural Education.

## Agricultural high schools

**Agricultural high schools** are selective high schools which include a focus on the study of agriculture. Some offer a boarding (live-in accommodation) option.

There are 4 fully selective agricultural high schools located throughout NSW:

- Farrer Memorial Agricultural High School – day and boarding places for boys only
- Hurlstone Agricultural High School – day and boarding places for girls and boys
- James Ruse Agricultural High School – day places only for boys and girls
- Yanco Agricultural High School – boarding places only for boys and girls.

Students who live in isolated areas receive extra consideration for boarding places.

## Aurora College

**Aurora College** offers rural and remote students from Years 7 to 10 an opportunity to participate in selective classes for English, mathematics and science through an online 'virtual' high school.

Students connect with their teachers and other students through an online learning environment and also through residential school programs.

Students must be intending to enrol in a **non-selective** rural or remote NSW government high school (their host school) to be considered for entry to Aurora College.

## List of selective high schools

Find out about courses and programs offered by specific selective high schools using the full list of schools at the end of this document. You can also refer to school locations using the [map of selective high schools](#).



# Equity placement

## Creating fair and equitable access for educationally disadvantaged and under-represented students

The **Equity Placement Model** helps to make access to opportunity classes and selective high schools fairer for the following under-represented groups:

- students from low socio-educational advantage backgrounds
- Aboriginal and/or Torres Strait Islanders students
- students from rural and remote locations
- students with disability.

A 2018 Review of selective education access found that these groups were missing out due to unintended barriers to entry.

To help compensate for this, the Equity Placement Model holds a percentage of student places at each school for students from these equity groups to help increase their participation (see the table below).

The application process is the same for all students. Students will be considered for the held equity places only if their placement test results are within



10 percentage points of the placement test result of the lowest regular first round offer for the school (or as determined by the selection committee). This is not a quota system. If there are not enough applications from equity group students who meet the minimum test performance requirements, the held equity places will be offered to general applicants. Parents cannot request allocation to equity groups.

### The percentage of held places for each equity group

Equity group	% of places held
Students from low socio-educational advantage backgrounds	10%
Aboriginal students	5%*
Rural and remote students	2.5%
Students with disability	2.5%

\* Extra targeted places for Aboriginal students are available at Alexandria Park Community School, Rose Bay Secondary College and Tempe High School.

# Is selective high school the right fit for my child?

## What does high-potential and intellectually gifted mean?

High-potential students are those whose potential **exceeds** that of students of the same age.

Gifted students are those whose potential **significantly exceeds** that of students of the same age.

This could be in one or more areas, such as:

- intellectual
- creative
- physical
- social-emotional.

## Tips for identifying if your child has high academic potential

Gifted and high-potential students often have some, or all, of the following characteristics, they:

- enjoy learning
- have intense curiosity
- display a good memory
- ask complex questions
- enjoy learning new and often complex ideas or skills
- require fewer repetitions when learning new things
- are creative
- become intensely focused in their area of interest or passion.

Please keep in mind that these traits are only one way to indicate high-potential students. Some high-potential and intellectually gifted students may not act like this, for example, due to lack of opportunity, disability or disadvantage.

Ask your child's teacher if you want advice about whether your child might benefit from attending a selective high school.

Learn more about our support with the department's [High Potential and Gifted Education Policy](#).

## Does my child need to be in an opportunity class to get into a selective high school?

Not necessarily, as the cohort of students they are compared with is different. Students can improve over the time since they applied for opportunity class placement.

Many high potential and gifted students applying for selective schools did not apply for opportunity class placement. Not all students from opportunity classes are successful for selective high school entry.

There are more than twice as many Year 7 places in selective high schools as there are Year 5 places in opportunity classes and they may be located in different areas.



# Who can apply?

## Parents can apply if their child is:

- enrolled in a NSW government primary school
- enrolled in a NSW non-government primary school
- enrolled in an interstate or overseas school – if they expect to meet residency requirements by the time offers are made, and they will live in NSW by the start of Term 1, 2025; or
- home schooled in NSW.

## Age and school year

Students are usually in Year 5 at the time of applying (2023) and in Year 6 when sitting the test (2024). They are usually born between 1 January 2012 and 1 August 2013. These students will be aged between 11 years and 5 months and 13 years at the time they start Year 7.

If your child is out of the age range or in another school year when you apply, the online application will prompt you to explain why you want your child to skip or repeat a year. Selection committees will carefully check the reasons you give. They may ask for more information or recommend an interview if the child is very young to determine whether there is specific support the school can provide.

Applications from parents who wish to have their child repeat Year 7 may not be accepted even after the student has sat the test.

The selection committee may also:

- decide not to accept students who are much older or younger than the usual age range
- consider that students doing the test for a second time have gained an unfair advantage from their previous experience with the test
- require evidence of consultation with the school principal if seeking acceleration from Year 5 in 2024 to Year 7 in 2025. They may also consider acceleration inappropriate for some students.



## Siblings

Placement in selective high schools is based on academic merit, so the placement of one twin or triplet does not guarantee the placement of another. Siblings of twins or triplets will be offered a place at the same selective high school only if they have a test performance that qualifies for placement.

However, selection committees for **boarders** can give priority to students who have siblings currently attending the same school.

Where older or younger siblings of students placed in a partially selective high school are not in the catchment area for that school, parents may apply directly to the school for out-of-area enrolment at that school. There is no guarantee that their application for out-of-area enrolment of siblings will be successful.

## Residency requirements

Enrolment conditions apply to selective high schools if your child is not an Australian citizen.

Conditions apply to temporary residents, visitors, permanent residents, New Zealand citizens and Norfolk Island residents who enrol in a NSW government school.

Enrolment conditions for each visa subclass are maintained in the [Visa Subclasses and Enrolment Conditions list \(PDF 125 KB\)](#).

Please check the [Selective Education Residency requirements](#) regularly for the latest residency rules governing selective high school enrolment eligibility.

If your child does not currently meet the enrolment conditions but you expect your child's residency status to meet the conditions before initial placement offers are made in August 2024, you may apply and your child can sit the Selective High School Placement Test.

If your child's test outcome qualifies for placement all enrolment conditions must be met before you can be offered a place in a selective high school.

You must be living in NSW at the beginning of the school year of entry to a selective high school.

Offers will be cancelled if based on false or misleading information.

## Temporary living interstate or overseas

You can apply while you are temporarily living interstate or overseas. If possible, your child should be in NSW to sit the test.

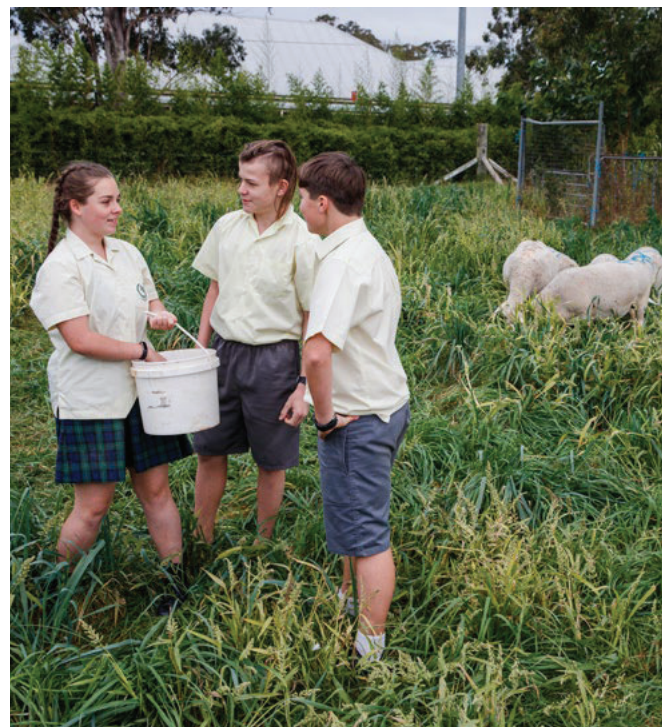
If your child is unable to sit the test in NSW you will need to submit a 'report of academic merit', which includes a Wechsler Intelligence Scale for Children Fifth Edition (WISC V) report, standardised tests of English and mathematics, and a writing sample. The report is due on the day of the test.

Applicants do not need to supply school reports or assessments from their interstate or overseas primary schools.

For more information refer to [Interstate and overseas applicants](#).

If your child is enrolled in a NSW primary school and cannot sit the test because you are temporarily interstate or overseas, you should submit an [illness/misadventure](#) request through your application dashboard within 7 days of the test.

It is important to note that students who sit the test have a much greater chance of placement than students who do not sit the test. This is because only 5% of places at any selective high school are available for students who have been unable to sit the test. For example, a selective high school with 100 vacancies will have only 5 places available for students who have not sat the test.





# How to apply?

Applications are open from 9 October 2023 – 20 November 2023

## Parents must apply by using the online application form

Start your application here:

[shsoc.education.nsw.gov.au](https://shsoc.education.nsw.gov.au)

## Steps to apply

1. Please use one of the following supported browsers: Google Chrome (Windows 10), Firefox (Windows 10), MS Edge (Windows 10), Safari (MacBook pro), Safari (iPad air 2 -iOS 13.6.1), Safari (iPhone 8 -iOS 13.6.1), Samsung Internet (Samsung Galaxy phone).
2. Go to the application site at: [shsoc.education.nsw.gov.au/](https://shsoc.education.nsw.gov.au) and register your own name and email address and create a password. You will receive an email to verify your registration. You have not applied until you have completed the application form and submitted it.
3. Go to the application site and log in using the email address and the password you provided.
4. Create an application.
5. You will be given an application number in the format S24012345.
6. Complete the application in full, ensuring you have ticked the declaration boxes, and select 'submit'. A 'submitted' status will show once you have submitted the application.
7. Upload any relevant documents.
8. Check that you received an email confirming that you have successfully submitted your application.

## Fees

There are no fees for submitting an application.

There are no extra fees for attending a selective high school, unless your child is a boarder. Schools may ask for voluntary contributions and payments for the cost of materials, events or excursions similar to other government high schools.

9. Log in to your application to check all details are accurate and to make changes, including uploading documents, or to send and receive messages.

Select the 3 dots under the 'Action' column to the right of your listed application to select options to view or edit the application details, or later to access online forms for illness/ misadventure or appeals.

Remember to submit again each time you make a change, especially changes to school choices, or there will be no record of it.

10. If you forget your password you can reset it in the application dashboard.

After applying, you will be able to log into your [Application dashboard](#) to change details and send and receive messages.

## Application tips

### Selecting school preferences

You can apply for up to 3 selective high schools in the order you prefer. Think about your choices carefully. List only the schools you would like your child to attend and in your preferred order.

Offers are made on the basis of your order of choice. Where students qualify for more than one school, they will be offered only the highest choice for which they qualify.

Schools do not select students based on whether or not their school was chosen first. Selections for each school are based on the academic merit of the applicants for that school. However, boarder schools may interview students who choose their school first for a potential early offer.

Make sure that all the schools you choose are suitable for your child and that travel times are reasonable. [View a map of selective high schools.](#)

You can learn more about individual schools via the websites listed at the end of this document. Boarder school selection committees consider how far away you live but all other selection committees do not consider your child's travel times or transport needs.

Find out more about [choosing a selective school.](#)

### Change of school choice

You can change your school choices before 16 June 2024 by logging into your application dashboard, selecting new schools and resubmitting.

You cannot change choices after that date unless there are extenuating circumstances, for which you must have documentary evidence. A request for a change of choice after 16 June must be approved by the Unit. It is not usually possible to approve a change of choice after the outcome as places will be filled and reserve lists created.

Requests to change school choices after the outcome will not be approved if made on the basis that your child might have qualified for a different school or because you have changed your mind about the order of choices or have discovered that the school is too far away.

## Parent details

If possible, provide a second email address. Keep your contact details and your child's current school details up-to-date by logging in to your

application dashboard using the email address you registered and the password you used to apply.

If another parent or carer is likely to make decisions or correspond with us about the application, please make sure their name and details are included in the application.

### Who can make enquiries or decisions about my child?

The Unit will communicate only with the parents or carers that you list on the application. If you want other adults to discuss your child's application with the Unit, advise the Unit in writing to authorise others to make enquiries or decisions on your behalf.

If court orders or legal restraints about communication or decisions apply, upload a copy to your application so the Unit can comply with them.

The Unit does not correspond with students or speak to them on the telephone. Please ensure your login details are kept secure and shared only with authorised parents or carers.

### Where parents live at the same address as the student

Record the details of other parents in the application if they are likely to contact the Unit or if they are entitled to make decisions on behalf of the child.

### Where parents live at different addresses

If parents do not live together but have equal shared responsibility for the care of the student, the parent who lives at the same address as the child for most of the time should submit the application.

If the student lives with each parent for equal time, the parent with whom the child is staying at the time should apply. Additional parents can be added to the application and can ask to receive information about the child's application.

Please **do not submit** 2 different applications for the same child. You must apply once only for a student. Duplicate applications will be deleted.



The Unit will not participate in parental disputes and will accept decisions about school choices and placement made by the parent who applied, unless there are court orders stating otherwise.

Where parents cannot agree, the matter will be dealt with according to the department's [Family law guidelines](#).

## Changes to the application

It is your responsibility to check and correct or make changes to your application and resubmit if required. Log in to your application dashboard to check all details are accurate and to add documents or make changes. Some changes, such as requests for adjustments for disability, changes of school choice, submission of illness/ misadventure requests and appeals, will be restricted to certain dates.

## Applying without internet access

If you have no internet access at home please seek the assistance of your child's school to help submit your application. If you have a disability that prevents you from using a computer, please contact the Unit for assistance.

The option to receive postal mail is not available. If you cannot access email regularly, please ask a friend, a family member or your child's school to assist.

## Boarders

There are 3 agricultural high schools with places for boarders, where students live at the school during the school term.

If you want your child to be considered for boarder placement you should select the boarder option, not the day option, and complete the details about distance and travel times on the online application form. The boarder selection committees give higher priority to applicants who live in isolated areas than to applicants who live in other country areas and cities.

Boarder agricultural high schools may invite applicants to an interview to determine readiness for boarding.

There is financial support available that may help you to pay the boarder fees – learn more at [Agricultural high schools](#).

If your child gains a boarder place at an agricultural high school that also has day students and you want your child to change from a boarder place to a day place or vice versa, you can apply through the [Years 8 to 12 application process](#). There is no opportunity to transfer directly from a boarder to a day place.

## Early offers for rural and remote students

Early offers are available for students who live in rural or remote locations and who apply for boarding at:

- Farrer Memorial Agricultural High School
- Hurlstone Agricultural High School
- Yanco Agricultural High School

Applicants still complete the online application. Additionally, parents will need to provide recent academic reports for their child. The school will contact you directly if you are eligible to apply for an early offer and to request academic reports.

The student's academic merit will be considered, along with confirmation that they live in an eligible rural or remote location.

The student may be asked to attend an interview at their chosen agricultural school. This will help the school to get to know the student and their interest in an agricultural boarding school experience.

We anticipate that students will receive early offers from the beginning of 2024.

Students who have received an early offer will still be required to sit the Selective High School Placement Test. Test results help schools to plan for their students' learning needs.

## NSW non-government schools

The selection procedures are the same as for government school students. The only difference is that the Unit advises only government school principals about the students from their school who have applied.

If your child is at a NSW non-government school a 'Principal's page for provision of information about the application' is emailed to you as soon as you submit your application. You must give it to the school within 7 days of applying so the principal can supply the information to the Unit by 27 November 2023.

## Late applications

Late applications may be approved only in serious and well-documented extenuating circumstances or where a school may be short of suitable candidates. Late applications can be requested through the application dashboard for a limited time after the closing date.

## Privacy

In the online application form you will see a privacy notice. It has details of how personal information will be used and disclosed. You will be asked to read the privacy notice and consent to the specific uses of personal information when you apply.

It is a parent's responsibility to ensure details in the application are accurate and updated, especially the contact details, current school and school choices.

## Supporting documents

Please ensure you upload copies of the following supporting documents to your application at the time of applying (or as soon as possible afterwards) if any of these apply to your child:

- If you believe your child requires reasonable adjustments for the test due to a disability, you may need to provide evidence – learn more at [Disability adjustments](#).
- A copy of court orders if they relate to decisions about the child's education or communication about the child.
- An explanation of why the child is older or younger than the usual age range for Year 7, or if he or she is not in Year 6 in 2024.
- Supporting information from the school if intending to repeat the student in Year 6 or 7. Applications from parents who intend repeating Year 7 may not be accepted even if supported by the school and even after the student has sat the test.
- Applications from parents who intend repeating Year 7 may not be accepted even if supported by the school and even after the student has sat the test.
- A 'report of academic merit', required for students living interstate or overseas and who are not sitting the test in NSW. This report must include a full WISC V IQ report, in English, with a reliable full-scale IQ score, standardised reading and mathematics test results and a writing sample. The form to use for sending these can be found at [Interstate and overseas applicants](#).

The Unit may need to confirm your child's Aboriginal or Torres Strait Islander heritage if public school records do not confirm it. Please refer to the Australian Institute of Aboriginal and Torres Strait Islander Studies (AIATSIS) website for information about [Proof of Aboriginality](#).

Boarder agricultural high schools may request reports of academic achievement if interviewing candidates for boarder placement.

You should not send school reports or certificates or other test results unless asked to do so.



# What do I need to know about the test?

---

The Selective High School Placement Test is expected to be held on the morning of 9 May 2024 in designated test centres in NSW.

---

The test in 2024 is paper-based.

The test has multiple-choice questions in reading, mathematical reasoning and thinking skills, as well as a writing test.

The test is designed to measure ability rather than curriculum knowledge. Its purpose is for placement in selective high schools. See our website for more information about the test.

## Authority to sit the test

By 25 April 2024 you will be sent an email telling you that the 'Test authority' letter is available in your application dashboard. The letter tells you where to take your child to sit the test.

Your child must take a printed copy of the Test authority letter to the test.

You will also receive a link to a document 'Test information for parents and students'. This provides details about the test, what your child should bring to the test and how to show answers on the test answer sheet.

Students from the same primary school will usually attend the same test centre. It is usually not possible to change test centres after they are allocated.

You must arrange for your child's travel to and from the test centre.

## Malpractice

The department has robust measures to identify student malpractice in the Selective High School Placement Test. These measures are to ensure that no student receives an unfair advantage or causes disadvantage to other students. If malpractice is found, parents are notified and are given an opportunity to appeal the decision. If the decision is upheld, students are not eligible for placement. Learn more at [Malpractice](#).

## Practice tests

Practice questions for the test are published on the website at [The test](#). Encourage your child to practise answering the questions on the sample answer sheet.

The samples and practice tests are intended to allow students to become familiar with the test format and style of questions. Any results may not reflect the score your child will get in the actual test. The selection committee will not make any decisions based on your child's score on practice items or any other unauthorised tests.

## Reasonable adjustments for disability

Reasonable adjustments are practical arrangements designed to support students to make a fair attempt to show their ability under test conditions, in accordance with the national Disability Standards for Education 2005.

On the application form, parents must disclose information about their child's disability and/or medical condition/s that could affect safety or performance during the test, could cause disruption to the test, or that might require a life-saving response.

You can ask for reasonable adjustments when you apply and upload relevant documentation when prompted in the application form.

Information that parents and schools provide about disability is used for approving reasonable adjustments for the test. It may also be used to determine whether students are included in an equity group as part of the [Equity Placement Model](#).

Information parents provide about disability cannot be used to restrict access to selective high school placement.

The Unit sends advice to invigilators in test centres to ensure the adjustments are implemented.

If you believe your child requires reasonable adjustments for the test you should explain your child's needs in detail in the application form (such as font size if requesting large print) and upload evidence and other relevant documents to your application. You can also add supporting documentation as soon as possible after submitting your application.

The Unit may contact you and/or the school to confirm the adjustments the student has at school. In many cases, if the requested adjustments are already provided at school, they can be arranged for the test. This may include adjustments such as large print test papers, extra time, specific seating and approval to take medications into the test room.

You do not need to arrange permission for your child to bring glasses or asthma medication.

Students should bring these to the test if required. Parents must provide an anaphylaxis kit if the student has anaphylaxis or an asthma action plan if the student has asthma. It is vital that parents let the Unit know about any medical condition that may affect their child's safety in the test so appropriate adjustments can be arranged.

Please advise the Unit if your child has a disability that could possibly result in a disturbance to other students during the test. Separate supervision for testing may be arranged if necessary.

The Unit tries to assist in emergency situations (e.g. a broken arm just prior to the test). In such cases, parents should send a message to the Unit. However, some adjustments requested after the application closing date cannot be guaranteed.

## Preparing your child for the Selective High School Placement Test

Visit [The Test](#) where there are a number of practice tests and other tips. Encourage your child to use the practice tests to practice answering the questions quickly on the sample answer sheet.

The results of practice items do not mean that your child will score the same in the test. Selection committees and appeals panels will not make any decision based on your child's score on practice test items.

The NSW Department of Education does **not** recommend any specific coaching for the Selective High School Placement Test.

There is no credible research that supports the ability of coaching colleges to assist a child who is not already gifted to enter the selective education system.

Parents should be aware that many students who take part in coaching for the test do not gain entry to selective high schools.

## Illness/misadventure: what happens if something goes wrong in the test?

If your child sits the test but is sick or injured or an event affects performance on the test, you must get a medical certificate or other evidence for the test day.

To make a request for special consideration of illness or misadventure affecting test performance, log in to your [application dashboard](#) by 16 May 2024. Go to the 3 dots under the 'Action' column next to the listed application and select the illness/misadventure option to access the form and submit the request. You should upload a file containing relevant evidence.

Learn more at [illness or misadventure](#).

Depending on the circumstances, it is generally better for the student to sit the test and make an illness/misadventure request afterwards. However, students must not attend the test if there is a risk to their health or the health of others, such as in cases of contact with contagious disease. Students with signs of respiratory illness may not be admitted.



Selection committees consider the circumstances and evidence provided by parents when deciding whether to accept illness/misadventure requests. Discretionary activities such as participation in entertainment, sporting events, excursions, camps, or a holiday trip may not be considered sufficient reason to miss the test.

### What if my child is unable to sit the test?

If your child was prevented from sitting the test for a good reason you can make a request for consideration of illness or misadventure based on missing the test.

You will need to provide a medical certificate or other evidence to support the request that covers the test day.

To make a request for special consideration of illness/misadventure based on missing the test, log in to your application dashboard to submit the request by 16 May 2024. The selection committee may later request alternative evidence of academic merit if required.

It is important to note that students who sit the test have a much greater chance of placement than students who do not sit the test. This is because only 5% of places at any selective high school are available for students who have been unable to sit the test. For example, a selective high school with 100 vacancies will have only 5 places available for students who have missed the test.

You **cannot** make an appeal later about illness or misadventure that should have been raised at the time of the test.

# How are placement decisions made?

Students will be placed in order of academic merit based on their test performance in the Selective High School Placement Test.

For some applicants, other evidence of academic merit may be used in the placement process. For example, applicants living interstate or overseas applicants who are not able to be in NSW for the placement test submit a 'report of academic merit' that includes an IQ report.

The **Equity Placement Model** helps to make placement fairer for under-represented student groups.

There is no fixed level of academic merit that a student has to achieve to be placed at a particular selective high school. Students are placed in rank order of academic merit to fill the available vacancies until the reserve lists close at the end of Term 1 of the placement year. The greater the demand for the school, the higher the required academic merit is likely to be.

Selective high schools are also not zoned. The selection committee does not consider travelling times and transport arrangements when offering places, unless you are applying for entry to one of the 3 agricultural selective high schools that take boarders.

## Selection committee

The selection committee makes placement decisions independently, using consistent selection criteria.

The selection committee considers all applicants for the school based on the order of academic merit.

The committee considers:

- how many students to place on reserve lists
- the likely impact of any disability and reasonable adjustments on test performance
- illness/misadventure requests about absence from the test.
- giving priority to isolated students and siblings of enrolled students if applying for boarding at agricultural high schools
- whether an early offer has been given to the student after being interviewed for boarder placement
- whether students outside the usual age range or school year are eligible for placement
- students in the 4 equity groups: low socio-educational advantage students, Aboriginal and/or Torres Strait Islander students, rural and remote students, and students with disability.
- other evidence of academic merit, if necessary
- any other relevant factors brought to their attention.

Based on placement scores and the above considerations, the selection committee determines students to be listed for offers and reserve places according to the number of vacancies at the chosen selective high school.

Students with too many unjustified absences from school will be brought to the attention of the selection committee. The selection committee is reluctant to offer placement to those whose attendance might not allow them to benefit fully from a selective program.



# Your child's outcome

---

The Unit expects to release your child's placement outcome in the application dashboard by late-August 2024.

---

An email alert is sent to parents when outcomes are available.

Your child may be:

- offered a place for one school choice, and/or
- placed on a reserve list for one or more school choices and/or
- unsuccessful for one or more school choices.

If your child is offered a place at one school the lower choice school is shown as 'not applicable'. Declining the higher choice offer, will not activate an offer to the 'not applicable' school.

A 'performance report' shows your child's achievement band in comparison to other students who sat the test. For more information about outcomes and the 'performance report', go to our [Outcome webpage](#). On that page, you'll also find a link to an 'outcome information' document that explains all the terms used and the next steps in the process.

No test scores or alternative equivalent scores are available.

Parents of students found to have engaged in malpractice will be informed prior to the release of placement outcomes.

Parents of students absent from the test and who did not submit an illness/misadventure request will be informed that their child is not eligible for placement.

If you have not received an email about the availability of the placement outcome, please log in to your application portal, read the outcome message and go to the 'View outcomes' option at the 3 dots in the 'Action' column to the right of the listed application. Contact the Unit urgently if you are unable to view your placement outcome.

Some applications are put on hold if further information is required to finalise the outcome. The Unit will contact you if this applies.

There is no minimum fixed level of academic merit required for entry to individual schools. Students are offered placements according to the available vacancies and based on their ranking in order of academic merit.

The Unit sends reports to government primary schools listing the outcome for students who applied. A report is also sent to the student's local high school as well as to high schools accepting out-of-area applications,

## Responding to offers

If you receive an offer, please ensure you respond to the offer, accepting or declining, by the due date. To do so:

- log in to your application dashboard
- go to the 3 dots under the 'Action' column at the right of your listed application
- choose 'View outcomes'
- click on the Accept or the Decline button.

You will see your response recorded in the History section of the Outcomes screen. No confirmation email is sent.

If you do not respond by the due date you will receive a message reminding you to respond. If you fail to respond after this reminder your offer will lapse.

If you do not wish to accept an offer, please decline it as soon as possible so the place can be offered to the next student on the reserve list.

If you have declined an offer and wish to change your mind, please contact the Unit and request reinstatement on the reserve list. There is no guarantee that a place will become available in these circumstances.

## Being on a reserve list

Reserve lists are lists of students whose placement scores are not high enough to gain an initial offer but are high enough to be on a waiting list if vacancies arise.

If the Outcome is showing as 'Reserve' it means your child is on the reserve list (waiting list) for that school (or schools).

If your child is on a reserve list (or lists), you have the option to withdraw your child from the list.

A student remaining on a reserve list is offered a place if his or her position on the list is reached.

After 3:00 pm on 18 December 2024, you will be offered a place from the reserve list only if you have not accepted a place at another selective high school or if you have declined all other offers.

Students cannot be placed on reserve lists for schools which were not listed as choices in their application.

## Reserve bands

If you are on a reserve list you will also be given a reserve band, either: A, B, C, D, E, or F.

Your reserve band is an estimate of when you might receive an offer.

Offer estimates:

A = within 1 month of the outcome notification

B = within 2 months of the outcome notification

C = within 3 months of the outcome notification

D = within 4 months of the outcome notification

E = within 5 months of the outcome notification

F = Offer not likely by the end of the year

Important: These are estimates only. There is no guarantee that you will receive an offer during this time.

We give offer estimates to help you with making your school choices.

Learn more at [Year 7 reserves](#).

## Subsequent offers

Your child can have an offer and also be on reserve lists for one or two of your higher choice schools.

If you get a subsequent offer to a higher choice school, you must either accept or decline the new

offer. If you accept the new offer, the original offer is automatically declined. If your child is on any reserve lists, the Unit will make further offers to your higher choice schools even if you declined an offer to a lower choice school.

If you accept an offer and your child is also on a reserve list, the student can remain on the reserve list until 3:00 pm on 18 December 2024. You must give up either the reserve place or the offer by the date. After this time, students whose parents have not declined their offer will be automatically removed from all higher reserve lists.

## Unsuccessful students

As there is approximately one place for every 4 applicants, not all students can be placed. Be supportive and explain to your child that he or she can be very successful at a comprehensive high school. Not all high-potential and gifted students apply for selective high schools.

Comprehensive high schools implement their own provisions for high-potential and gifted students under the department's High potential and gifted education policy.

Students who are unsuccessful are not eligible to be placed on a reserve list.

## Can I find out about my child's test scores?

No test scores or alternative scores or rankings are released at any stage of the placement process.

The sole purpose of the test is to place students in selective high schools. Test results are not intended for any other purpose.

The Selective High School Placement Test is designed to measure ability. The test's only purpose is to identify students for entry into selective high schools on the basis of academic merit.

The 'performance report' shows how your child performed in comparison to the other students who took the test in that year.

## Writing test results enquiry

The results enquiry is a way for parents to request a review of the marking of their child's Writing test only. If you believe there was an error with your child's test result for the Writing component, you can submit a Writing test results enquiry within 7 days of the outcome release. There will be a processing fee that you will need to pay when requesting a results enquiry.

Please note, the selective high school test marking process includes double marking of the writing component before we report your child's results.

Requesting a Writing test results enquiry may raise or lower a student's test result. The change of a placement outcome rarely occurs following a results enquiry. A results enquiry does not mean that parents receive test scores.

The link to the results enquiry online form can be accessed at [Results enquiry and appeals](#).

The outcome of the results enquiry will be sent to parents within approximately 3 to 4 weeks of the closing date. The decision can be appealed within 7 days of the issuing of the results enquiry outcome.

All other test components are computer-marked twice and include reliability checks to ensure their accuracy, therefore a results enquiry is not available for these test components.

## How do I appeal against the outcome?

You may appeal against the placement outcome, the writing test results enquiry outcome or the malpractice determination. The principal of your child's school may be asked to comment on the grounds for your appeal.

You may also appeal if your child is not yet a permanent resident of Australia but you have proof that permanent residency will be granted by the time offers are made or have extenuating circumstances that would justify setting aside the rule that applies to all applicant.

Appeals about residency or other grounds must be submitted within 7 days of the initial placement outcome being released via the link to the Appeals section in your application dashboard.

Relevant documentary evidence must be uploaded with your appeal by the due date. Late appeals cannot be accepted.

Please read the information about results enquiry and appeals on our website and submit your appeal only if it's based on valid grounds.

Parents will be advised whether or not their appeal is being passed on to the appeals panel.

## Can my offer be cancelled?

If you do not respond to an offer by the due date the Unit will send a message reminding you to respond. If there is no response, the offer will lapse (be withdrawn) and will pass to the next eligible student on the reserve list.

If your child does not satisfy all requirements, such as permanent residency, or does not attend to finalise enrolment on the first day of school without a satisfactory explanation, the offer will be cancelled.

Offers will also be cancelled if they are found to be based on false or misleading information.

## What do I need to do to enrol?

If you accept an offer, the school will send you enrolment forms in late 2024.

You will also receive an 'Authority to attend' letter from the Unit in late-January 2025. Your child will need to present this letter to the school on the first day of the school year.

You will also need to show original documents, such as proof of residency, to the selective high school to complete enrolment.

You will need to meet all other NSW Department of Education enrolment conditions – learn more at [Enrolment](#).

If you need to delay your child's attendance beyond the first day of the school year you must discuss it with the selective high school principal (or message the Unit if you need to negotiate a delay during school holidays) before submitting enrolment forms. The principal may or may not approve the delayed start. You cannot delay enrolment past the first day of Term 2 in the year of entry.

Any extended leave after enrolment must be negotiated with the school principal and is subject to the Department's enrolment policy.

## Transferring your child to another selective high school after enrolment

After enrolment in a selective high school, you cannot transfer to another selective high school.

You may, however, apply for your child to enter another selective high school starting in Years 8 to 12 by using the application form for Years 8 to 12 entry. This form will be published on the Unit's website in late June of the year before entry.

Find out about the process at [Selective high schools - Year 8 to 12](#).

# Selective High Schools with Year 7 vacancies in 2025

You can select up to 3 selective high schools, in order of preference.

## Fully selective — co-educational

School name and address	Contact details and website
Baulkham Hills High School, Windsor Road, Baulkham Hills 2153	Phone: (02) 9639 8699 Web: <a href="http://baulkham-h.schools.nsw.gov.au">baulkham-h.schools.nsw.gov.au</a> Email: <a href="mailto:baulkham-h.school@det.nsw.edu.au">baulkham-h.school@det.nsw.edu.au</a>
Caringbah High School, Willarong Road, Caringbah 2229	Phone: (02) 9524 3859 Web: <a href="http://caringbah-h.schools.nsw.gov.au">caringbah-h.schools.nsw.gov.au</a> Email: <a href="mailto:caringbah-h.school@det.nsw.edu.au">caringbah-h.school@det.nsw.edu.au</a>
Fort Street High School, Parramatta Road, Petersham 2049	Phone: (02) 8585 1620 Web: <a href="http://fortstreet-h.schools.nsw.gov.au">fortstreet-h.schools.nsw.gov.au</a> Email: <a href="mailto:fortstreet-h.school@det.nsw.edu.au">fortstreet-h.school@det.nsw.edu.au</a>
Girraween High School, Gilba Road, Girraween 2145	Phone: (02) 9636 7293 Web: <a href="http://girraween-h.schools.nsw.gov.au">girraween-h.schools.nsw.gov.au</a> Email: <a href="mailto:girraween-h.school@det.nsw.edu.au">girraween-h.school@det.nsw.edu.au</a>
Gosford High School, Racecourse Road, Gosford 2250	Phone: (02) 4325 2048 Web: <a href="http://gosford-h.schools.nsw.gov.au">gosford-h.schools.nsw.gov.au</a> Email: <a href="mailto:gosford-h.school@det.nsw.edu.au">gosford-h.school@det.nsw.edu.au</a>
Northern Beaches Secondary College Manly Campus 138 Abbott Rd, North Curl Curl 2099	Phone: (02) 9905 3982 Web: <a href="http://nbscmanlys-h.schools.nsw.gov.au">nbscmanlys-h.schools.nsw.gov.au</a> Email: <a href="mailto:nbscmanlys-h.school@det.nsw.edu.au">nbscmanlys-h.school@det.nsw.edu.au</a>
Merewether High School Chatham Street, Broadmeadow 2292	Phone: (02) 4969 3855 Web: <a href="http://merewether-h.schools.nsw.gov.au">merewether-h.schools.nsw.gov.au</a> Email: <a href="mailto:merewether-h.school@det.nsw.edu.au">merewether-h.school@det.nsw.edu.au</a>
Penrith High School High Street, Penrith 2750	Phone: (02) 4721 0529 Web: <a href="http://penrith-h.schools.nsw.gov.au">penrith-h.schools.nsw.gov.au</a> Email: <a href="mailto:penrith-h.school@det.nsw.edu.au">penrith-h.school@det.nsw.edu.au</a>
Smith's Hill High School Gipps Street, Wollongong 2500	Phone: (02) 4229 4266 Web: <a href="http://smithshill-h.schools.nsw.gov.au">smithshill-h.schools.nsw.gov.au</a> Email: <a href="mailto:smithshill-h.school@det.nsw.edu.au">smithshill-h.school@det.nsw.edu.au</a>



## Fully selective — male

School name and address	Contact details and website
Normanhurst Boys High School, Pennant Hills Road, Normanhurst 2076	Phone: (02) 9489 1077 Web: <a href="http://normanhurstboys.nsw.edu.au">normanhurstboys.nsw.edu.au</a> Email: <a href="mailto:normanhurb-h.school@det.nsw.edu.au">normanhurb-h.school@det.nsw.edu.au</a>
North Sydney Boys High School, Falcon Street, Crows Nest 2065	Phone: (02) 9955 1565 Web: <a href="http://northsydbo-h.schools.nsw.gov.au">northsydbo-h.schools.nsw.gov.au</a> Email: <a href="mailto:northsydbo-h.school@det.nsw.edu.au">northsydbo-h.school@det.nsw.edu.au</a>
Sydney Boys High School, Moore Park, Surry Hills 2010	Phone: (02) 9361 6910 Web: <a href="http://sydneyhigh.school/">sydneyhigh.school/</a> Email: <a href="mailto:office@sbhs.nsw.edu.au">office@sbhs.nsw.edu.au</a>
Sydney Technical High School, Forest Road, Bexley 2207	Phone: (02) 9587 5899 Web: <a href="http://sydneytech-h.schools.nsw.gov.au">sydneytech-h.schools.nsw.gov.au</a> Email: <a href="mailto:sydneytech-h.school@det.nsw.edu.au">sydneytech-h.school@det.nsw.edu.au</a>

## Fully selective — female

School name and address	Contact details and website
Hornsby Girls High School, Edgeworth David Avenue, Hornsby 2077	Phone: (02) 9476 5711 Web: <a href="http://hornsbygir-h.schools.nsw.gov.au">hornsbygir-h.schools.nsw.gov.au</a> Email: <a href="mailto:hornsbygir-h.school@det.nsw.edu.au">hornsbygir-h.school@det.nsw.edu.au</a>
North Sydney Girls High School 365 Pacific Highway, Crows Nest 2065	Phone: (02) 9922 6666 Web: <a href="http://northsydgi-h.schools.nsw.gov.au">northsydgi-h.schools.nsw.gov.au</a> Email: <a href="mailto:northsydgi-h.school@det.nsw.edu.au">northsydgi-h.school@det.nsw.edu.au</a>
St George Girls High School, Victoria Street, Kogarah 2217	Phone: (02) 9587 5902 Web: <a href="http://stgeorgegi-h.schools.nsw.gov.au">stgeorgegi-h.schools.nsw.gov.au</a> Email: <a href="mailto:stgeorgegi-h.school@det.nsw.edu.au">stgeorgegi-h.school@det.nsw.edu.au</a>
Sydney Girls High School, Anzac Parade, Surry Hills 2010	Phone: (02) 9331 2336 Web: <a href="https://sydneygirl-h.schools.nsw.gov.au">https://sydneygirl-h.schools.nsw.gov.au</a> Email: <a href="mailto:administration@sghs.nsw.edu.au">administration@sghs.nsw.edu.au</a>

## Partially selective — co-educational

School name and address	Contact details and website
Alexandria Park Community School* Park Road, Alexandria 2015  * Includes targeted places for Aboriginal students	Phone: (02) 9698 1967 Web: <a href="http://alexparkcs-c.schools.nsw.gov.au">alexparkcs-c.schools.nsw.gov.au</a> Email: <a href="mailto:alexparkcs-c.school@det.nsw.edu.au">alexparkcs-c.school@det.nsw.edu.au</a>
Armidale Secondary College, Butler Street, Armidale 2350	Phone: (02) 6776 7466 Web: <a href="http://armidale-s.schools.nsw.gov.au">armidale-s.schools.nsw.gov.au</a> Email: <a href="mailto:armidale-s.school@det.nsw.edu.au">armidale-s.school@det.nsw.edu.au</a>
Balmain Campus, Sydney Secondary College, Terry Street, Rozelle 2039	Phone: (02) 9810 0471 Web: <a href="http://balmain-h.schools.nsw.gov.au">balmain-h.schools.nsw.gov.au</a> Email: <a href="mailto:balmain-h.school@det.nsw.edu.au">balmain-h.school@det.nsw.edu.au</a>
Bonnyrigg High School, Elizabeth Drive, Bonnyrigg 2177	Phone: (02) 9823 1184 Web: <a href="http://bonnyrigg-h.schools.nsw.gov.au">bonnyrigg-h.schools.nsw.gov.au</a> Email: <a href="mailto:bonnyrigg-h.school@det.nsw.edu.au">bonnyrigg-h.school@det.nsw.edu.au</a>
Chatswood High School, Centennial Ave, Chatswood 2067	Phone: (02) 9419 3611 Web: <a href="http://chatswood-h.schools.nsw.gov.au">chatswood-h.schools.nsw.gov.au</a> Email: <a href="mailto:chatswood-h.school@det.nsw.edu.au">chatswood-h.school@det.nsw.edu.au</a>
Elizabeth Macarthur High School, Waterworth Drive, Narellan 2567	Phone: (02) 4646 1899 Web: <a href="http://elizabeth-h.schools.nsw.gov.au">elizabeth-h.schools.nsw.gov.au</a> Email: <a href="mailto:elizabeth-h.school@det.nsw.edu.au">elizabeth-h.school@det.nsw.edu.au</a>
Gorokan High School, Goobarabah Ave, Gorokan 2263	Phone: (02) 4393 7000 Web: <a href="http://gorokan-h.schools.nsw.gov.au">gorokan-h.schools.nsw.gov.au</a> Email: <a href="mailto:gorokan-h.school@det.nsw.edu.au">gorokan-h.school@det.nsw.edu.au</a>
Grafton High School, Oliver & Mary Streets, Grafton 2460	Phone: (02) 6642 3355 Web: <a href="http://grafton-h.schools.nsw.gov.au">grafton-h.schools.nsw.gov.au</a> Email: <a href="mailto:grafton-h.school@det.nsw.edu.au">grafton-h.school@det.nsw.edu.au</a>
Karabar High School, Donald Road, Queanbeyan 2620	Phone: (02) 6298 4333 Web: <a href="http://karabar-h.schools.nsw.gov.au">karabar-h.schools.nsw.gov.au</a> Email: <a href="mailto:karabar-h.school@det.nsw.edu.au">karabar-h.school@det.nsw.edu.au</a>
Koorringal High School, Ziegler Avenue, Wagga Wagga 2650	Phone: (02) 6922 5155 Web: <a href="http://kooringal-h.schools.nsw.gov.au">kooringal-h.schools.nsw.gov.au</a> Email: <a href="mailto:kooringal-h.school@det.nsw.edu.au">kooringal-h.school@det.nsw.edu.au</a>
Leichhardt Campus, Sydney Secondary College, 210 Balmain Road, Leichhardt 2040	Phone: (02) 9560 2565 Web: <a href="http://leichhardt-h.schools.nsw.gov.au">leichhardt-h.schools.nsw.gov.au</a> Email: <a href="mailto:leichhardt-h.school@det.nsw.edu.au">leichhardt-h.school@det.nsw.edu.au</a>
Macquarie Fields High School, Harold Street, Macquarie Fields 2564	Phone: (02) 9605 3111 Web: <a href="http://macfields-h.schools.nsw.gov.au">macfields-h.schools.nsw.gov.au</a> Email: <a href="mailto:macfields-h.school@det.nsw.edu.au">macfields-h.school@det.nsw.edu.au</a>

School name and address	Contact details and website
Moorebank High School, Bangalow Avenue, Moorebank 2170	Phone: (02) 9601 3999 Web: <a href="http://moorebank-h.schools.nsw.gov.au">moorebank-h.schools.nsw.gov.au</a> Email: <a href="mailto:moorebank-h.school@det.nsw.edu.au">moorebank-h.school@det.nsw.edu.au</a>
Parramatta High School, Great Western Hwy & Pitt St, Parramatta 2150	Phone: (02) 9635 8644 Web: <a href="http://parramatta-h.schools.nsw.gov.au">parramatta-h.schools.nsw.gov.au</a> Email: <a href="mailto:parramatta-h.school@det.nsw.edu.au">parramatta-h.school@det.nsw.edu.au</a>
Peel High School, 88 Gunnedah Rd, Tamworth 2340	Phone: (02) 6765 7088 Web: <a href="http://peel-h.schools.nsw.gov.au">peel-h.schools.nsw.gov.au</a> Email: <a href="mailto:peel-h.school@det.nsw.edu.au">peel-h.school@det.nsw.edu.au</a>
Prairiewood High School, Prairievale Road, Wetherill Park 2164	Phone: (02) 9725 5444 Web: <a href="http://prairiewoo-h.schools.nsw.gov.au">prairiewoo-h.schools.nsw.gov.au</a> Email: <a href="mailto:prairiewoo-h.school@det.nsw.edu.au">prairiewoo-h.school@det.nsw.edu.au</a>
Richmond High School -Richmond Agricultural College (Day students only -co-educational) Students must study agriculture.  Lennox Street, Richmond 2753  The Richmond Agricultural College operates across two campuses: Richmond High School and Richmond Agricultural College Centre of Excellence, Vines Drive Western Sydney University Hawkesbury Campus.	Phone: (02) 4578 1177 Web: <a href="http://richmond-h.schools.nsw.gov.au">richmond-h.schools.nsw.gov.au</a> <a href="http://richmondagcollege-h.schools.nsw.gov.au">richmondagcollege-h.schools.nsw.gov.au</a> Emails: <a href="mailto:richmond-h.school@det.nsw.edu.au">richmond-h.school@det.nsw.edu.au</a> <a href="mailto:richmondagcollege-h.school@det.nsw.edu.au">richmondagcollege-h.school@det.nsw.edu.au</a>
Rose Bay Secondary College* Hardy Street, Dover Heights 2030  * Includes targeted places for Aboriginal students	Phone: (02) 9301 0300 Web: <a href="http://rosebay-h.schools.nsw.gov.au">rosebay-h.schools.nsw.gov.au</a> Email: <a href="mailto:rosebay-h.school@det.nsw.edu.au">rosebay-h.school@det.nsw.edu.au</a>
Ryde Secondary College, 5 Malvina Street, Ryde 2112	Phone: (02) 9809 4894 Web: <a href="http://rydesc-h.schools.nsw.gov.au">rydesc-h.schools.nsw.gov.au</a> Email: <a href="mailto:rydesc-h.school@det.nsw.edu.au">rydesc-h.school@det.nsw.edu.au</a>
Sefton High School, 41-43 Hector Street, Sefton 2162	Phone: (02) 9644 4800 Web: <a href="http://sefton-h.schools.nsw.gov.au">sefton-h.schools.nsw.gov.au</a> Email: <a href="mailto:sefton-h.school@det.nsw.edu.au">sefton-h.school@det.nsw.edu.au</a>
Tempe High School* Unwins Bridge Road, Tempe 2044  *Includes targeted places for Aboriginal students	Phone: (02) 9558 2336 Web: <a href="http://tempe-h.schools.nsw.gov.au">tempe-h.schools.nsw.gov.au</a> Email: <a href="mailto:tempe-h.school@det.nsw.edu.au">tempe-h.school@det.nsw.edu.au</a>

## Partially selective — male

School name and address	Contact details and website
Blacktown Boys High School, Sunnyholt Road & Fifth Ave, Blacktown 2148	Phone: (02) 9622 1558 Web: <a href="http://blacktownb-h.schools.nsw.gov.au">blacktownb-h.schools.nsw.gov.au</a> Email: <a href="mailto:blacktownb-h.school@det.nsw.edu.au">blacktownb-h.school@det.nsw.edu.au</a>
Granville Boys High School Mary Street, Granville 2142	Phone: (02) 9637 0489 Web: <a href="http://granvilleb-h.schools.nsw.gov.au">granvilleb-h.schools.nsw.gov.au</a> Email: <a href="mailto:granvilleb-h.school@det.nsw.edu.au">granvilleb-h.school@det.nsw.edu.au</a>

## Partially selective — female

School name and address	Contact details and website
Auburn Girls High School, Hunter Street and Braemar Ave, Auburn 2144	Phone: (02) 9649 6949 Web: <a href="http://auburng-h.nsw.edu.au">auburng-h.nsw.edu.au</a> Email: <a href="mailto:auburng-h.school@det.nsw.edu.au">auburng-h.school@det.nsw.edu.au</a>
Blacktown Girls High School, Fifth Ave, Blacktown 2148	Phone: (02) 9831 7577 Web: <a href="http://blacktowng-h.schools.nsw.gov.au">blacktowng-h.schools.nsw.gov.au</a> Email: <a href="mailto:blacktowng-h.school@det.nsw.edu.au">blacktowng-h.school@det.nsw.edu.au</a>

## Fully selective — agricultural

School name and address	Contact details and website
Farrer Memorial Agricultural High School (Male boarding students) 585 Calala Lane, Tamworth 2340	Phone: (02) 6764 8600 Web: <a href="http://farreragri-h.schools.nsw.gov.au">farreragri-h.schools.nsw.gov.au</a> Email: <a href="mailto:farreragri-h.school@det.nsw.edu.au">farreragri-h.school@det.nsw.edu.au</a>
Farrer Memorial Agricultural High School (Male day students) 585 Calala Lane, Tamworth 2340	Same as above
Hurlstone Agricultural High School (Female boarding students) Roy Watts Road, Glenfield 2167	Phone: (02) 9829 9222 Web: <a href="http://hurlstone-h.schools.nsw.gov.au">hurlstone-h.schools.nsw.gov.au</a> Email: <a href="mailto:hurlstone-h.school@det.nsw.edu.au">hurlstone-h.school@det.nsw.edu.au</a>
Hurlstone Agricultural High School (Male boarding students) Roy Watts Road, Glenfield 2167	Same as above



School name and address	Contact details and website
Hurlstone Agricultural High School (Day students -co-educational) Roy Watts Road, Glenfield 2167	Same as above
James Ruse Agricultural High School (Day students only -co-educational) Felton Road, Carlingford 2118	Phone: (02) 9871 7126 Web: <a href="http://jamesruse-h.schools.nsw.gov.au">jamesruse-h.schools.nsw.gov.au</a> Email: <a href="mailto:jamesruse-h.school@det.nsw.edu.au">jamesruse-h.school@det.nsw.edu.au</a>
Yanco Agricultural High School (Female boarding students) 259 Euroley Road, Yanco 2703	Phone: (02) 6951 1500 Web: <a href="http://yancoag-h.schools.nsw.gov.au">yancoag-h.schools.nsw.gov.au</a> Email: <a href="mailto:yancoag-h.school@det.nsw.edu.au">yancoag-h.school@det.nsw.edu.au</a>
Yanco Agricultural High School (Male boarding students) 259 Euroley Road, Yanco 2703	Same as above

## Virtual selective — co-educational

School name and address	Contact details and website
Aurora College* * For rural and remote students (see pg. 5)	Phone: 1300 287 629 Web: <a href="http://aurora.nsw.edu.au">aurora.nsw.edu.au</a> Email: <a href="mailto:auroracoll-h.school@det.nsw.edu.au">auroracoll-h.school@det.nsw.edu.au</a>

# Contact us

Many questions are covered on our website, please check there first for support

The selective high schools placement process for Year 7 entry is administered by the Selective Education Unit.

## Contact us through the application dashboard

As soon as you have registered and then begun your application, you can contact the Unit through your application dashboard. From there you can also send and receive messages and upload documents.

You will receive email notifications when we send you a message through your application dashboard. Check that the emails are not sent to your junk folder and make sure your account is not full.

## Additional contact details

Email: [ssu@det.nsw.edu.au](mailto:ssu@det.nsw.edu.au)

Phone: 1300 880 367

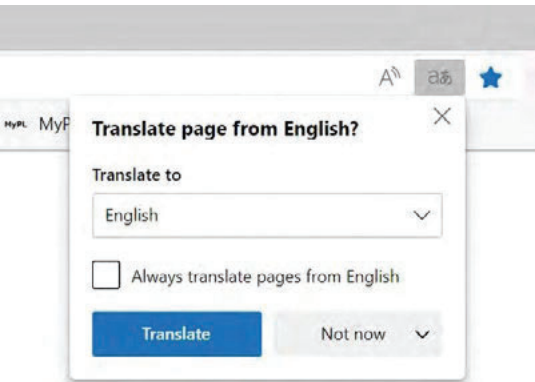
(The phone system provides general updates about key stages of the placement process)

Facebook: Request approval to join our Facebook group.

## Information in other languages

When visiting our website you can use the Google language tool at the top of the page to translate the site into your language (see image at bottom).

Or when using Microsoft Edge you can select your translation language in the search bar:



## Translated fact sheets

On our website you can view and download our Opportunity classes and selective high schools fact sheet in 26 different languages.



# Hyperlinks used in this document

Pp.	Name	URL
5, 12	<a href="#">Agricultural high schools</a>	<a href="https://education.nsw.gov.au/public-schools/selective-high-schools-and-opportunity-classes/year-7/information-for-applicants/agricultural-high-schools">education.nsw.gov.au/public-schools/selective-high-schools-and-opportunity-classes/year-7/information-for-applicants/agricultural-high-schools</a>
10, 15	<a href="#">Application dashboard</a>	<a href="https://shsoc.education.nsw.gov.au">shsoc.education.nsw.gov.au</a>
5	<a href="#">Aurora College</a>	<a href="https://education.nsw.gov.au/public-schools/selective-high-schools-and-opportunity-classes/year-7/information-for-applicants/aurora-college/rural-and-remote-high-schools">education.nsw.gov.au/public-schools/selective-high-schools-and-opportunity-classes/year-7/information-for-applicants/aurora-college/rural-and-remote-high-schools</a>
11	<a href="#">Choosing a selective school</a>	<a href="https://education.nsw.gov.au/public-schools/selective-high-schools-and-opportunity-classes/year-7/information-for-applicants/choosing-a-selective-school">education.nsw.gov.au/public-schools/selective-high-schools-and-opportunity-classes/year-7/information-for-applicants/choosing-a-selective-school</a>
13	<a href="#">Disability adjustments for the test</a>	<a href="https://education.nsw.gov.au/public-schools/selective-high-schools-and-opportunity-classes/year-7/application-process/disability-adjustments">education.nsw.gov.au/public-schools/selective-high-schools-and-opportunity-classes/year-7/application-process/disability-adjustments</a>
19	<a href="#">Enrolment</a>	<a href="https://education.nsw.gov.au/going-to-a-public-school/enrolment">education.nsw.gov.au/going-to-a-public-school/enrolment</a>
6, 15, 16	<a href="#">Equity Placement Model</a>	<a href="https://education.nsw.gov.au/public-schools/selective-high-schools-and-opportunity-classes/general-information/equity-placement-model">education.nsw.gov.au/public-schools/selective-high-schools-and-opportunity-classes/general-information/equity-placement-model</a>
29	<a href="#">Facebook group</a>	<a href="https://facebook.com/groups/772251106301086/">facebook.com/groups/772251106301086/</a>
12	<a href="#">Family law guidelines</a>	<a href="https://education.nsw.gov.au/about-us/rights-and-accountability/legal-issues-bulletins/family-law-guidelines">education.nsw.gov.au/about-us/rights-and-accountability/legal-issues-bulletins/family-law-guidelines</a>
7, 22	<a href="#">High Potential and Gifted Education Policy</a>	<a href="https://education.nsw.gov.au/policy-library/policies">education.nsw.gov.au/policy-library/policies</a>
15	<a href="#">Illness or misadventure</a>	<a href="https://education.nsw.gov.au/public-schools/selective-high-schools-and-opportunity-classes/year-7/the-test/illness-or-misadventure">education.nsw.gov.au/public-schools/selective-high-schools-and-opportunity-classes/year-7/the-test/illness-or-misadventure</a>
9, 13	<a href="#">Interstate and overseas applicants</a>	<a href="https://education.nsw.gov.au/public-schools/selective-high-schools-and-opportunity-classes/year-7/information-for-applicants/interstate-and-overseas-applicants">education.nsw.gov.au/public-schools/selective-high-schools-and-opportunity-classes/year-7/information-for-applicants/interstate-and-overseas-applicants</a>

Pp.	Name	URL
14	Malpractice	<a href="https://education.nsw.gov.au/public-schools/selective-high-schools-and-opportunity-classes/year-7/the-test/malpractice">education.nsw.gov.au/public-schools/selective-high-schools-and-opportunity-classes/year-7/the-test/malpractice</a>
5, 11	Map of selective high schools	<a href="https://tinyurl.com/236zuxxc">tinyurl.com/236zuxxc</a>
29	Opportunity classes and selective high schools fact sheet	<a href="https://education.nsw.gov.au/public-schools/going-to-a-public-school/translated-documents/opportunity-class-and-selective-high-school-fact-sheet">education.nsw.gov.au/public-schools/going-to-a-public-school/translated-documents/opportunity-class-and-selective-high-school-fact-sheet</a>
17	Outcome	<a href="https://education.nsw.gov.au/public-schools/selective-high-schools-and-opportunity-classes/year-7/outcome">education.nsw.gov.au/public-schools/selective-high-schools-and-opportunity-classes/year-7/outcome</a>
13	Proof of Aboriginality	<a href="https://aiatsis.gov.au/proof-aboriginality">aiatsis.gov.au/proof-aboriginality</a>
18	Results enquiry and appeals	<a href="https://education.nsw.gov.au/public-schools/selective-high-schools-and-opportunity-classes/year-7/outcome/appeals">education.nsw.gov.au/public-schools/selective-high-schools-and-opportunity-classes/year-7/outcome/appeals</a>
6	Review of selective education access	<a href="https://education.nsw.gov.au/about-us/strategies-and-reports/our-reports-and-reviews/review-of-selective-education-access">education.nsw.gov.au/about-us/strategies-and-reports/our-reports-and-reviews/review-of-selective-education-access</a>
21	Selective high schools - Year 8 to 12	<a href="https://education.nsw.gov.au/public-schools/selective-high-schools-and-opportunity-classes/years-8-to-12">education.nsw.gov.au/public-schools/selective-high-schools-and-opportunity-classes/years-8-to-12</a>
14, 20	The test	<a href="https://education.nsw.gov.au/public-schools/selective-high-schools-and-opportunity-classes/year-7/the-test">education.nsw.gov.au/public-schools/selective-high-schools-and-opportunity-classes/year-7/the-test</a>
21	Year 7 reserves	<a href="https://education.nsw.gov.au/public-schools/selective-high-schools-and-opportunity-classes/year-7/outcome/year-7-reserves">education.nsw.gov.au/public-schools/selective-high-schools-and-opportunity-classes/year-7/outcome/year-7-reserves</a>
12	Years 8 to 12 application process	<a href="https://education.nsw.gov.au/public-schools/selective-high-schools-and-opportunity-classes/years-8-to-12">education.nsw.gov.au/public-schools/selective-high-schools-and-opportunity-classes/years-8-to-12</a>





We acknowledge the homelands of all Aboriginal and/or Torres Strait Islander people and pay our respect to Country.

**Say hello**

© 2023 NSW Department of Education

 @NSWDepartmentofEducation

 @NSWEducation

 @NSWEducation

[education.nsw.gov.au](https://education.nsw.gov.au)



---

© State of New South Wales through Department of Education 2023. You may copy, distribute and otherwise freely deal with this publication for any purpose, provided that you attribute the Department of Education as the owner.

The information contained in this publication is based on knowledge and understanding at the time of writing and may not be accurate, current or complete. The State of New South Wales (including the NSW Department of Education), the author and the publisher take no responsibility, and

will accept no liability, for the accuracy, currency, reliability or correctness of any information included in the document (including material provided by third parties). Readers should make their own inquiries and rely on their own advice when making decisions related to material contained in this publication.

All images are owned by the NSW Department of Education under the Copyright Act 1968 (Cth) or licensed under the iStock Getty Images Content License Agreement.

# SCHOOL ZONE OFFENCES

## WHAT ARE YOU RISKING? \*



Children are small, harder to see, behave unpredictably and are extremely vulnerable. They need **YOU** to take extra care when driving and parking around school zones.



### NO PARKING

**No waiting.** You have **2 minutes** to drop-off or pick-up.

You must stay within **3 metres** of your vehicle.

PENALTIES FROM  
**\$ 194**  
+2 DEMERIT POINTS



### NO STOPPING

You must **not stop** on a length of road with a **no stopping** sign.

The first **10 metres** from an **intersection** is a no stopping zone.

**Yellow kerb lines** are also a No Stopping zone.

PENALTIES FROM  
**\$ 349**  
+2 DEMERIT POINTS



### BUS ZONE

Only a public bus can stop in a bus zone.

PENALTIES FROM  
**\$ 349**  
+2 DEMERIT POINTS



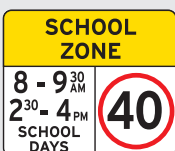
### MOBILE PHONES

Extra fines apply for using a mobile phone in a school zone.

PENALTIES FROM  
**\$ 464**  
+5 DEMERIT POINTS

May be subject to Double Demerits

### SPEEDING OFFENCES



**40km/h** is the limit.

Children are vulnerable, so slow down in school zones.

PENALTIES FROM  
**\$ 200**  
+2 DEMERIT POINTS

May be subject to Double Demerits

### PEDESTRIAN CROSSING

1. In a queue of traffic, **no part of your vehicle can stop** on a pedestrian crossing.
2. Do not let **your child in or out of a vehicle** at a pedestrian crossing as this is a No Stopping zone.

PENALTIES FROM  
**\$ 464**  
+2 DEMERIT POINTS

### DRIVEWAYS & FOOTPATHS

Do not park on or across a driveway or footpath.

PENALTIES FROM  
**\$ 344**  
+2 DEMERIT POINTS

### U TURNS

U turns are **illegal** on or near a **pedestrian crossing** and across a **double white line**.

PENALTIES FROM  
**\$ 349**  
+3 DEMERIT POINTS

### DOUBLE PARKING

Double parking is illegal and is very dangerous in a school zone.

PENALTIES FROM  
**\$ 349**  
+2 DEMERIT POINTS

\*Fines current as of 11 November 2020.

Fines and demerit points are subject to change. For more information check out the NSW Centre for Road Safety website.



**PENRITH**  
CITY COUNCIL



**Blacktown**  
City Council



# SCHOOL ZONE OFFENCES

## WHAT ARE YOU RISKING?



### NO STOPPING

You must **not stop** on a length of road with a **no stopping** sign.



### NO PARKING

**2 minutes** to drop-off or pick-up, stay within **3 metres** of vehicle.



### BUS ZONE

Only a public bus can stop in a designated bus zone.



Help keep our children **safe**

