



# Rouse Hill Public School Newsletter

*Respectful  
Responsible  
Resilient*

Wednesday 31<sup>st</sup> May 2023

Phone: 8824 7330

Email: [rousehill-p.school@det.nsw.edu.au](mailto:rousehill-p.school@det.nsw.edu.au)

Website: [www.rousehill-p.schools.nsw.edu.au](http://www.rousehill-p.schools.nsw.edu.au)

Facebook: [www.facebook.com/rousehillpublic/](https://www.facebook.com/rousehillpublic/)

Rouse Hill PS P&C Email: [rousehillps.pc@gmail.com](mailto:rousehillps.pc@gmail.com)

Download the Rouse Hill PS School Enews app



*Week 6, Term 2*

Calendar Dates	
<b>Week 6</b>	
Friday 2 <sup>nd</sup> June	Winter PSSA Round 4
<b>Week 7</b>	
Tuesday 6 <sup>th</sup> June	Synergy Dance Festival Rehearsal and Concert
Wednesday 7 <sup>th</sup> June	Hills Band Festival Rehearsal and Concert
Thursday 8 <sup>th</sup> June	Synergy Dance Festival Concert
Friday 9 <sup>th</sup> June	Winter PSSA Round 5
<b>Week 8</b>	
Monday 12 <sup>th</sup> June	King's Birthday Public Holiday
Tuesday 13 <sup>th</sup> June	School Spelling Bee Finals
Wednesday 14 <sup>th</sup> June	Sydney West PSSA Regional Cross Country Carnival
Thursday 15 <sup>th</sup> June	Festival of Instrumental Music Concert P&C Meeting, 7pm
Friday 16 <sup>th</sup> June	Winter PSSA Round 6
<b>Week 9</b>	
Tuesday 20 <sup>th</sup> June	Stage 3 Rocks Walking Tour Excursion
Wednesday 21 <sup>st</sup> June	Stage 3 Rocks Walking Tour Excursion
Friday 23 <sup>rd</sup> June	Winter PSSA Round 7 Support Unit Disco, 2:35pm

## *From the Principal and Deputy Principals*

### Allergies and Anaphylaxis

A number of our students have allergies and/or anaphylaxis, a severe, sudden and potentially life-threatening allergic reaction which occurs following exposure to an allergen. Common allergens for anaphylaxis include, but are not limited to:

- Food, e.g., peanuts, eggs, milk, tree nuts (such as hazelnuts or cashews), soy, wheat, fish, shellfish and sesame.
- Insect bites, e.g., bees, wasps, jumper ants.
- Medications e.g., pain killers and antibiotics.
- Latex, e.g., rubber gloves, balloons, swimming caps.

Ways that you can assist our anaphylactic students include:

- Discourage your child from sharing food with others. Please keep in mind that some children may not be diagnosed and may be unaware that they have a food allergy.
- Avoid packing foods containing nuts in lunchboxes, e.g., peanut butter, Nutella.
- Encourage your child to wash or sanitise their hands after eating.

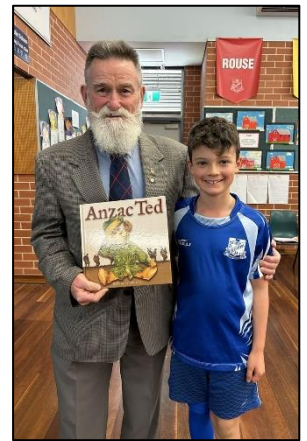
### Contacting the School

Please do not send urgent messages via the school email, please phone the school. Whilst we monitor the school email account regularly, urgent messages are best made via a phone call – 8824 7330.



### Anzac Book Presentation

Stage 2 were delighted to welcome Mr Reece John, who is a member of the RSL, to their assembly last week. Mr John presented 'Anzac Ted' by Belinda Landsberry. Thank you, Mr John. Anzac Ted is described thus: *While several children's picture books cover the world wars, none has ever made the conflict so accessible to children by telling the story of a bear who went to war. Belinda's exquisite watercolour illustrations combine with her rhyming text to create a book that, while perfect for parents and teachers to share with children, is also guaranteed to touch the heart of every adult.* Dominic from 3F was also delighted, as Mr John is his grandfather.



### Road Safety

Please take care when dropping off or picking your child up from school. Whilst the vast majority are patient and careful, each week we are seeing parents/carers engage in unsafe behaviours, such as encouraging their children to get in and out of cars in the middle of the road, not using the pedestrian crossings and getting children to exit or enter cars in No Standing zones.

Rob Jarvis, Rebecca Wallace and Jess Pintado

## PBL Awards – Respectful Responsible Resilient

### Early Stage 1 Award Winners





# PBL Awards – Respectful Responsible Resilient

## Stage 1 Award Winners



# PBL Awards – Respectful Responsible Resilient

## Stage 2 Award Winners





## Class News

Every few days we're sharing some class news with you via our Facebook page, as well as our newsletter. This fortnight it's 1C, 2J and 5/6J's turn.

### 1C

This term, 1C have been busy with their literacy learning during reading groups and InitialLit literacy lessons. During our sport lessons, we have been participating in the Sport in Schools program, developing our gymnastics skills as well as our teamwork skills. It was also really exciting to have some special 'Mum' visitors recently for our Mother's Day open classrooms. Thanks to Miss Lee, 1C have been busy creating Mandarin inspired art. We are wonderful, enthusiastic learners in 1C!



Mrs Caprarelli

### 2J

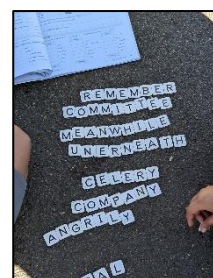
Students in 2J have been enjoying all the hands-on learning activities during our maths lessons. They especially like that they don't have to do too much writing in their books. During these hands-on lessons, students are also learning to work together in pairs or as a team. At times it can create some interesting challenges, but it's great to see them problem solving their way through them. Students also love using the whiteboards to complete their English lessons on a daily basis.



Mrs Johnson and Miss Hartenthaler

### 5/6J

Taking advantage of the beautiful winter weather, 5/6J have been taking some lessons outside the classroom. Aside from our regular fitness activities and our time in the Yarning Circle, we have also engaged in some fun spelling activities, where we have to run to find letters and make our spelling words for the week. It not only helps us learn our words, but gets us running and builds teamwork!



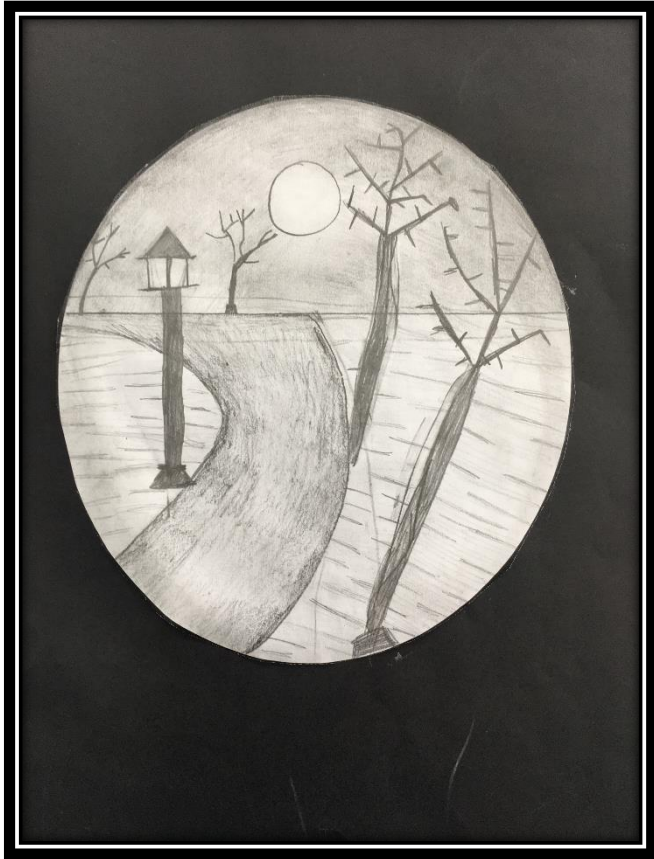
Mr Jackson



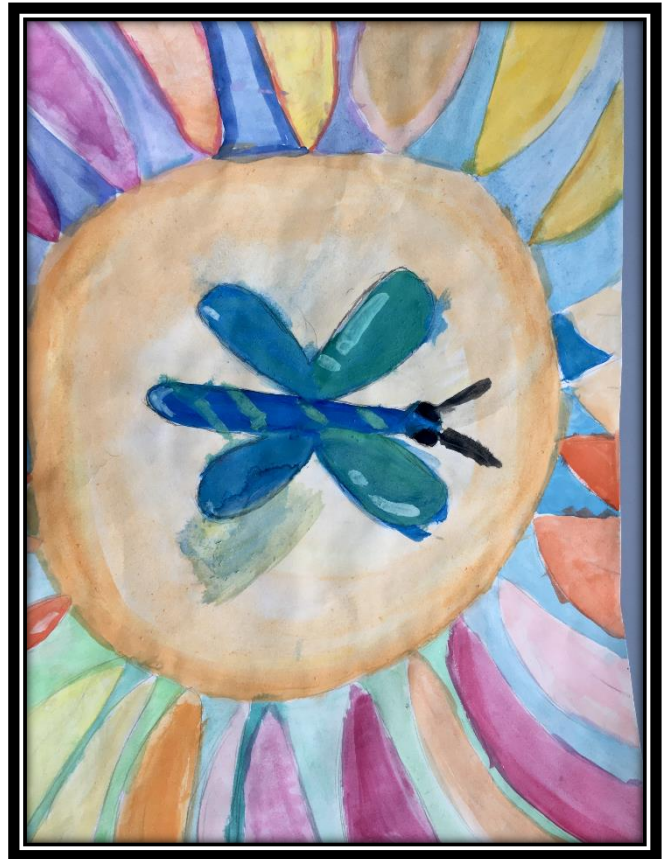
## Operation Art

Our four Operation Art entries are on their way to the NSW DoE Arts Unit. Entries from across NSW will be displayed at Homebush Bay, with a number selected to become part of the permanent collection of The Children's Hospital, Westmead. Congratulations to:

Nusaiba 3W - The Gloomy Path



Isabella-Rose 6V - Gaze of Spring



Elise 5A - Bird of Paradise



Audrey Canlas - Flower of Happiness



Mrs Machan





# We want to work with businesses within our school communities



## Work is available maintaining our schools

School Infrastructure NSW manages a large maintenance program for more than 2,000 schools across all parts of NSW. To do this work, we are looking to engage local businesses, including Aboriginal owned businesses and people.

## We want to go local

We are moving towards direct management of facilities maintenance, bringing in new facilities maintenance contractors and tradespeople to work directly under contract with us.

Why go local? We want to:

- be more responsive to maintenance issues reported by schools.
- ensure we are working with local trades and spending our money in our local communities.
- provide better working conditions for local tradespeople, including faster payment terms.

## Opportunities for Aboriginal businesses

In addition to increasing our engagement of local contractors, we are also seeking to grow the number of local Aboriginal businesses we work with and increase employment opportunities for Aboriginal employees, apprentices and trainees.

We have Aboriginal Senior Program Officers who are able to help Aboriginal businesses, and local contractors who already employ or are looking to employ Aboriginal employees, apprentices, and trainees.

# We want to work with Aboriginal owned businesses.

First Nations Engagement in School Infrastructure program



## School maintenance work is available

School Infrastructure NSW manages a large maintenance program for more than 2,000 schools across NSW. To do some of this work, we are looking to engage local Aboriginal businesses and local businesses that employ Aboriginal employees, apprentices, and trainees.

## Who are we looking for?

We're looking for a variety of maintenance services and trades including:

- Plumbing
- Glazers
- Carpenters
- Gasfitters
- Electrical
- Test and tag
- Lighting
- Pest control
- Construction
- Gutter cleaning
- Equipment construction and maintenance
- Engineering
- Fencing services building and repairs
- Roofing
- and more

## How can I get involved?

Scan the QR code below to register your interest or go to [edu.nsw.link/FNESI](https://edu.nsw.link/FNESI)

## Need help?

We have Aboriginal Senior Program Officers who can assist you with:

- understanding the types of services we are looking for
- how to register your business as an Aboriginal owned business or one who employs Aboriginal people
- connecting with businesses who want to employ Aboriginal apprentices or trainees.



Scan the QR code to register your interest  
or go to  
[edu.nsw.link/FNESI](https://edu.nsw.link/FNESI)

**Contact us:**  
Email an Aboriginal Senior Program Officer  
[enquires.fnesi@det.nsw.edu.au](mailto:enquires.fnesi@det.nsw.edu.au)





Artist impression of the entrance at 100 Tallawong Road, Rouse Hill (subject to change)

## New primary school in Tallawong

### Project update | May 2023

#### Project overview

We are continuing to plan for new primary school needs in Tallawong to support the growing student community. The project will deliver school facilities to cater for the growing population. These will include new general learning spaces, support units, amenities, core facilities and sports courts.

#### Progress summary

The master planning and concept design phases are now complete, and we have begun to develop the next stage of design known as the 'Schematic Design'. In the schematic design phase, we consider input from staff and other stakeholders to finalise the form of buildings and functionality of internal spaces.

#### Next steps

We will be lodging the State Significant Development application for the site of the new primary school at 100 Tallawong Road, Rouse Hill. The application will be exhibited for 28 days for formal feedback from the community. A community information session will be held to provide more information about the design, application submission and where to provide feedback about the proposed project.

#### New primary school in Tallawong - Operations update

The new primary school is being planned to start operating from Day 1 Term 1 2024 in purpose built temporary facilities located at Riverstone Public School. We are working with the leadership team of Riverstone Public School to identify the best way to deliver the temporary facilities and minimise impacts to students. We will be ensuring that these temporary facilities are built with safety and comfort in mind for both school communities.

Temporary schools are a useful tool for many new schools and school upgrades. They allow students to learn in their local community while construction work on permanent facilities takes place. More information about how we build temporary facilities can be found in the following link:

<https://www.schoolinfrastructure.nsw.gov.au/what-we-do/we-build-schools/temporary-schools-support-school-communities-.html>

The department has begun the processes required to recruit a new principal and the consultation process for the new school's name has begun.



## Naming the school

Over the coming months, we will work closely with the Department of Education, your local Director of Education and your local member to deliver the temporary primary school facilities and on planning for the permanent primary facilities.

The first aspect of getting your local primary school up and running is to establish its name. An important part of this process is to provide the community and other stakeholders with the opportunity to submit feedback. You can provide feedback by completing the 'Name your school' survey by clicking on this link: [edu.nsw.link/NamingTallawongPS](https://edu.nsw.link/NamingTallawongPS) or by using the QR code:



## Day 1 Term 1 2024 enrolment and intake area update

The Department of Education has finalised the intake (catchment) area for the new primary school in Tallawong. This intake area was developed in consultation with the Rouse Hill Public School leadership team and the school's Parents and Citizens (P&C).

We expect that the intake area for the school will be on School Finder after the community information session on 9 June 2023 at: [schoolfinder.education.nsw.gov.au](https://schoolfinder.education.nsw.gov.au).

## You are invited: Community information session Thursday 8 June 2023

Join us at the upcoming information session to find out more about the evolution of the design, planning submission and school enrolment timelines. At the drop-in style session, you will be able to submit feedback or questions about the project.

After the session, all information will be uploaded to the project's webpage at [www.schoolinfrastructure.nsw.gov.au](https://www.schoolinfrastructure.nsw.gov.au).

Date: Thursday 8 June 2023

Time: 3 pm to 6:30 pm

Venue: Riverstone Public School Hall, Elizabeth St, Riverstone



RSVP: To ensure that we can speak with all attendees, book interpreters if needed and answer any questions you may have please book your attendance time via [edu.nsw.link/NewTallawongPSInfo](https://edu.nsw.link/NewTallawongPSInfo) or by scanning the QR code above.



For a Translation and Interpreting Service call 131 450 and ask them to call the Department of Education - School Infrastructure NSW on 1300 482 651.



अनुवाद एवं दुभाषिया सेवा के लिए, 131 450 पर फोन करें और उन्हें शिक्षा विभाग - School Infrastructure NSW को 1300 482 651 पर फोन करने के लिए कहें।



अनुवाद आठे दुभाषियादी सेवा लयी 131 450 'ते डोन वडे अडे कुरु' नु सिमिआ दिबाग NSW दे -सकुल बुनिआदी चांवे नु 1300 482 651 'ते डोन वरन लयी वडे।



மொழிபெயர்ப்பு மற்றும் உரைபெயர்ப்பு சேவைக்கு 131 450 -ஐ அழைத்து, 1300 482 651-இல் 'NSW கல்வித் திணைக்களப் பாடமாலை உட்கட்டமைப்புகள்' (Department of Education - School Infrastructure NSW)-ஐ அழைக்குமாறு கேளுங்கள்.

تھریری اور زبانی ترجمے کی سروس کے لیے 131 450 پر کال کریں اور ان سے 1300 482 651 پر ڈیپارٹمنٹ آف ایجوکیشن - سکول انفراسٹرکچر NSW سے کال ملانے کے لیے کہیں۔



للحصول على خدمة الترجمة الخطية والشفوية، يمكن الاتصال على الرقم 131 450 ثم طلب الاتصال بدائرة التربية والتعليم - هيئة البنى التحتية للمدارس في نيو ساوث ويلز على الرقم 1300 482 651.

