



VICTORIA AVENUE PUBLIC SCHOOL

Include • Inspire • Innovate

SCHOOL NEWSLETTER • 17 OCTOBER 2023 • TERM 4 WEEK 6

IMPORTANT DATES

TERM 4

Week 7

Tuesday 21 November

School Spec Rehearsal
Stage 3 Basketball Academy

Wednesday 22 November

School Spec Rehearsal
Stage 3 Concord Challenge

Thursday 23 November

School Spec Rehearsal

Friday 24 November

School Spectacular

Week 8

Week 9

Tuesday 5 December

Year 6 Farwell

Wednesday 6 December

Excellence Assembly

Thursday 7 December

Kindergarten 2024 Interviews

It is hard to believe we are just over halfway through Term 4. Where has the year gone, let alone this term! The school has been a hive of activity and the children are working hard as the year draws to a close.

2023 Excellence Assembly

Our 2023 Excellence Assembly is being held on Wednesday 6 December, commencing at 9:30am. All students K-6 are to wear full school Summer uniform.

2025 Selective High School Information Year 7 Entry in 2025

Selective High Schools provide a learning environment designed for academically gifted and high potential students.

For more information go to - Selective High Schools and Opportunity Classes.

Important dates:

9 October 2023 – Applications open

20 November 2023 – Applications close

4 May 2024 – Selective High School Placement Test

2024 Kindergarten Transition to School

Last week, we welcomed our Kindergarten children and their families who will be joining our school community in 2024. Parents participated in a welcome session in the hall, followed by a tour of the school. Our 2024 Kindergarten students thoroughly enjoyed visiting their classrooms, singing songs, reading stories, playing together, and forming new friendships.

2025 Selective High School Information – Year 7 Entry in 2025

Selective High Schools provide a learning environment designed for academically gifted and high potential students.

For more information go to - Selective High Schools and Opportunity Classes.

Important dates:

9 October 2023 – Applications open

20 November 2023 – Applications close

4 May 2024 – Selective High School Placement Test

School Spectacular

Students from our Dance Troupe have been dedicated to their rehearsals in preparation for the 2023 Schools Spectacular at Sydney Olympic Park.

Tickets for the 2023 Schools Spectacular - Fabulous, at Qudos Bank Arena, Sydney Olympic Park, are now on sale. **40 years of Fabulous!**

**SCHOOLS
SPECTACULAR
2023**

There are **four shows**:

- **Friday 24 November** at 11am and 7pm
- **Saturday 25 November** at 1pm and 7pm

It is a wonderful event for the whole family. The atmosphere of Schools Spectacular must be seen to be believed! ***Visit the official TICKETEK website for tickets.***

Absences and Extended Leave

If your child is absent for any reason from school, could you please ensure that a note, phone call or email to your child's teacher or to the school email is provided stating the date and reason for the absence. This is a legal responsibility and is closely monitored by the Department. An explanation of absence is required within 7 days. If the school has not received an explanation outlining a reason for the absence, a reminder letter will be sent home. If you are taking a long term of absence (5 days or more), for example a holiday during the school term, you must apply for leave via the school's front office and complete a Certificate of Extended Leave. Leave greater than 20 school days will not be approved. Documentation such as travel details, itinerary or flight bookings are needed to issue the extended leave certificate.

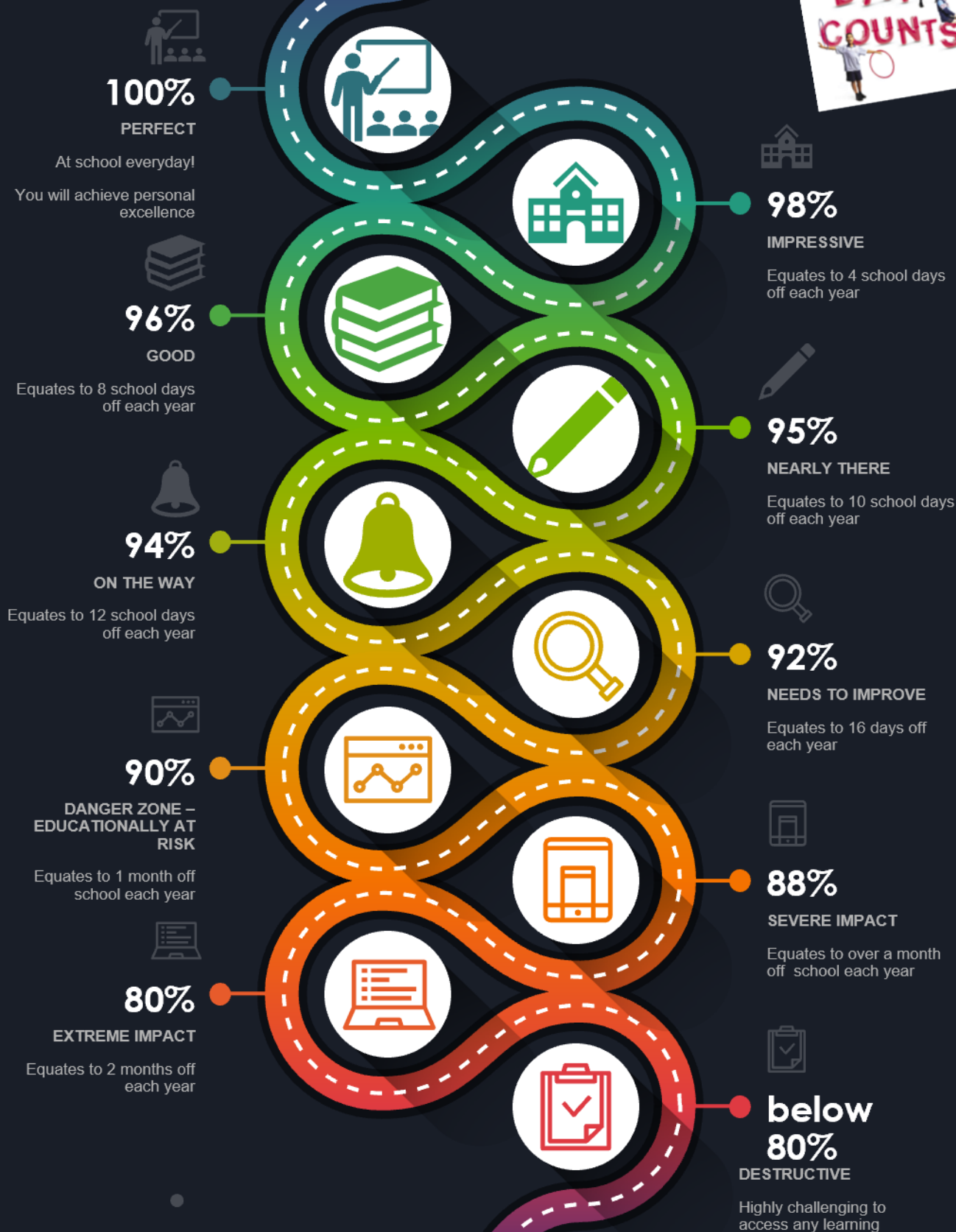
Planning for 2024

I am busy planning in preparation for next year. To allow the school to plan as effectively as possible, we would like those families who know they will not be returning in 2024 to confirm these details as soon as possible. If you are aware that your child will return to school late next year, I ask that you confirm these details immediately. It is important for all students to return on day 1 of the new school year. Taking leave at this time of a new school year can have a significant impact on the formation of classes and the school's enrolment audit.

Have a wonderful fortnight.

Elisa Baker
Principal

Attendance Road Map



Based on 195 learning days per year

Dropping Off and Picking Up students

A 'Kiss and Ride Zone' or 'Drop-off and Pick-up' area utilises existing 'No Parking' zones around schools. In these areas, drivers may stop to drop off or pick up children, however No Parking rules apply:

- Maximum stop time is 2 minutes
- Driver must remain in or within 3 metres of the vehicle
- Vehicle must not be left unattended

Additional safety tips for school zones:

- Always drop-off or pick-up your child from the designated area, following the school's procedures
- Make sure children use the footpath-side door when getting in and out of a car
- Make sure the hand brake is applied when the vehicle is stationary
- Never double park
- Never park across a pedestrian crossing
- Never undertake a U-turn in close proximity to the school.

Safety Tips for Students:

- Stay buckled up until the vehicle has stopped in the 'Drop-off and Pick-up' area
- Make sure your school bag and other items are in a safe position, e.g. on the floor
- Be ready to get out of the car with your belongings when the car has stopped and you have unbuckled your seatbelt
- Always get in and out of the backseat of the vehicle through the safety door - the rear footpath-side door.

No Stopping



What does it mean? You cannot stop in this area FOR ANY REASON (including queuing or waiting for space).

Why is it there? Keeps clear sight lines between drivers and children/pedestrians.

Penalty \$330 + 2 Demerit Points (School Zone)

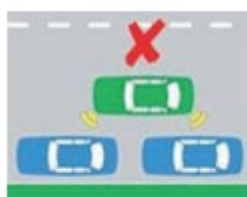
No Parking



What does it mean? You can stop in a NO PARKING zone for a maximum of two minutes to drop off and pick up passengers. If no spaces are available, you cannot queue on the road way or in any other zones while waiting for a space. You will need to drive away and park elsewhere, only returning when there is space to pull up. You must stay within three metres of your vehicle at all times.

Why is it there? To provide a safe place for children/pedestrian set down and pick up.

Double Parking



You must not stop on the road adjacent to another vehicle at any time even to drop off or pick up passengers.

Why is it there? Double parking forces other cars to go around you causing traffic congestion and reduces the view of drivers and children crossing the road.

Penalty \$330 Demerit points (School Zone)

Restorative Practices

Restorative Practices form the relational basis for Quality Teaching and Learning. Our Restorative Practice Framework, because of its explicit nature, offers a common language and practice capable of fostering healthy relationships. Student achievement is enhanced through Restorative values being embedded as a way of being and learning together. Our approach fosters individual responsibility and helps develop empathy. Inappropriate behaviour or choices and mistakes can be viewed as an opportunity for insight, learning and development in both the academic and social domains.

The explicit framework is inextricably linked to the Quality Teaching Framework and includes the following sets of questions to be asked by children, teachers and parents.

When Things Go Wrong.... When Someone Has Been Hurt

- What happened?
- What were you thinking of at the time?
- What have you thought about since?
- Who has been affected by what you have done? In what way?
- What do you think you may do to make things right?
- What did you think when you realised what happened?
- What impact has this incident had on you and others?
- What has been the hardest thing for you?
- What do you think needs to happen to make things right?

The process is empowering as it takes students from the past to the present and gives them hope for the future. It empowers them to make things right and heal any harm that has been done. A restorative classroom setting is one that values dialogue through an inclusive approach where everyone expects to be heard and through this participatory process, students develop the capacity to learn that emotions are an important and legitimate expression of healthy dialogue. This process helps students to deal with conflict, tensions and difference in respectful ways that engender trust and foster healthy relationships.

Our Help Increase the Peace (HIP) Keys

Our school values incorporate the 'Help Increase the Peace Keys' to promote a harmonious, nurturing, and challenging living and learning environment.

The HIP program offers a whole school approach to building relationships through communication, co-operation, trust building and conflict resolution.

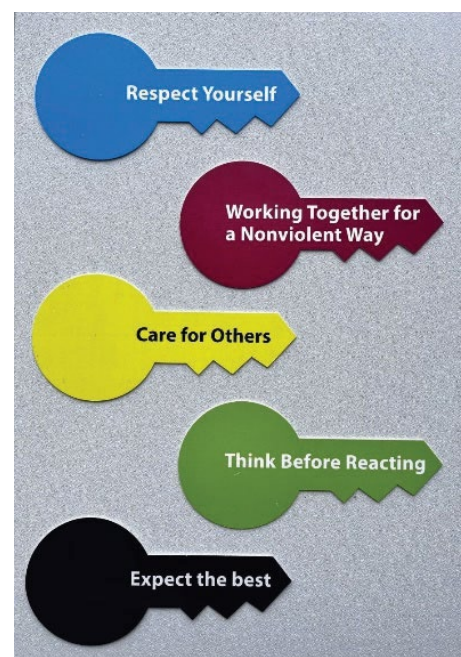
YELLOW KEY Care for Others

GREEN KEY Think Before Reacting

BLUE KEY Respect Yourself

RED KEY Work Together for a Non-Violent Way

BLACK KEY Expect the Best

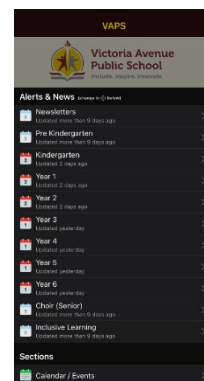


Parent Communication

We use a variety of platforms to communicate information about upcoming events and highlight the great things that happen at Victoria Avenue Public School.

School Enews App

Important notifications are posted and emailed on the School Enews App. School Enews is a free app available for all mobile devices. Just download the app from the App Store or Play Store by searching for Victoria Avenue Public School. Please ensure that push notifications alerts are turned on so that you can receive information as soon as it is distributed.



School Website

Our school website is updated frequently. Our school website is <https://victoriaav-p.schools.nsw.gov.au>



Victoria Avenue Public School

Include, Inspire, Innovate

T: 02 9743 1352

E: victoriaav-p.school@det.nsw.edu.au

[MAKE A PAYMENT](#) [ENROLMENT](#) [NEWS](#) [EVENTS](#) [GALLERY](#)

[About our school](#)

[Supporting our students](#)

[Learning at our school](#)

[Parents and citizens association](#)

[Newsletters, Notes and Sentral](#)

[Extracurricular Activities](#)

[Contact us](#)



Facebook

Victoria Avenue Public School has its own Facebook page where we celebrate student achievements. Parents are unable to post any news items but can comment on reports and photos. The page is designed to keep the community up to date regarding all the wonderful things that happen at Victoria Avenue Public School.



Victoria Avenue Public School

Create @Username · Elementary School

[Edit Send Message](#)

[Home](#) [Services](#) [Photos](#) [Videos](#) [More](#)

[Promote](#)

[Search](#)

[More](#)



VICTORIA AVENUE PUBLIC SCHOOL

SUMMER PARTY

END OF YEAR CELEBRATION

THURSDAY 14 DECEMBER

WEAR YOUR SWIMMING COSTUMES UNDER SPORTS UNIFORM
BRING A TOWEL, SPARE UNDERWEAR IN A PLASTIC BAG
PLEASE LABEL ALL ITEMS

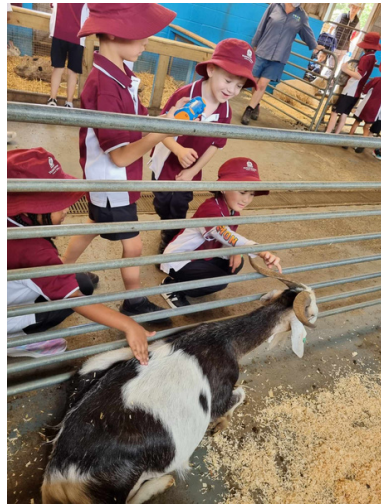
KINDERGARTEN

CALMSLEY HILL FARM EXCURSION

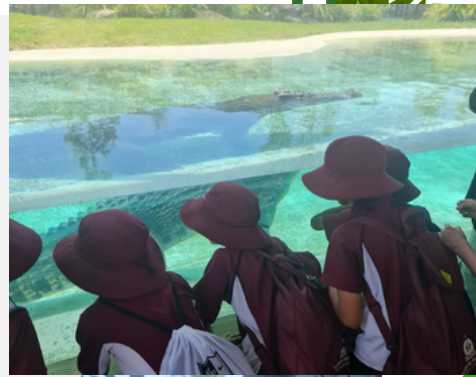
Kindergarten students went on an exciting adventure to Calmsley Hill Farm on Wednesday. Students were able to see animals big and small including pigs, geese and chicks. They learned from the knowledgeable farmers that these animals provide both food and clothing. They even had the chance to milk cows! At the farmyard nursery, students were keen to pet friendly sheep and goats. In the garden, students were shown a variety of plants including those that give us food like the spiky pineapple plant.

With bellies full from lunch, students watched a fascinating stock whip demonstration and some even had a go at making the loud cracking sound. Then, a sheepdog showcased the way he herds the woolly sheep. The day ended with a sheep shearing show before a sleepy bus ride back to school.





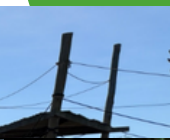
STAGE 1 ZOO



Science

ON TUESDAY STAGE 1 WENT TO SYDNEY ZOO.

IN SCIENCE WE ARE LEARNING ABOUT LIVING AND NON-LIVING THINGS. WE EXPLORED THE ZOO LOOKING AT DIFFERENT ANIMALS AND THE DIFFERENT THINGS THEY NEED TO SURVIVE.



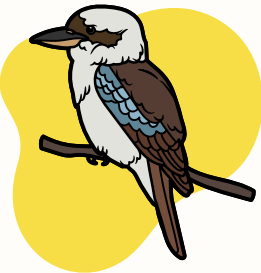
MEET HUNTER THE BLUE TONGUE LIZARD

WE ALL WERE ENGAGED IN MAKING A HOME FOR HUNTER. THE SHELTER BRIEF THAT HUNTER NEEDED WAS

1. A PLACE FOR HIM TO SUN BAKE
2. A SHELTER TO FIT HIS WHOLE BODY
3. SAFE FROM PREDATORS

HUNTER THEN TESTED OUT OUR SHELTERS!

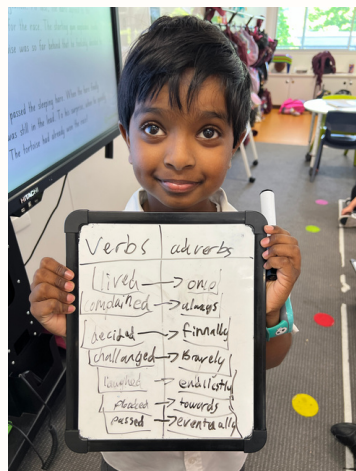




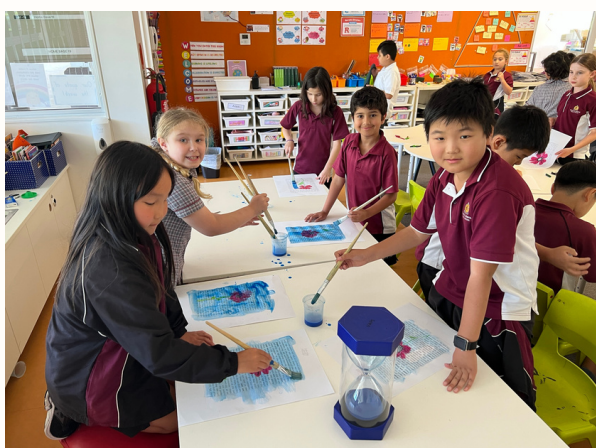
Snapshots of learning from the Kookaburras in Term 4



The Kookaburras have had a wonderful term exploring narrative texts, numeral fluency, the history and meaning behind Remembrance Day and developing our ability to be positive proactive team players.



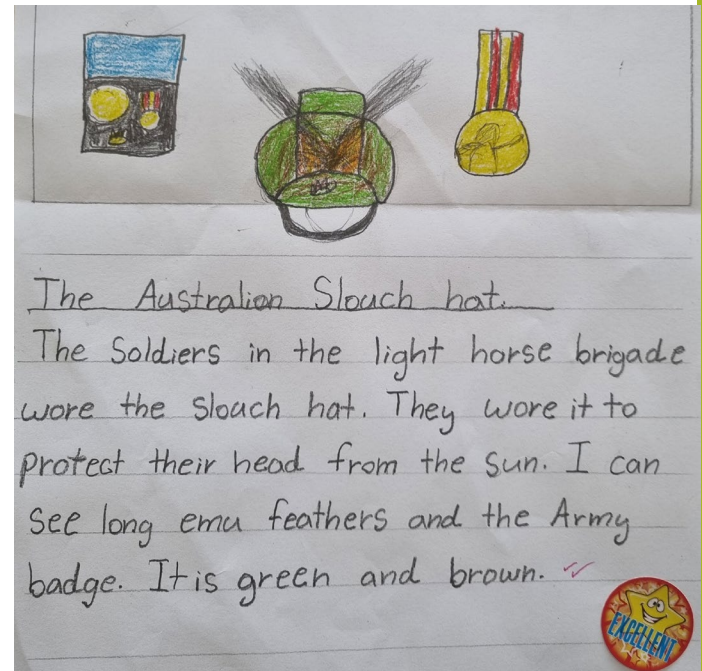
In the lead up to Remembrance Day this term, Stage 2 and 3 were fortunate enough to explore an amazing box of artefacts all the way from the Australian War Memorial in Canberra. Students investigated the artefacts and learnt about how these different items played a part in our nation's history. The Kookaburras researched the different types of uniforms worn by ANZACS throughout history. Students were amazed by the thickness and heaviness of some of the uniforms worn by our soldiers during the first world war. Following our historical research we used visual arts to commemorate our ANZACS.



The Sea Eagles

The Sea Eagles investigated artifacts from the War Memorial box.

We learned about medals, the Army badge and the Australian Army slouch hat.



The Australian Slouch hat.
The Soldiers in the light horse brigade wore the Slouch hat. They wore it to protect their head from the sun. I can see long emu feathers and the Army badge. It is green and brown. ✓



PROGRAMS



**LOWER
PRIMARY**
(5-7 years)









**UPPER
PRIMARY**
(8-11 years)



SECONDARY
(High school
students)

Sessions include:

-  Fun interactive activities that teach about animal care.
-  Behind-the-scenes tour of our shelter.
-  Help our Animal Carers with their daily responsibilities.
-  Meeting a variety of shelter animals.
-  Learn how to be an animal advocate in your community.
-  Learn about animal career pathways



Sydney Adoption and Education Centre
201 Rookwood Road, Yagoona NSW 2199

SCAN ME



RSPCA NSW Education Team

☎ 02 9782 4478 ✉ education@rspcansw.org.au
🌐 <https://events.humanitix.com/host/rspca-nsw>

RSPCA 
New South Wales