



VICTORIA AVENUE PUBLIC SCHOOL

Include • Inspire • Innovate

SCHOOL NEWSLETTER • 1 DECEMBER 2023 • TERM 4 WEEK 8

IMPORTANT DATES

TERM 4

Week 9

Tuesday 5 December

Year 6 Farwell

Wednesday 6 December

Excellence Assembly

Thursday 7 December

Kindergarten 2024 Interviews

Friday 8 December

Kindergarten 2024 Interviews

Week 10

Tuesday 12 December

Talent Quest

Wednesday 13 December

Year 6 Fun Day

Thursday 14 December

Celebration of Learning Day

Friday 15 December

Students' Last Day

2:15pm Year 6 Graduation Assembly

Where did 2023 go? It seems only weeks ago we were welcoming our 2023 Kindergarten students into the school. They have developed their confidence and skills and are now ready for Year 1. What amazing growth they have made this year. Our Year 6 students have demonstrated maturity and resilience and are now counting down the days until they pass through the student farewell tunnel. I know there will be tears from teachers and students on that afternoon... and perhaps a few parents as well, as they move into the next stage of their lives.

2023 Excellence Assembly

Our 2023 Excellence Assembly is being held on Wednesday 6 December, commencing at 9:30am. All students K-6 are to wear full school Summer uniform.

Year 6 Graduation Assembly

We invite our Year 6 parents to our Graduation Ceremony on Friday 15 December at 2:15pm, followed by the farewell school tunnel at 2:45pm.

Celebration of Learning

This term marks the end of another productive year. To celebrate many wonderful achievements, students will be participating in Celebration of Learning activities on Thursday 14 December. These activities will be of no cost to families.

School Spectacular

5,200 public school students across NSW took to the stage to celebrate 40 'FabuloUS' years of Schools Spectacular. Congratulations to our students, Miss Hatzi and parents involved. We are beyond thrilled to be celebrating with our students from our Dance Troupe. Their creativity and commitment to this incredible arena event is outstanding. A huge thank you to Miss Hatzi for her dedication to our students and the School Spectacular. The show will be broadcast on December 9 at 7pm 7 Network.



Last Day for students this term – Friday 15 December.

The Administration Office will be closed from 3:00pm on Friday 15 December and will be open on Tuesday 30 January from 8:30am to 3:00pm.

The office will be CLOSED during the school holidays.

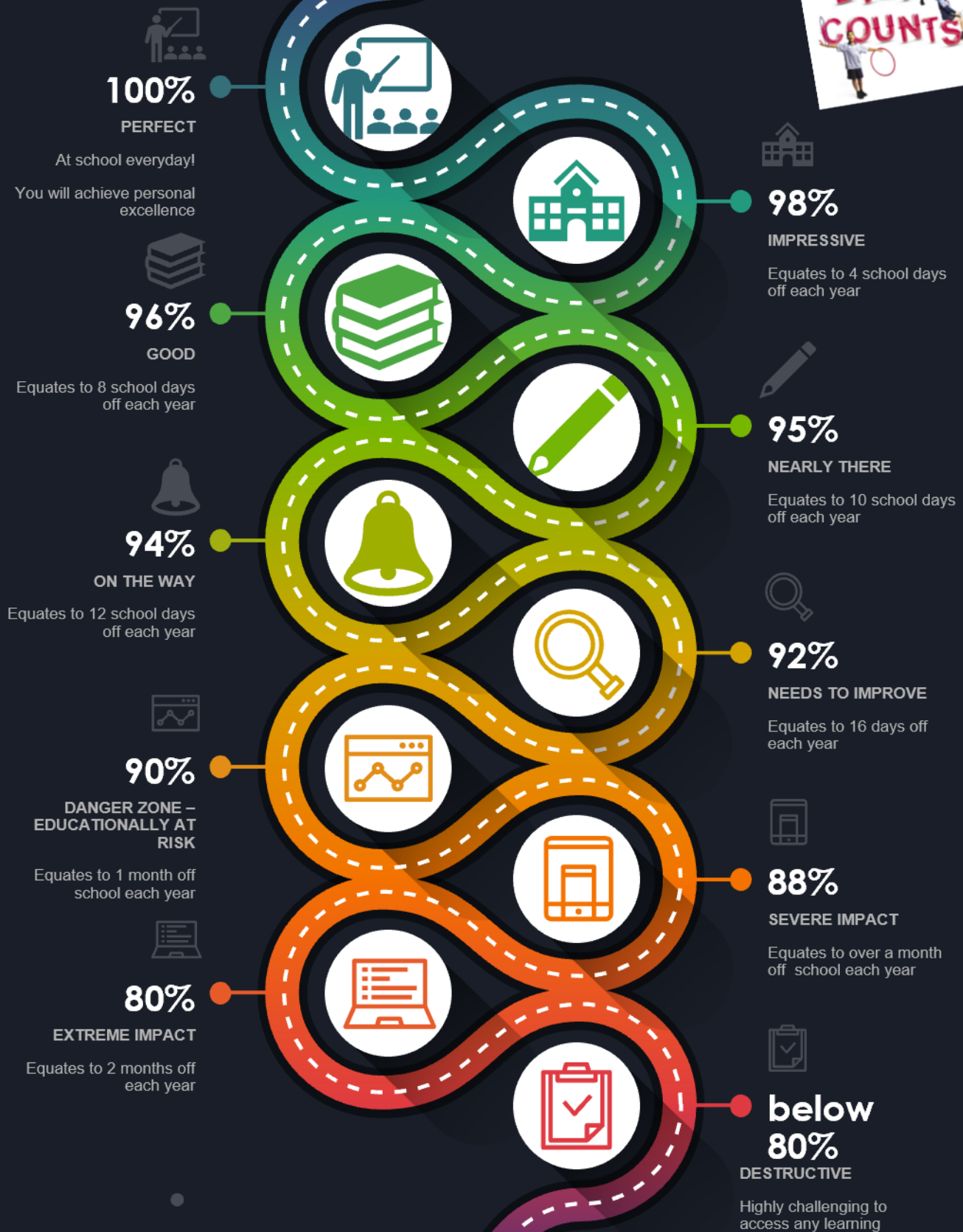
Students in Years 1 - 6 return on Thursday 1 February at 9:00am and Kindergarten students commence on Thursday 1 February at 9:15am.

Students will return to their 2023 classes on the first day of school and 2024 classes will be formed during that week.

Have a wonderful fortnight.

Elisa Baker
Principal

Attendance Road Map



Based on 195 learning days per year

Dropping Off and Picking Up students

A 'Kiss and Ride Zone' or 'Drop-off and Pick-up' area utilises existing 'No Parking' zones around schools. In these areas, drivers may stop to drop off or pick up children, however No Parking rules apply:

- Maximum stop time is 2 minutes
- Driver must remain in or within 3 metres of the vehicle
- Vehicle must not be left unattended

Additional safety tips for school zones:

- Always drop-off or pick-up your child from the designated area, following the school's procedures
- Make sure children use the footpath-side door when getting in and out of a car
- Make sure the hand brake is applied when the vehicle is stationary
- Never double park
- Never park across a pedestrian crossing
- Never undertake a U-turn in close proximity to the school.

Safety Tips for Students:

- Stay buckled up until the vehicle has stopped in the 'Drop-off and Pick-up' area
- Make sure your school bag and other items are in a safe position, e.g. on the floor
- Be ready to get out of the car with your belongings when the car has stopped and you have unbuckled your seatbelt
- Always get in and out of the backseat of the vehicle through the safety door - the rear footpath-side door.

No Stopping



What does it mean? You cannot stop in this area FOR ANY REASON (including queuing or waiting for space).

Why is it there? Keeps clear sight lines between drivers and children/pedestrians.

Penalty \$330 + 2 Demerit Points (School Zone)

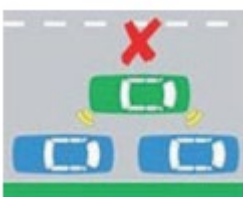
No Parking



What does it mean? You can stop in a NO PARKING zone for a maximum of two minutes to drop off and pick up passengers. If no spaces are available, you cannot queue on the road way or in any other zones while waiting for a space. You will need to drive away and park elsewhere, only returning when there is space to pull up. You must stay within three metres of your vehicle at all times.

Why is it there? To provide a safe place for children/pedestrian set down and pick up.

Double Parking



You must not stop on the road adjacent to another vehicle at any time even to drop off or pick up passengers.

Why is it there? Double parking forces other cars to go around you causing traffic congestion and reduces the view of drivers and children crossing the road.

Penalty \$330 Demerit points (School Zone)

Restorative Practices

Restorative Practices form the relational basis for Quality Teaching and Learning. Our Restorative Practice Framework, because of its explicit nature, offers a common language and practice capable of fostering healthy relationships. Student achievement is enhanced through Restorative values being embedded as a way of being and learning together. Our approach fosters individual responsibility and helps develop empathy. Inappropriate behaviour or choices and mistakes can be viewed as an opportunity for insight, learning and development in both the academic and social domains.

The explicit framework is inextricably linked to the Quality Teaching Framework and includes the following sets of questions to be asked by children, teachers and parents.

When Things Go Wrong.... When Someone Has Been Hurt

- What happened?
- What were you thinking of at the time?
- What have you thought about since?
- Who has been affected by what you have done? In what way?
- What do you think you may do to make things right?
- What did you think when you realised what happened?
- What impact has this incident had on you and others?
- What has been the hardest thing for you?
- What do you think needs to happen to make things right?

The process is empowering as it takes students from the past to the present and gives them hope for the future. It empowers them to make things right and heal any harm that has been done. A restorative classroom setting is one that values dialogue through an inclusive approach where everyone expects to be heard and through this participatory process, students develop the capacity to learn that emotions are an important and legitimate expression of healthy dialogue. This process helps students to deal with conflict, tensions and difference in respectful ways that engender trust and foster healthy relationships.

Our Help Increase the Peace (HIP) Keys

Our school values incorporate the 'Help Increase the Peace Keys' to promote a harmonious, nurturing, and challenging living and learning environment.

The HIP program offers a whole school approach to building relationships through communication, co-operation, trust building and conflict resolution.

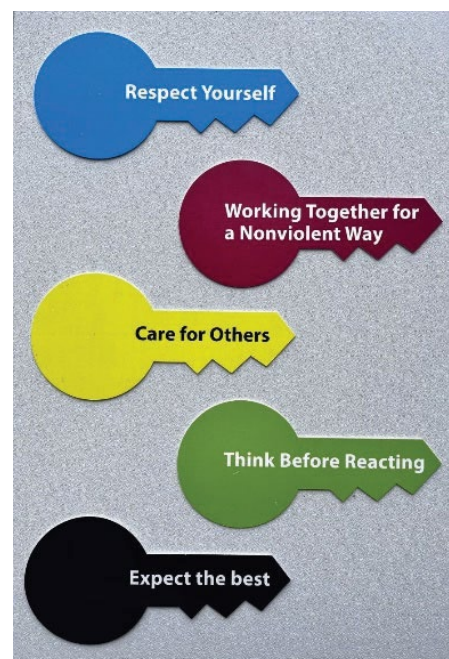
YELLOW KEY Care for Others

GREEN KEY Think Before Reacting

BLUE KEY Respect Yourself

RED KEY Work Together for a Non-Violent Way

BLACK KEY Expect the Best

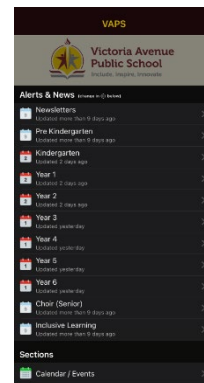


Parent Communication

We use a variety of platforms to communicate information about upcoming events and highlight the great things that happen at Victoria Avenue Public School.

School Enews App

Important notifications are posted and emailed on the School Enews App. School Enews is a free app available for all mobile devices. Just download the app from the App Store or Play Store by searching for Victoria Avenue Public School. Please ensure that push notifications alerts are turned on so that you can receive information as soon as it is distributed.



School Website

Our school website is updated frequently. Our school website is <https://victoriaav-p.schools.nsw.gov.au>



Victoria Avenue Public School

Include, Inspire, Innovate

T: 02 9743 1352

E: victoriaav-p.school@det.nsw.edu.au

[MAKE A PAYMENT](#) [ENROLMENT](#) [NEWS](#) [EVENTS](#) [GALLERY](#)

[About our school](#)

[Supporting our students](#)

[Learning at our school](#)

[Parents and citizens association](#)

[Newsletters, Notes and Sentral](#)

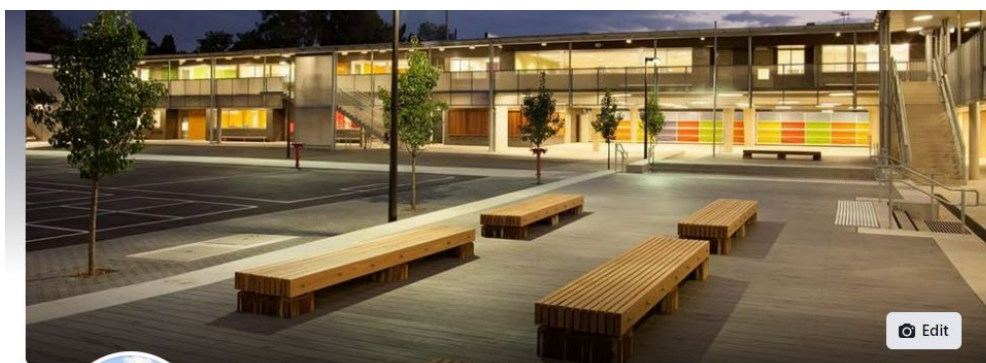
[Extracurricular Activities](#)

[Contact us](#)



Facebook

Victoria Avenue Public School has its own Facebook page where we celebrate student achievements. Parents are unable to post any news items but can comment on reports and photos. The page is designed to keep the community up to date regarding all the wonderful things that happen at Victoria Avenue Public School.



Victoria Avenue Public School

Create @Username · Elementary School

[Edit Send Message](#)

[Home](#) [Services](#) [Photos](#) [Videos](#) [More](#)

[Promote](#)



SHARKS

This term the Sharks have been on different adventures.

Some of our students went to the farm.

And some went to the zoo.



The Sharks have been learning about what living things need and how we can help take care of places.



Students also took a visit to the chicken coop to give our new chickens a pet.



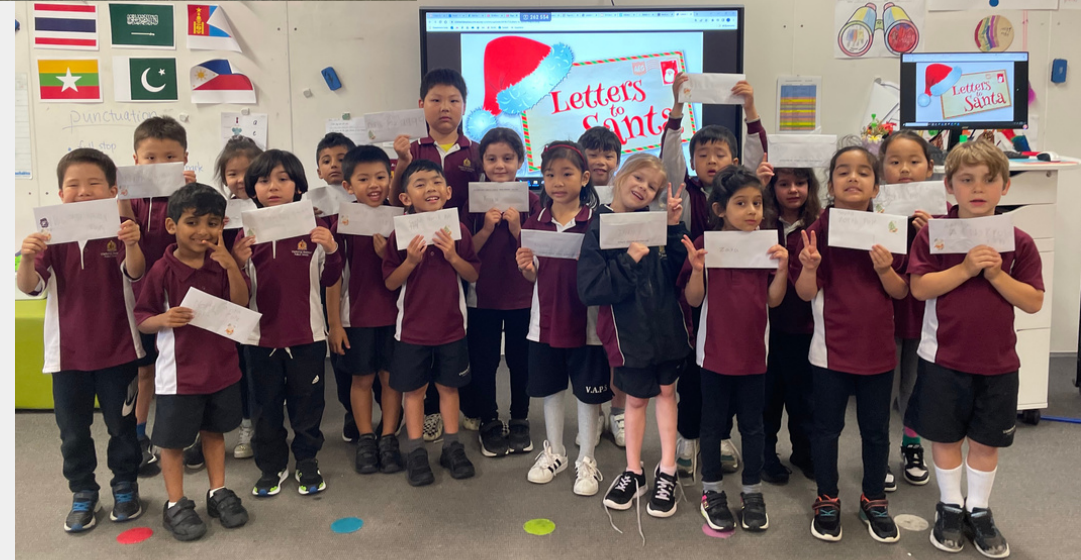
With Christmas just around the corner, Early Stage 1 sent their heartfelt letters all the way to the North Pole to Santa! They learned that people celebrate Christmas in various ways and it can look very different too!



Their hearts were full of excitement as they got busy writing and drawing their dearest wishes with promises of what good, amazing and helpful children they've been this year. They hope that their mail can be delivered safely as they wait in anticipation for Christmas day to 'come!'



Letters
to
Santa



Kangaroo's Maps

THIS WEEK IN MATHS, THE KANGAROOS HAVE BEEN CREATING MAPS OF THE NORTH POLE. THEY ARE THEN USING THEIR KNOWLEDGE OF DIRECTIONS TO WRITE THE LOCATION OF ALL THE PLACES INCLUDED IN THEIR MAPS.



The mountains are to the south of Santa's house. The polar bears are to the east of the Christmas tree. The penguins are to the south of the village. The reindeer stable is to the north of the mountains. Santa's workshop is to the north of the mountains. The polar bears are to the west of the mountains. Santa's house is to the north of the penguins. The Christmas tree is to the east of the penguins.

LUCIA!
LUCIA and Olivia

elf's house is on the right side of the map.
The workshop is on the east side of the map.
The polar bears are on the east of the mountains.
The penguins are on the west side of the map.
The penguins are to the north of the elf's house.

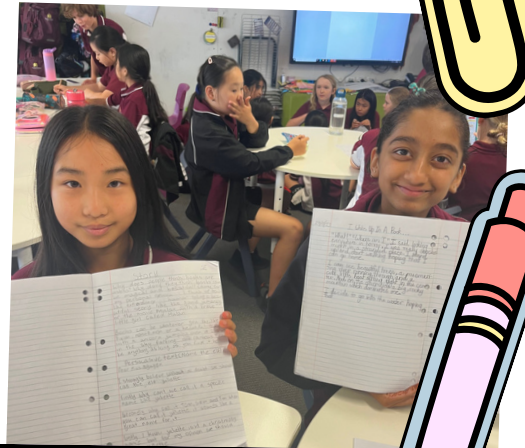
Santa's workshop is north the reindeer stables.
The penguin and polar bears are south to the mountains. The Christmas tree is west to Santa's workshop. Santa's workshop is north to the reindeer stables. The Elf village is north to the Santa's house. Santa's house is south to the reindeer stables. The reindeer stables is west to the polar bears and penguins.



What's Been Happening in the Cockatoos?

English

Students in the Cockatoos have been focusing on writing exciting narratives this term. This week, students have been experimenting with sizzling starts to hook in the reader right from the beginning!



Maths

In maths, students have been learning all about money. They have been looking at finding the right money, calculating change and following a budget. Students even participated in a mathematical investigation where they had to plan a class party following a strict budget.



CAPA

This week in drama, students have been practicing their movement and freeze frame skills. They have also been hard at work preparing for their drama performance at the end of the year. In visual arts, the class have been working on a water colour painting that represents their year as a member of the Cockatoos!

STAGE 3



Students in Stage 3 learnt about respect and teamwork from players from the NRLW West Tigers team.



Stage 3 participated enthusiastically in the Amazing Race where they raced around the school to solve maths problems. Activities were led by students from Concord HS.



Coaches from #1 Draft Pick led students in Basketball coaching clinics.



Weekly Timetable for After School Activities

Term One, 2024 - Victoria Avenue Public School



Tuesday	Activity	Enrolment details and contact information	
8.00am to 8.50am	Chess (Dragonflies room)	Enrol: https://sydneyacademyofchess.com.au/payment	Phone: 02 9745 1170 Class code: AFFZNM4DZV
3:00pm to 4:00pm	Art Sparks Discovering Art (Years 3 – 6) (Butterflies room)	Enrol: https://solidairdesigns.com/art-sparks	Phone: 0405 948 670
3.10pm to 4.10pm	Sports X – PTS Multi-Sports (School oval)	Enrol: www.sports-x.com.au Email lireland@sports-x.com.au	Phone: 0412 050 240
3.00pm to 4.15pm	Tennis (offsite - Powells Creek Court)	Enrol: coach@pctennis.com.au	Phone: 02 9743 4845
3.00pm to 6.00pm	Athletic Buddha Fitness (Off-site)	Enrol: kids@athleticbuddha.com Refer to attached brochure for activity timetable	Phone: 0414 488 308
Wednesday	Activity	Enrolment details and contact information	
3.00pm to 4.15pm	Young Engineers Program	Enrol: www.youngengineersAustralia.com.au	Email contact@young-engineers.com.au
3.00pm to 6.00pm	Athletic Buddha Fitness (Off-site)	Enrol: kids@athleticbuddha.com Refer to attached brochure for activity timetable	Phone: 0414 488 308
3.00pm to 4.00pm	Miniroos Football	Waiting to finalise details – more information to be come	
Thursday		Enrolment details and contact information	
3.00pm to 4.00pm	Art Sparks Fun with Art (Kinder – Year 2) (Butterflies room)	Enrol: https://solidairdesigns.com/art-sparks	Phone: 0405 948 670



AFTER SCHOOL FITNESS

2024 TIMETABLE

KID FIT-SQUAD

TIME 3.50PM - 4.20PM
TUESDAY

This class includes activities to focus on kids' core strength, proprioception, gross motor skills and overall physical literacy. The class is designed to accommodate kids of all fitness levels and will assist to develop endurance, stamina, agility, flexibility, co-ordination and balance.

Activities will include:

- *Basic gymnastic skills
- *Handstand drills
- *Basic boxing skills
- *Strength and conditioning
- *Fitness related games to help demonstrate body awareness, strength and cardio fitness and the ability to follow and listen to instructions

INDOOR SOCCER

TIME 4PM - 5PM
WEDNESDAY

Our indoor soccer sessions aim to teach children the fundamentals of soccer in a fun, social, non-competitive environment. Each session will provide children with engaging and enjoyable skills and drills to help expand their co-ordination, balance, body movement and confidence. Children will have the opportunity to learn new ball skills each week and get to play the "Big Game" prior to the session ending.

Activities will include:

- *Age-appropriate games and skills associated with soccer
- *Ball familiarisation
- *Basic ball skills and technique
- *Games to improve reaction speed, passing and fast foot work
- *Activities to foster social interactions such as co-operation, supporting and encouraging each other - Teamwork

DANCE & TUMBLING

TIME 4PM - 4.30PM
WEDNESDAY

This program offers the perfect blend of dance, gymnastics, and tumbling. Our kids sessions are age appropriate and while the program has been designed to promote co-ordination, fitness, and agility, it's done in such an engaging way that the children feel a sense of strong self-confidence and self expression.

Activities will include:

- * Basic tumbling skills
- * Freestyle dance routines
- * Easy to learn yoga poses
- * Karoke and sing-a-longs
- * Breathing and stretching exercises

INTERACTIVE GAMING SESSION

TIME 5.15PM - 6.30PM (OPTIONAL)

Children will have the opportunity to race, dance, crash and compete with their mates to some of the hottest games. Games will include (but not limited to) Minecraft, Super Mario Cart, FIFA 23, Just Dance and many more. Sessions will encourage teamwork, communication and problem solving with friends. Our custom-built air-conditioned gaming theatre contains 6 large flat screened TV screens for some perfect chill-out time. Please advise Management in writing if you do not wish your child to participate.

POWELLS CREEK TENNIS CENTRE

Conway Ave, North Strathfield

Dec/Jan Summer Holiday Tennis Camps

	Half day tennis 9am to 12 noon	Full day tennis 9am to 3pm (drop-off from 8:30am)	After camp supervision 3pm to 6pm
Monday 18 th December			
Tuesday 19 th December			
Wednesday 20 th December			
Thursday 21 st December			
Friday 22 nd December			
Monday 15 th January			
Tuesday 16 th January			
Wednesday 17 th January			
Thursday 18 th January			
Friday 19 th January			
Monday 22 nd January			
Tuesday 23 rd January			
Wednesday 24 th January			
Thursday 25 th January			
Monday 29 th January			
Tuesday 30 th January			

(Tick preferred times)

Half day tennis 9am to 12 noon	\$ 40 inc GST	CHILD NAME:
Full day tennis 9am to 3pm	\$ 72 inc GST	PARENT MOBILE:
2 days	\$ 132 inc GST	PARENT EMAIL:
3 days	\$ 180 inc GST	I WILL PAY THE AMOUNT OF \$ BY: (please circle) Internet banking BSB: 032 275 Account number: 437953 Account name: PC TENNIS PTY LTD Credit card Cardholder name: Credit card number: Expiry date: CVV (last 3 digits on back): Visa / Mastercard (please circle)
4 or more days	\$ 55 per day inc GST	
After camp supervision 3pm to 6pm for FULL DAY participants only <i>In event of a total washout, a decision will be made at 7:30am that morning and credit will be given towards a future tennis camp.</i>	\$ 20 extra per day	

No same day bookings or payments will be taken

Spots are only confirmed when payment is received

Brett.Miners@gmail.com 0439 844 124



Our After School Fitness Program operates on both Tuesdays and Wednesdays during the school term. We have created a program that we believe has sufficient balance of structured and supervised “free” play offering children a fun interactive start to sport and fitness.

Our program caters to all abilities and fitness levels. We love that children can still be active after a full day at school with the flexibility of chilling out if that is their choice.

We offer a variety of fun games and multi-sport activities along with supervised homework and creative arts.

VICTORIA AVENUE PRIMARY SCHOOL

All After School Fitness memberships include:

- Collection from school (Walking Bus)
- Healthy afternoon snack
- Supervised Ninja play
- Ball sports
- Arts and crafts
- Lego building and board games
- Choice to participate in one of our structured fitness/sport/dance/gymnastic/kids yoga and mindfulness sessions
- A qualified and experienced team of Coaches and Educators



WANT MORE INFO?
EMAIL kids@athleticbuddha.com
or PHONE 0414 488 308



sports for better minds

Victoria Avenue Public School



sports x



TERM

1

SCHOOL

programs



In Term 1 2024, Sports X will be running the following after school sports program at Victoria Avenue Public School

PTS Multi Sport - Every Tuesday | 3.10pm- 4.10pm | 8 weeks | \$135 (starting Week 3, February 20th)

Active Kids Vouchers Accepted

Summer Soccer Holiday Clinic Wednesday 17th - Friday 19th January (9am -12pm)

\$50 1 day / \$100 2 days / \$130 3 days

The programs are available to students from Kindy - Year 6.

On arrival children will be split into groups according to age.

All sessions will be run by qualified coaches who hold Working With Children Checks.

The sessions will be fully inclusive & fun-based, catering for all abilities.

Contact Area Manager Liam Ireland : 0412050240/ lireland@sports-x.com.au

For more information and online registrations please visit www.sports-x.com.au Please contact us via email for further enquiries: lireland@sports-x.com.au



Young Engineers Program

www.YoungEngineersAustralia.com.au

All information about the courses is available on the above site



BRICKS CHALLENGE
with LEGO® Technic elements



Bricks Challenge is our most popular enrichment program.

The overall course objective is to impart theoretical and applied knowledge in the fields of Science, Technology, Mechanical Engineering, and Math (STEM) by using LEGO technic parts and other exciting tools.

Session Duration: 75 minutes, suitable for 1st - 6th Grade

* not available in all schools.



ROBO BRICKS
with LEGO® WeDo 2.0



Robo Bricks focuses on exploring the world of Robotics from a professional engineering perspective.

Special emphasis on programming solutions will promote the creation of sophisticated and accurate robots to study the fields of Science, Technology, Mechanical and Software Engineering, and Math (STEM) comprehensively.

Session Duration: 75 minutes, suitable for 3rd - 6th Grade

* not available in all schools.



ROBOTICS



The Robotic and Software Engineering course focuses on exploring the world of robotics from a professional engineering perspective.

Special emphasis on programming solutions promotes the creation of sophisticated and accurate robots.

Session Duration: 90 minutes, suitable for 5th & 6th Grade

* not available in all schools.

www.youngengineersaustralia.com.au | contact@young-engineers.com.au

www.YoungEngineersAustralia.com.au



Pretty
in
Pink
dance

Dance Holiday Program



prettyinpinkdance

what **to EXPECT** in our holiday dance program

Date: Monday 18 to Wednesday 20 December

Ages: 5 to 10 years

Time: 9am to 3pm (drop off available from 8.30am)

Location: Cabarita Conservatory

Cost: \$249.00 per child

Limited spots available, booking available via QR code

- Warm-Ups
- Corner Developmental Work
- Small Dance Routines
- Style Exploration
- Fun Dance Games
- Cool-Dows
- Recess and Lunch Breaks
- Peer Bonding



Booking Link



Follow us here



for more info check out our socials

CONTACT US

prettyinpinkdanceau@gmail.com



PROGRAMS



**LOWER
PRIMARY**
(5-7 years)









**UPPER
PRIMARY**
(8-11 years)



SECONDARY
(High school
students)

Sessions include:

-  Fun interactive activities that teach about animal care.
-  Behind-the-scenes tour of our shelter.
-  Help our Animal Carers with their daily responsibilities.
-  Meeting a variety of shelter animals.
-  Learn how to be an animal advocate in your community.
-  Learn about animal career pathways



Sydney Adoption and Education Centre
201 Rookwood Road, Yagoona NSW 2199

SCAN ME



RSPCA NSW Education Team

📞 02 9782 4478 ✉ education@rspcansw.org.au
🌐 <https://events.humanitix.com/host/rspca-nsw>

RSPCA 
New South Wales

CELEBRATING 20 YEARS



Invites you to

Carols at Halliday Park

McGrath Avenue, Five Dock
Wednesday 13th December,
from 5.00pm

Principle Sponsor



City of
Canada Bay

Community Supporter

CANADABAYCLUB 